

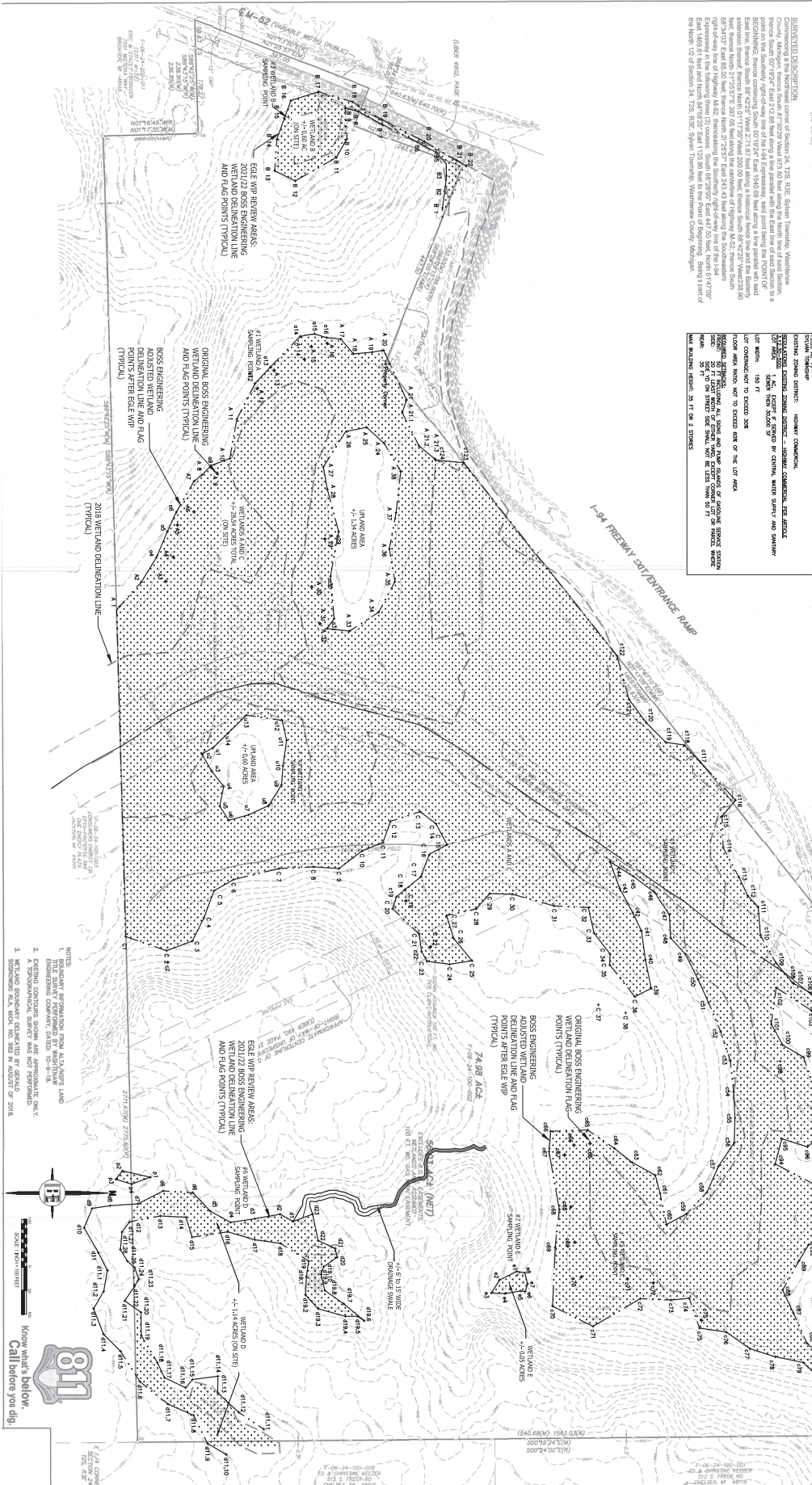


**WETLAND DELINEATION**

A WETLAND DELINEATION WAS CONDUCTED ON 11-17-21, 11-20-21, 11-21-21, AND 12-11-21. AND WAS PERFORMED ON A PORTION OF THE PROPERTY OWNED BY GROUP 10 MANAGEMENT, 2000 NORTH HASTERTOWN HWY., SUITE 400, HOWELL, MI 48843. THIS PROJECT IS A PART OF THE M-52/I-94 SYLVAN TOWNSHIP WETLAND DELINEATION PROJECT. THE WETLAND DELINEATION WAS CONDUCTED IN ACCORDANCE WITH THE NATIONAL SWAMP REGULATORY ACT AND THE FEDERAL REGULATIONS THEREUNDER. THE WETLAND DELINEATION WAS CONDUCTED IN ACCORDANCE WITH THE NATIONAL SWAMP REGULATORY ACT AND THE FEDERAL REGULATIONS THEREUNDER. THE WETLAND DELINEATION WAS CONDUCTED IN ACCORDANCE WITH THE NATIONAL SWAMP REGULATORY ACT AND THE FEDERAL REGULATIONS THEREUNDER. THE WETLAND DELINEATION WAS CONDUCTED IN ACCORDANCE WITH THE NATIONAL SWAMP REGULATORY ACT AND THE FEDERAL REGULATIONS THEREUNDER.

**WETLAND DELINEATION**

THE WETLAND DELINEATION WAS CONDUCTED ON 11-17-21, 11-20-21, 11-21-21, AND 12-11-21. AND WAS PERFORMED ON A PORTION OF THE PROPERTY OWNED BY GROUP 10 MANAGEMENT, 2000 NORTH HASTERTOWN HWY., SUITE 400, HOWELL, MI 48843. THIS PROJECT IS A PART OF THE M-52/I-94 SYLVAN TOWNSHIP WETLAND DELINEATION PROJECT. THE WETLAND DELINEATION WAS CONDUCTED IN ACCORDANCE WITH THE NATIONAL SWAMP REGULATORY ACT AND THE FEDERAL REGULATIONS THEREUNDER. THE WETLAND DELINEATION WAS CONDUCTED IN ACCORDANCE WITH THE NATIONAL SWAMP REGULATORY ACT AND THE FEDERAL REGULATIONS THEREUNDER. THE WETLAND DELINEATION WAS CONDUCTED IN ACCORDANCE WITH THE NATIONAL SWAMP REGULATORY ACT AND THE FEDERAL REGULATIONS THEREUNDER. THE WETLAND DELINEATION WAS CONDUCTED IN ACCORDANCE WITH THE NATIONAL SWAMP REGULATORY ACT AND THE FEDERAL REGULATIONS THEREUNDER.



**WETLAND DELINEATION**

A WETLAND DELINEATION WAS CONDUCTED ON 11-17-21, 11-20-21, 11-21-21, AND 12-11-21. AND WAS PERFORMED ON A PORTION OF THE PROPERTY OWNED BY GROUP 10 MANAGEMENT, 2000 NORTH HASTERTOWN HWY., SUITE 400, HOWELL, MI 48843. THIS PROJECT IS A PART OF THE M-52/I-94 SYLVAN TOWNSHIP WETLAND DELINEATION PROJECT. THE WETLAND DELINEATION WAS CONDUCTED IN ACCORDANCE WITH THE NATIONAL SWAMP REGULATORY ACT AND THE FEDERAL REGULATIONS THEREUNDER. THE WETLAND DELINEATION WAS CONDUCTED IN ACCORDANCE WITH THE NATIONAL SWAMP REGULATORY ACT AND THE FEDERAL REGULATIONS THEREUNDER. THE WETLAND DELINEATION WAS CONDUCTED IN ACCORDANCE WITH THE NATIONAL SWAMP REGULATORY ACT AND THE FEDERAL REGULATIONS THEREUNDER. THE WETLAND DELINEATION WAS CONDUCTED IN ACCORDANCE WITH THE NATIONAL SWAMP REGULATORY ACT AND THE FEDERAL REGULATIONS THEREUNDER.

**WETLAND DELINEATION**

A WETLAND DELINEATION WAS CONDUCTED ON 11-17-21, 11-20-21, 11-21-21, AND 12-11-21. AND WAS PERFORMED ON A PORTION OF THE PROPERTY OWNED BY GROUP 10 MANAGEMENT, 2000 NORTH HASTERTOWN HWY., SUITE 400, HOWELL, MI 48843. THIS PROJECT IS A PART OF THE M-52/I-94 SYLVAN TOWNSHIP WETLAND DELINEATION PROJECT. THE WETLAND DELINEATION WAS CONDUCTED IN ACCORDANCE WITH THE NATIONAL SWAMP REGULATORY ACT AND THE FEDERAL REGULATIONS THEREUNDER. THE WETLAND DELINEATION WAS CONDUCTED IN ACCORDANCE WITH THE NATIONAL SWAMP REGULATORY ACT AND THE FEDERAL REGULATIONS THEREUNDER. THE WETLAND DELINEATION WAS CONDUCTED IN ACCORDANCE WITH THE NATIONAL SWAMP REGULATORY ACT AND THE FEDERAL REGULATIONS THEREUNDER. THE WETLAND DELINEATION WAS CONDUCTED IN ACCORDANCE WITH THE NATIONAL SWAMP REGULATORY ACT AND THE FEDERAL REGULATIONS THEREUNDER.

**WETLAND DELINEATION**

A WETLAND DELINEATION WAS CONDUCTED ON 11-17-21, 11-20-21, 11-21-21, AND 12-11-21. AND WAS PERFORMED ON A PORTION OF THE PROPERTY OWNED BY GROUP 10 MANAGEMENT, 2000 NORTH HASTERTOWN HWY., SUITE 400, HOWELL, MI 48843. THIS PROJECT IS A PART OF THE M-52/I-94 SYLVAN TOWNSHIP WETLAND DELINEATION PROJECT. THE WETLAND DELINEATION WAS CONDUCTED IN ACCORDANCE WITH THE NATIONAL SWAMP REGULATORY ACT AND THE FEDERAL REGULATIONS THEREUNDER. THE WETLAND DELINEATION WAS CONDUCTED IN ACCORDANCE WITH THE NATIONAL SWAMP REGULATORY ACT AND THE FEDERAL REGULATIONS THEREUNDER. THE WETLAND DELINEATION WAS CONDUCTED IN ACCORDANCE WITH THE NATIONAL SWAMP REGULATORY ACT AND THE FEDERAL REGULATIONS THEREUNDER. THE WETLAND DELINEATION WAS CONDUCTED IN ACCORDANCE WITH THE NATIONAL SWAMP REGULATORY ACT AND THE FEDERAL REGULATIONS THEREUNDER.

**NOTES**

1. TITLE SHEET PERFORMED BY MASTERS LAND ENGINEERING COMPANY DATED 10-2-18.
2. A TOPOGRAPHICAL SURVEY WAS NOT PERFORMED.
3. WETLAND BOUNDARY DELINEATED BY RESULTS OF 2018.



Call before you dig!  
Know where you dig!

NO.	DATE	REVISION PER	DATE
1	08/28/22	REVISION PER EGLE WIP	
2		REVISION PER	
3		REVISION PER	

**PROJECT** M-52/I-94 SYLVAN TOWNSHIP

**PREPARED FOR** GROUP 10 MANAGEMENT  
2000 NORTH HASTERTOWN HWY., SUITE 400  
HOWELL, MI 48843  
734-667-4273

**TITLE** WETLAND DELINEATION

**BEBOSS Engineering**  
Engineers Surveyors Planners Landscape Architects

3121 E. GRAND RIVER AVE.,  
HOWELL, MI 48843  
517.546.4836 FAX 517.546.1670

**ORIGINAL TOPOGRAPHIC DELINEATION BY OTHERS**

THE LOCATION AND ELEVATION OF EXISTING UNDERGROUND UTILITIES AS SHOWN ON THESE PLANS ARE ONLY APPROXIMATE. THE UTILITIES ENGINEER SHALL BE RESPONSIBLE FOR DETERMINING THE EXACT LOCATION AND ELEVATION OF EXISTING UTILITIES AND FOR PROTECTING THEM FROM DAMAGE DURING CONSTRUCTION. THE ENGINEER SHALL BE RESPONSIBLE FOR DETERMINING THE EXACT LOCATION AND ELEVATION OF EXISTING UTILITIES AND FOR PROTECTING THEM FROM DAMAGE DURING CONSTRUCTION. THE ENGINEER SHALL BE RESPONSIBLE FOR DETERMINING THE EXACT LOCATION AND ELEVATION OF EXISTING UTILITIES AND FOR PROTECTING THEM FROM DAMAGE DURING CONSTRUCTION.