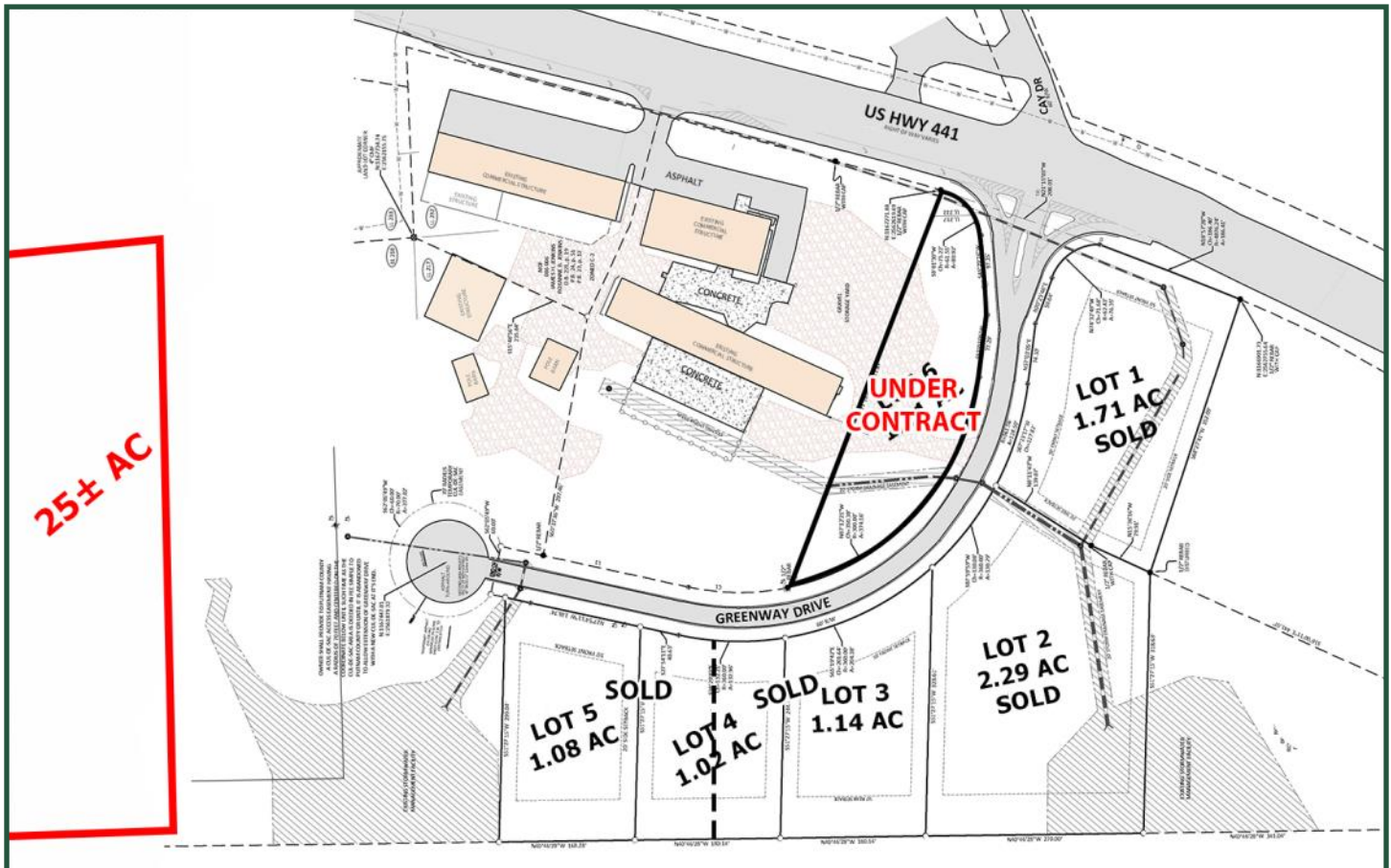


Industrial Lots and Office/Warehouses For Sale
Highway 441 N at Greenway Drive
Milledgeville, GA 31061 (PUTNAM COUNTY)



Lot Size: ±50 AC site with platted lots (conceptual)

Available: 25± Acre Lot - \$20,000/per surveyed AC

Zoning: I-M Industrial (Outdoor storage permitted)

Utilities: Electric serviced by Georgia Power. County Water.

- Notes:**
- Property located in Putnam County, with 1 mile of Lake Sinclair
 - Lot 6 currently **Under Contract**
 - 25± Acres available
 - Paved access
 - Dedicated road to Business and Industrial Park

Contact Agent for Details

**FOR MORE
INFORMATION
CONTACT**

Trip Wilhoit, CCIM, ALC
478-746-9421 (O)
478-960-4080 (C)
trip@fickling.com

Patty Burns, CCIM, ALC
478-746-9421 (O)
478-951-5100 (C)
patty@fickling.com

commercial.fickling.com | georgiacommercialrealestate.net

577 Mulberry St, Suite 1100 * P.O. Box 310 * Macon, GA 31202 | Phone (478) 746-9421 | Fax (478) 742-2015

This information is from resources deemed to be reliable, no warranties or guarantees for accuracy are made by Fickling and Company

Industrial Lots and Office/Warehouses For Sale
Highway 441 N at Greenway Drive
Milledgeville, GA 31061 (PUTNAM COUNTY)



AVAILABLE:

25± Acre Lot- \$20,000/per surveyed AC



**FOR MORE
INFORMATION
CONTACT**

Trip Wilhoit, CCIM, ALC
478-746-9421 (O)
478-960-4080 (C)
trip@fickling.com

Patty Burns, CCIM, ALC
478-746-9421 (O)
478-951-5100 (C)
patty@fickling.com

commercial.fickling.com | georgiacommercialrealestate.net

577 Mulberry St, Suite 1100 * P.O. Box 310 * Macon, GA 31202 | Phone (478) 746-9421 | Fax (478) 742-2015

This information is from resources deemed to be reliable, no warranties or guarantees for accuracy are made by Fickling and Company