

0 Olives Chapel Road, Apex

\$ 17,000,000

75.4330 acres



For Sale

This extremely rare large acreage tract is park-setting stunning. It adjoins US Govt/Jordan Lake lands. Two large ponds and a meandering stream. Public road frontage and exclusive private road takes you to the other end. Close to Hwy 64, 540, Apex, RTP. Easy commute to RDU. Ideal for future investment for when sewer eventually arrives, or equestrian, large estate or large acreage subdivision. Soils report available.

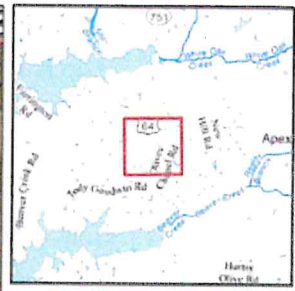
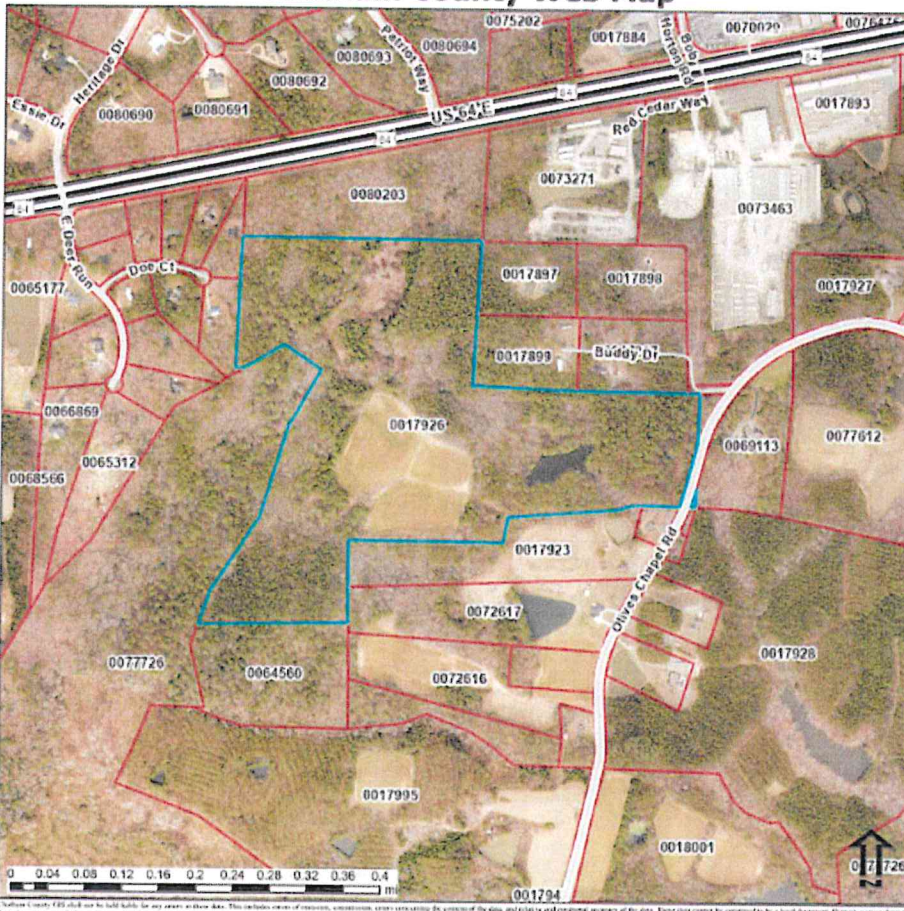


Eric Andrews, ALC
(919) 542-0523
eric@ericandrewsrealtor.com

73 Hillsboro Street (P.O. Box 1400)
Pittsboro, NC 27312
Txt (919) 548-1014

REALTY WORLD CAROLINA PROPERTIES
Carolina Properties is a member of Realty World

Chatham County Web Map



RoadCenterlines_9K
Road Class

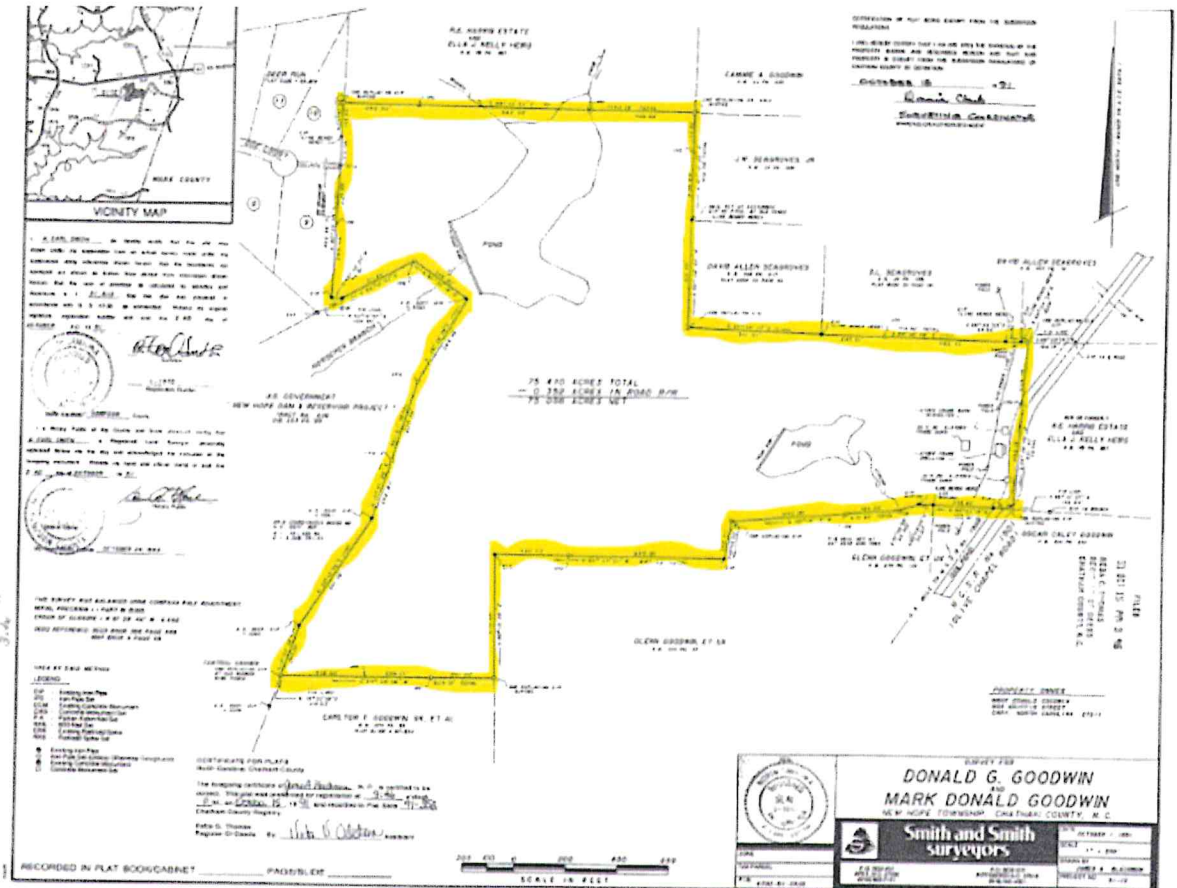
- Highway
- Major Arterial
- Minor Arterial
- Collector
- Parcels

Service Layer Credits: 2023
 Aerial Photos: Chatham County
 Chatham County Tax Department
 Road Labels: Esri, Inc., City of Naperville, Illinois
 Land Reference:



Date: 1/23/2025 Time: 11:15 AM

Chatham County GIS data may not be suitable for any other use than this. This includes, but is not limited to, navigation, construction, or other applications. These data were compiled from a variety of sources and are not guaranteed to be accurate. These data cannot be construed to be a legal document. Please contact the GIS Department for more information.



91-365