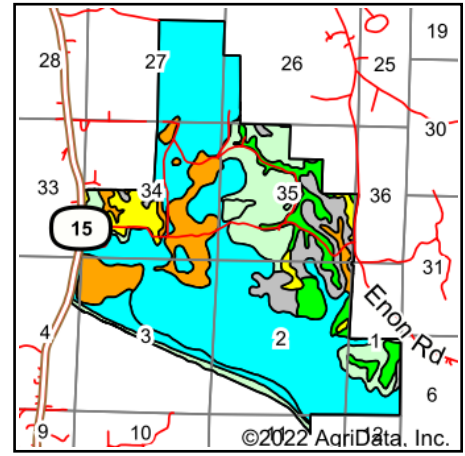
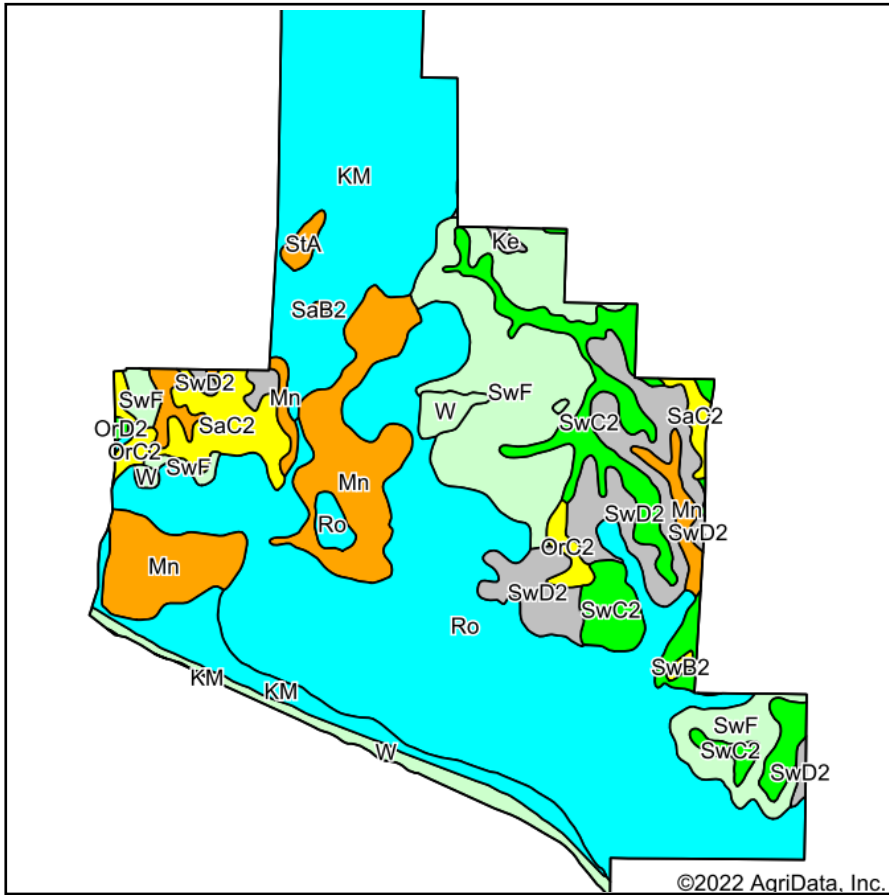


Soils Map



State: **Mississippi**
 County: **Winston**
 Location: **2-13N-12E**
 Township: **District 2**
 Acres: **2495.89**
 Date: **5/26/2022**



Soils data provided by USDA and NRCS.

Area Symbol: MS159, Soil Area Version: 19

Code	Soil Description	Acres	Percent of field	Non-Irr Class Legend	Non-Irr Class *c	Irr Class *c	Bahiagrass AUM	Common bermudagrass AUM	Corn Bu	Cotton lint Lbs	Improved bermudagrass AUM	Soybeans Bu	Tall fescue AUM	Warm season grasses AUM	Wheat Bu
Ro	Rosebloom silt loam, frequently flooded	904.11	36.2%		Vw							7	7		
KM	Kinston, Mantachie, and Mooreville soils, frequently flooded	482.22	19.3%		Vw		8						8		
SwF	Sweatman fine sandy loam, 15 to 35 percent slopes	318.68	12.8%		Vllc	Vllc	4	3.5							
Mn	Mantachie loam, 0 to 2 percent slopes, occasionally flooded	240.69	9.6%		Ilw		10		90	650		35	10	9	
SwC2	Sweatman fine sandy loam, 5 to 8 percent slopes, moderately eroded	173.14	6.9%		IVe	IVe	5.8	3.8							
SwD2	Sweatman fine sandy loam, 8 to 15 percent slopes, moderately eroded	167.28	6.7%		Vle	Vle	5	3.5	50	400		20			



SaC2	Savannah fine sandy loam, 5 to 8 percent slopes, moderately eroded	73.84	3.0%		Ille	Ille	9		75	650		8.5		35	8		
W	Water	68.67	2.8%														
OrC2	Ora fine sandy loam, 5 to 8 percent slopes, eroded	26.46	1.1%		Ille	Ille	8.5		8	70	600		7.9		30	7.5	
SaB2	Savannah fine sandy loam, 2 to 5 percent slopes, moderately eroded	15.67	0.6%		Ile	Ile	9		75	650		8.5		35	8		
Ke	Kinston loam, 0 to 2 percent slopes, frequently flooded	11.04	0.4%		Vlw	Vlw	10		8	95	700				40	10.5	
StA	Stough loam, 0 to 2 percent slopes	9.25	0.4%		Ilw	Ilw	8		80	725		8		25	8		
SwB2	Sweatman fine sandy loam, 2 to 5 percent slopes, moderately eroded	3.12	0.1%		Ille	Ille	6.3		4.3	48.3	383.3				18.3		
OrD2	Ora fine sandy loam, 8 to 12 percent slopes, eroded	1.72	0.1%		Ive	Ive	8						7		7		
Weighted Average					4.72	1.75	4.3		1.1	16.2	125.4		3		6.6	5.5	0.9

*c: Using Capabilities Class Dominant Condition Aggregation Method
 Soils data provided by USDA and NRCS.