



GREENTREE ROAD SOLAR FARM KINGSLAND

0 GREENTREE ROAD
KINGSLAND, GA 31548

Mike Lansdell, ALC
C: 912.409.0925
mike.lansdell@svn.com

SOLD

Property Summary



OFFERING SUMMARY

Sale Price:	\$600,000
Lot Size:	74.6 Acres
Price / Acre:	\$8,043
Zoning:	AG
APN:	095 009

PROPERTY OVERVIEW

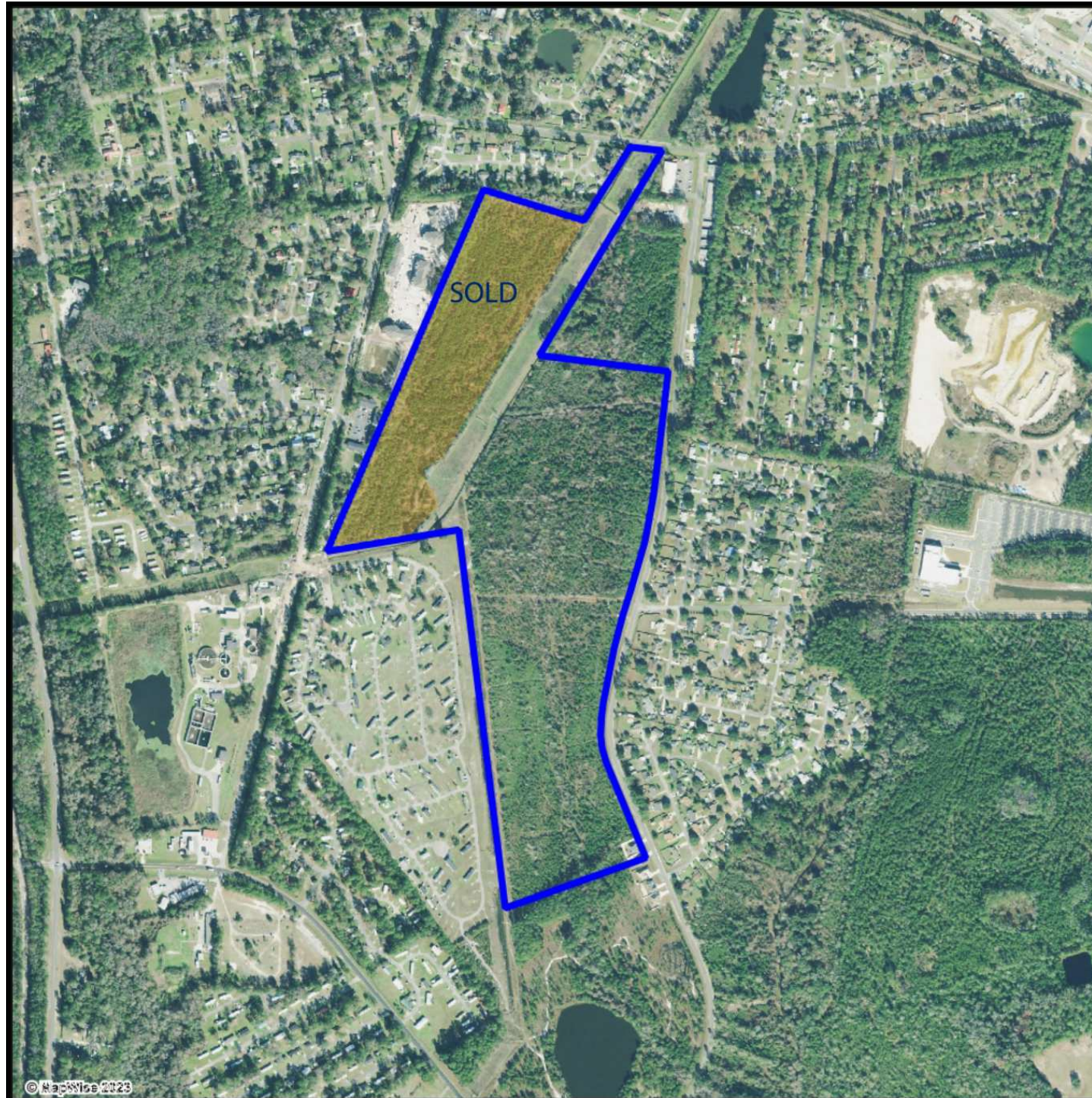
This 74± acre development property is located in Kingsland within Camden County Georgia. It is conveniently located near all necessary amenities, such as multiple shopping centers, a variety of restaurants, and schools. Furthermore, it offers easy access to the I-95 corridor, providing an effortless connection to Jacksonville, Brunswick, and Savannah. There is also a 30-year solar lease included with the sale. The lease generates \$21,406 annually. County water and sewer are available, and the property has paved road frontage. This income-producing property is a land banking opportunity in a growth market area minutes from Kings Bay Naval Base.

PROPERTY HIGHLIGHTS

- Income Producing Property
- Solar Lease with income of \$21,406 annually
- Land Banking Opportunity

Aerial

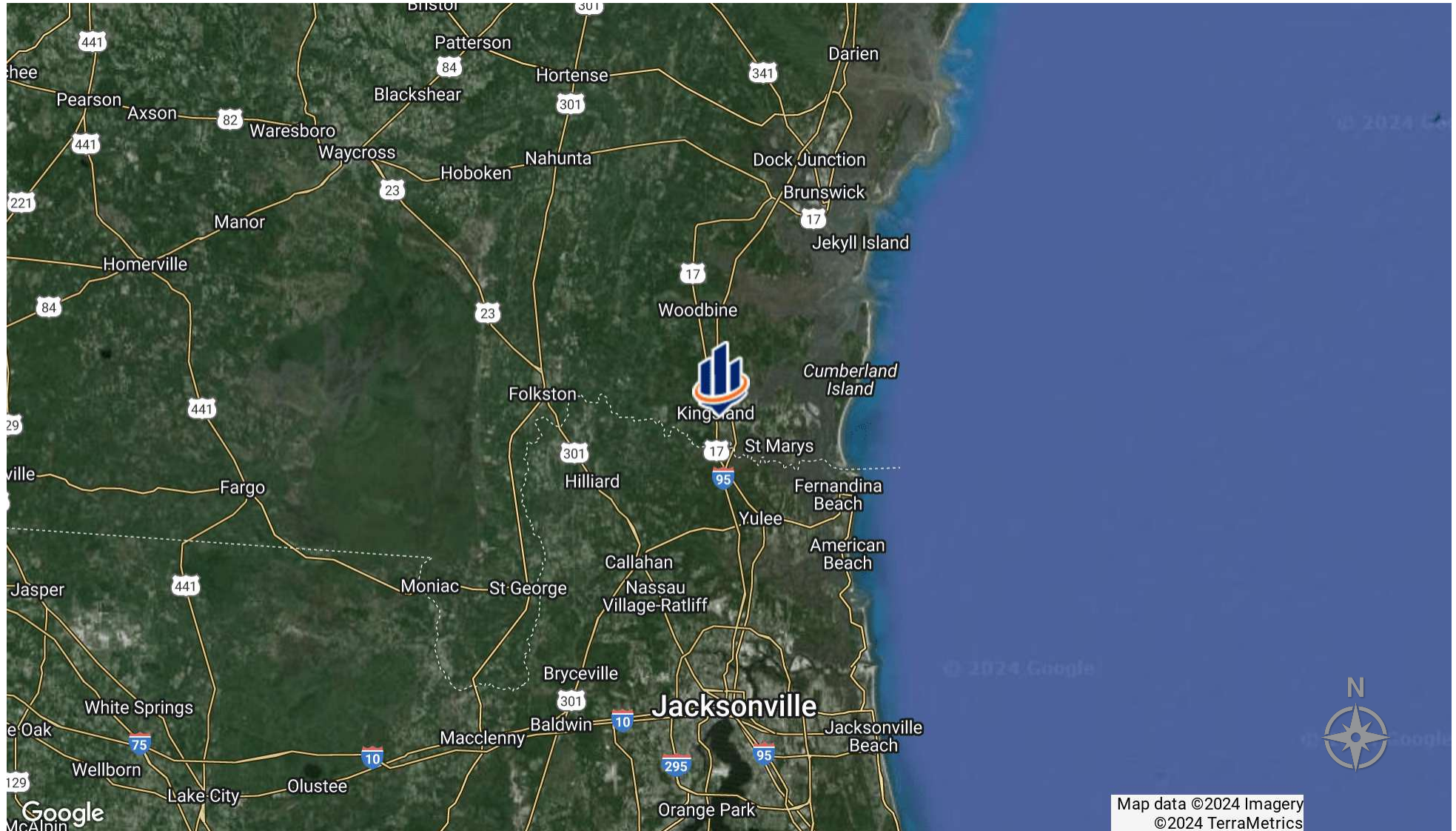
- Polygons Drawing
- Lines Drawing
- Text Labels Drawing
- Points Drawing



© MapNiche 2023

© 2023 SVNIC. SVN | Saunders Ralston Dantzer Real Estate® is a registered trademark licensed to SVN Shared Value Network®. Any information displayed should be verified and is not guaranteed to be accurate by SVN Saunders Ralston Dantzer. You may not copy or use this material without written consent from SVN Saunders Ralston Dantzer.

Location Map

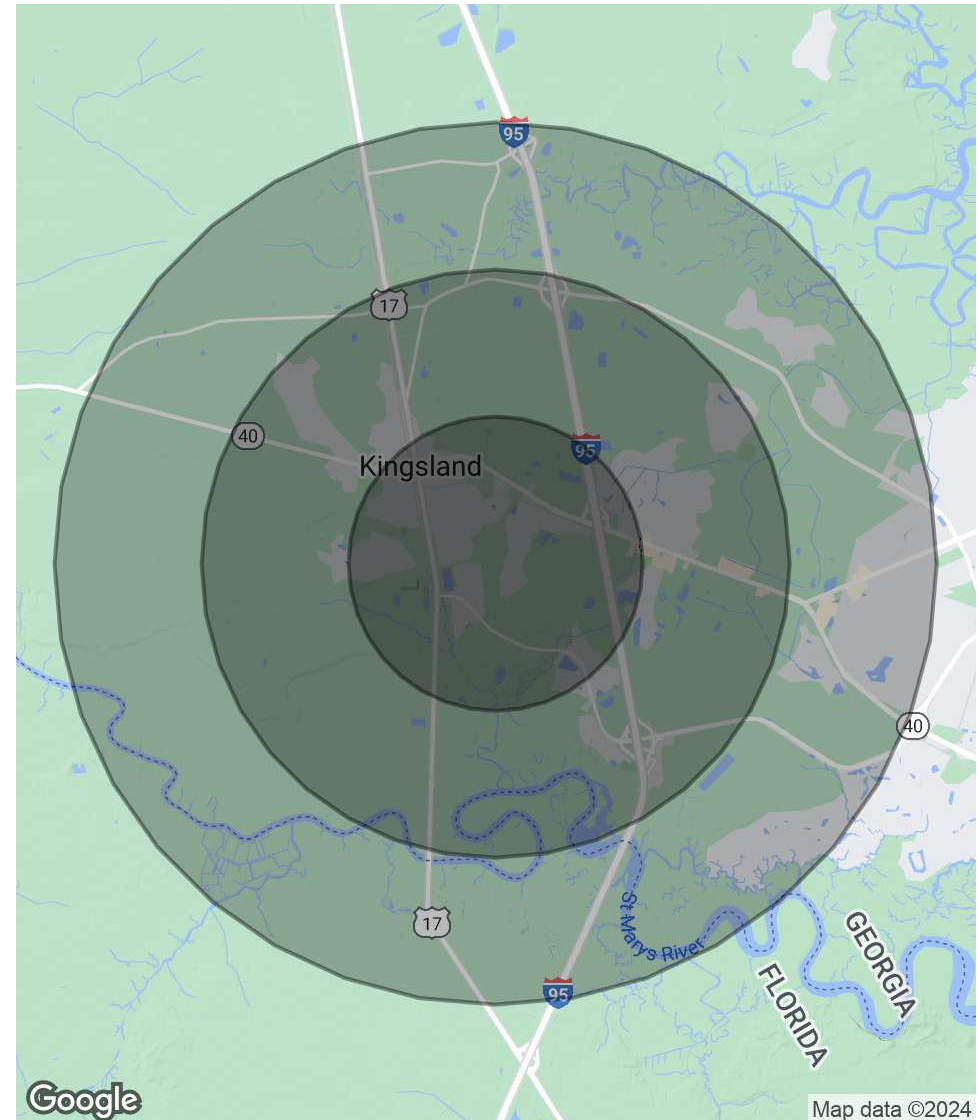


Demographics Map & Report

POPULATION	1.5 MILES	3 MILES	4.5 MILES
Total Population	5,548	14,953	21,045
Average Age	30.7	31.2	33.5
Average Age (Male)	30.2	30.2	32.3
Average Age (Female)	34.3	33.8	36.0

HOUSEHOLDS & INCOME	1.5 MILES	3 MILES	4.5 MILES
Total Households	2,217	5,831	8,413
# of Persons per HH	2.5	2.6	2.5
Average HH Income	\$54,520	\$65,267	\$66,800
Average House Value	\$130,512	\$149,935	\$157,604

2020 American Community Survey (ACS)



Photos





MIKE LANSDELL, ALC

Senior Advisor

mike.lansdell@svn.com

Direct: 877.518.5263 x448 | Cell: 912.409.0925

PROFESSIONAL BACKGROUND

Mike Lansdell, ALC is a Senior Advisor at SVN | Saunders Ralston Dantzler Real Estate in Thomasville, Georgia.

Born and raised on a farm in Southern Georgia, Mike has always held a passion for the land industry. After graduating high school, he would attend Abraham Baldwin Agriculture College and then the University of Georgia where he earned his Bachelor of Science degree in Agriculture.

For six years, Mike sold specialty chemicals for companies like the Helena Chemical Company Forestry Division where he grew knowledgeable on all aspects of forestry herbicides and silviculture. Later in his career, he kickstarted his own land management company that provided a wide range of services including timber management, harvesting, and whole tree chipping. For twelve years, Mike was highly involved in the daily buying, selling, and reforestation of timber tracts throughout the southern United States.

His diverse background, agricultural experience, and vast knowledge in forestry led Mike to acquire his real estate license. In 2017, he earned the ALC designation through the Realtors Land Institute. Mike now specializes in timber and recreational land.

Mike's love of the outdoors combined with his career history, offers clients a knowledgeable and professional buying experience in various land transactions.

SVN | Saunders Ralston Dantzler
203 E Monroe St.
Thomasville, GA 31792



For more information visit SVNsaunders.com

HEADQUARTERS

1723 Bartow Road
Lakeland, Florida 33801
863.648.1528

ORLANDO

605 E Robinson Street, Suite 410
Orlando, Florida 32801
407.516.4300

NORTH FLORIDA

356 NW Lake City Avenue
Lake City, Florida 32055
352.364.0070

GEORGIA

218 W Jackson Street, Suite 203
Thomasville, Georgia 31792
229.299.8600

©2023 SVN | Saunders Ralston Dantzler Real Estate. All SVN® Offices Independently Owned and Operated SVN | Saunders Ralston Dantzler Real Estate is a full-service land and commercial real estate brokerage with over \$4 billion in transactions representing buyers, sellers, investors, institutions, and landowners since 1996. We are recognized nationally as an authority on all types of land, including agriculture, ranch, recreation, residential development, and international properties. Our commercial real estate services include property management, leasing and tenant representation, valuation, business brokerage, and advisory and counseling services for office, retail, industrial, and multifamily properties. Our firm also features an auction company, forestry division, international partnerships, hunting lease management, and extensive expertise in conservation easements. Located in Florida and Georgia, we provide proven leadership and collaborative expertise backed by the strength of the SVN® global platform.

