

Moore Road/Hardy Lane Pasture Lots

Each Lot Contains:

- +300 Feet of Paved Road Frontage
- Great Homesite Locations
- Maintained Pasture
- Creeks and a Pond
- Bring your own Custom Home Builder to create the perfect Mini-Farm Estate

Restrictions:

- All homes must be Stick- Built and +1500 Sq. Feet
- No Mobile Homes, Trailers, or Dog Kennels
- Barndominiums Accepted through approval from Spalding County Planning and Zoning
- Closing is contingent on pending survey approval with the Spalding County Board of Commissioners

Schools:

- Griffin High School ~ 8 Miles
- Cowan Road Middle School ~ 5 Miles
- Cowan Road Elementary School ~ 5 Miles
- Skipstone Academy ~ 6 Miles
- Strong Rock Christian Academy ~ 19 Miles

Lot Size and Price:

- Lot 1: 7.50 Acres - \$187,500 (\$25,000/AC) ~ 1,800 Feet of Road Frontage
- Lot 2: 7.80 Acres - \$156,000 (\$20,000/AC) ~ Double Road Frontage
- Lot 3: 8.16 Acres - \$163,200 (\$20,000/AC) ~ Barn Attached
- Lot 4: 10.73 Acres - \$214,600 (\$20,000/AC)
- Lot 5: 10.95 Acres - \$219,000 (\$20,000/AC)
- Lot 6: 17.03 Acres - \$383,175 (\$22,500/AC) ~ Pond
- Lot 7: 16.35 Acres - \$302,475 (\$18,500/AC)
- Lot 8: 14.89 Acres - \$297,800 (\$20,000/AC) ~ 1,000 Feet of Creek Frontage
- Combined Acreage Lot 6-8: 48.27 Acres - \$892,995 (\$18,500/AC)

All lot sizes are based off Final Approved Plat by the Spalding County Board of Commissioners. Acreage is subject to change. All prices are per final approved surveyed acre. All acreage is based on estimates and will change slightly as the final plat is completed and approved. Discounts are available for multiple lot purchases.

Contact:

Nathan Hunt

(478)-973-4134

wnhunt.timber@gmail.com



Moore Road/Hardy Lane Pasture Lots

Moore Road SD
Spalding County, Georgia, 92 AC +/-



Boundary

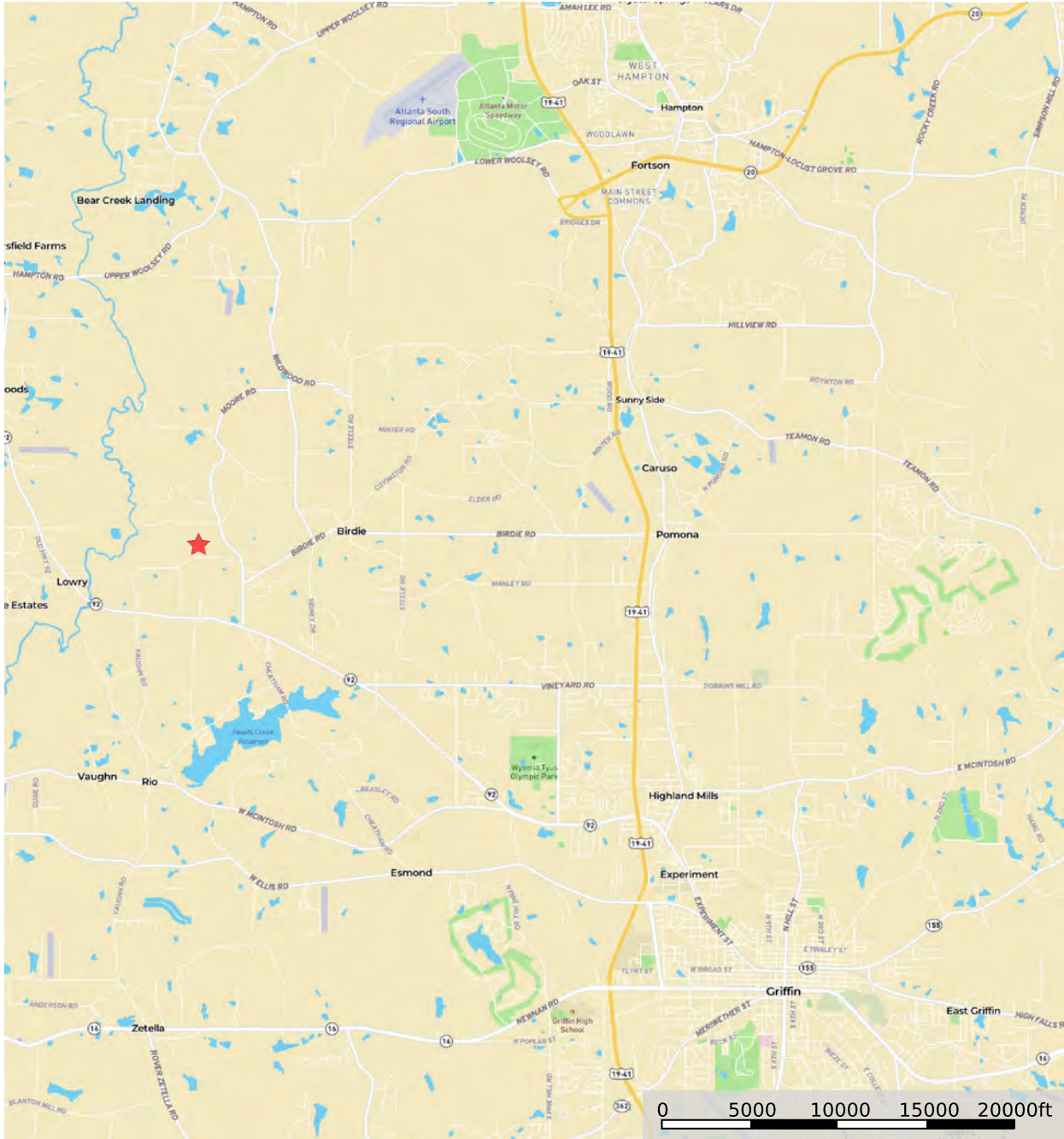
Nathan Hunt
P: (478)-954-1149 todd.timber@gmail.com 404 Church Street Macon, Georgia 31217

The information contained herein was obtained from sources deemed to be reliable. Land id™ Services makes no warranties or guarantees as to the completeness or accuracy thereof.

Location Maps

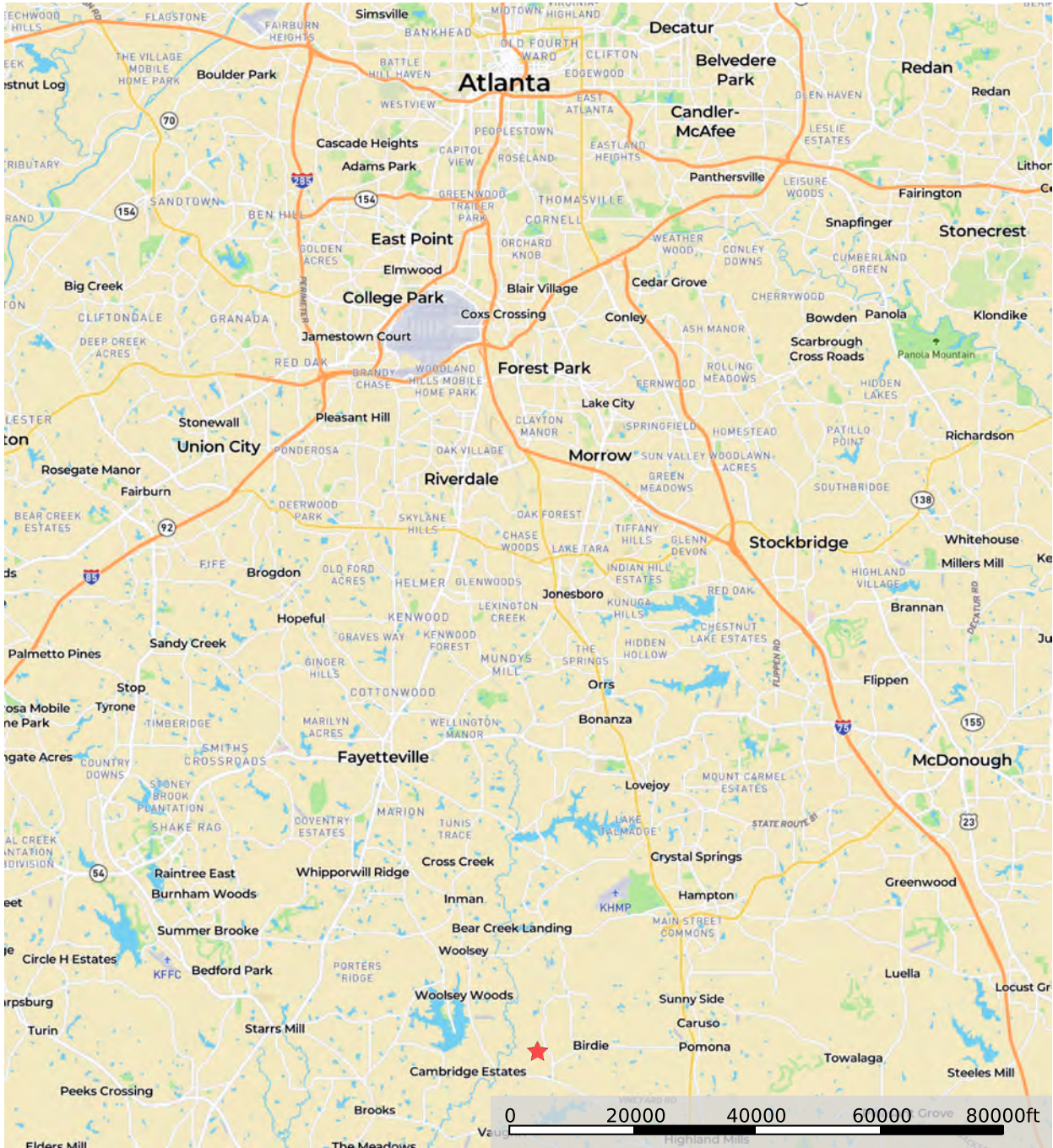
Hardy Lane/Moore Road - Location

Spalding County, Georgia, 93 AC +/-



★ Star

Hardy Lane/Moore Road - Location
 Spalding County, Georgia, 93 AC +/-



★ Star

Nathan Hunt
 P: (478)-954-1149 todd.timber@gmail.com 404 Church Street Macon, Georgia 31217

id. The information contained herein was obtained from sources deemed to be reliable. Land id™ Services makes no warranties or guarantees as to the completeness or accuracy thereof.