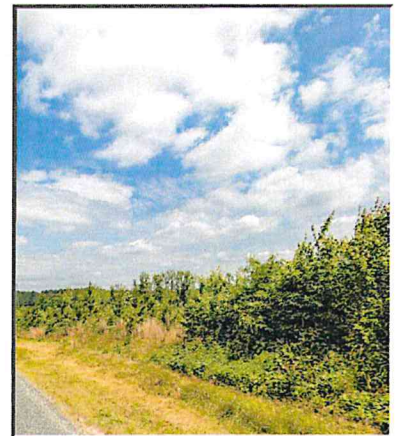


1000 Nesbit Road, Pleasant Garden

\$950,000

52.13 Acres



Ideal for Small Residential Subdivision

This 50 +/- rare large acreage property is ideal for a small subdivision between Greensboro and Randolph Toyota Megasite. Potential for equestrian, small farm or other with rezoning.

- Price: \$950,000
- 52.13 Acres
- Potential for equestrian, small farm
- Close proximity to Toyota Megasite & GBO



Eric Andrews, ALC
(919) 542-0523
eric@ericandrewsrealtor.com

73 Hillsboro Street (P.O. Box 1400)
Pittsboro, NC 27312
919-548-1014 Txt

