

Macon Co., AL

SEE PHOTOS
www.cypruspartners.com

Reference # 530

More info at
334-321-1865
Agent: Lisa Love

Land For Sale
13.01 acres
\$299,230

Exclusive Agent For Owner

CYPRUS
PARTNERS

- Beautiful, wooded lot- less than a mile to Auburn City Limits
- Perfect location to build - near several large, country estates on quiet stretch of Rolling Ridge Rd.
- 707+- feet paved road frontage with good potential for several home sites.
- Deep, 13 acre surveyed lot, slopes gently toward the paved road.
- Excellent location for Game Days - 7 miles to Auburn University's Jordan-Hare Stadium.
- Public water and electricity available.
- Woods are a nice variety of Red Oak, White Oak, Hickory, Blackjack Oak, Pine, Gum, Cherry and other trees.
- About 2 miles to I-85 Exit 50 (Auburn Technology Park/Cox Road) with easy access to Montgomery, AL (45 miles) and Atlanta, GA (100 miles).

All distances, acres & boundary line flagging are estimates and should be independently verified

Driving Instructions

From I-85 Exit 50 at Auburn – (2 miles to the property)

From Exit 50, Auburn Technology Parkway/Cox Road, take Cox Road south for less than 0.5 miles. Take a right on Beehive Road/Lee Road 10 for less than half a mile. Take a left on Rolling Ridge Road/ Lee Road 191 and the property is about 1.5 miles on the left. 32.52466 N, -85.53889 W

You are welcome take a look on your own (download the brochure from the web site to print out the maps and take with you), but please call the agent, Lisa Love, 334-321-1865, first.

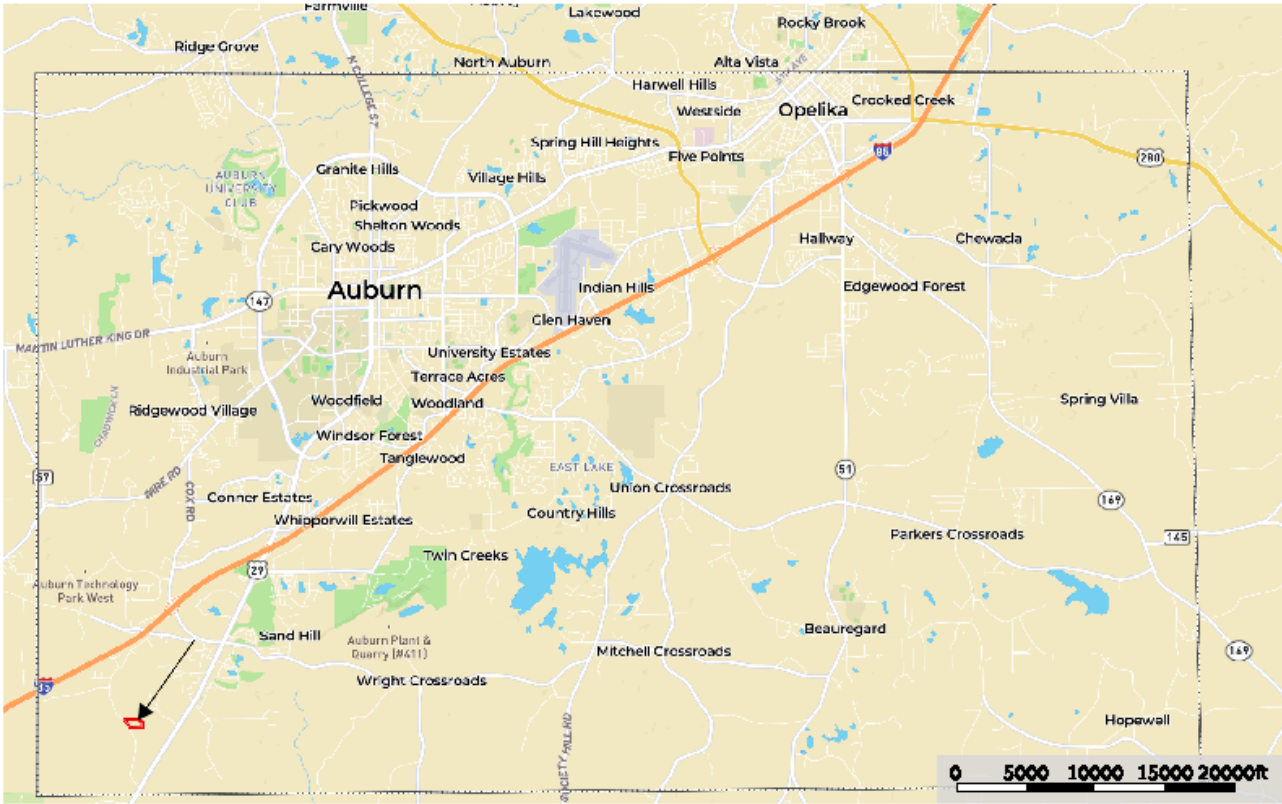
IMPORTANT NOTICE

Investment in rural land carries risk and this offering is made with conditions.

This property is subject to prior sale, price change and withdrawal from the market without notice. Prospective buyers should understand and independently verify risk factors before making a purchase decision. Neither Cyprus Partners and our agents nor the property owner make any representation or warranty as to completeness or accuracy of maps and other information provided here. No representation or warranty is made about this property, express or implied, as to any above-ground or below-ground condition, boundary location, fitness for any particular use, fair market value, access, acres, zoning, mineral ownership, condition of title, or the effects on property use from the actions of any government agency

Location Map

#530 Location Lee County, AL
Alabama, 13.01 AC +/-



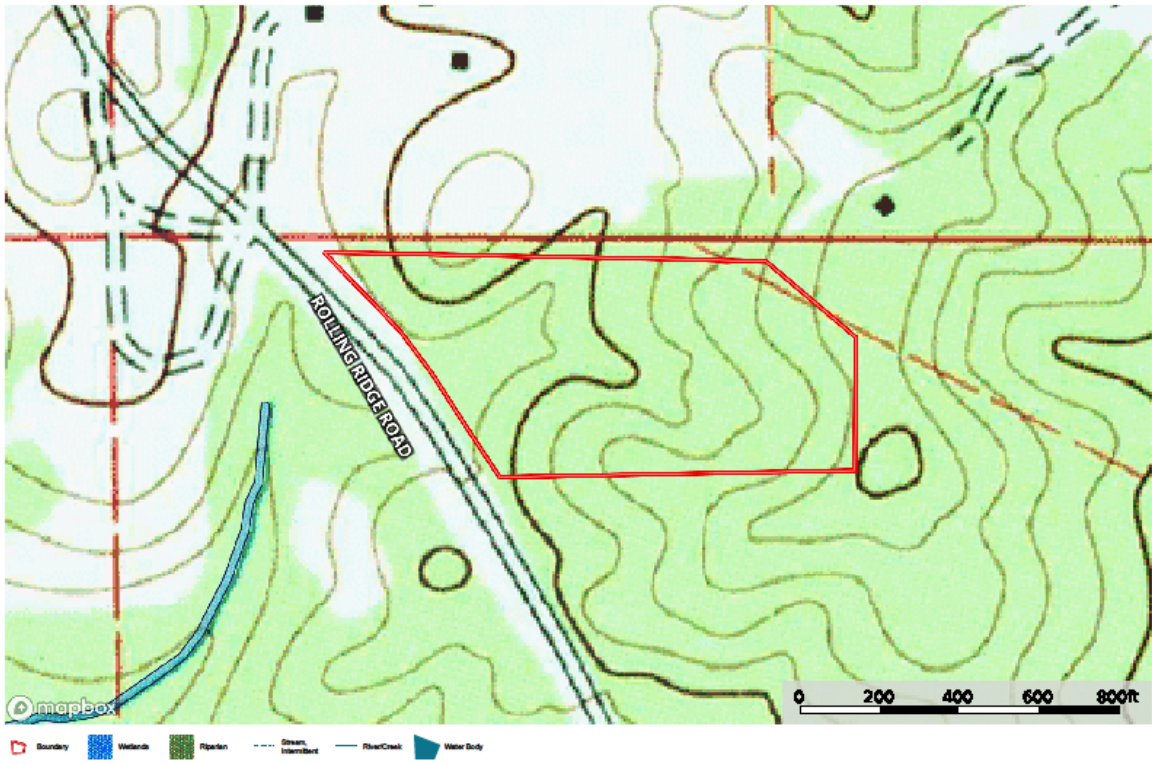
Direction 1 Location Boundary

Melissa Love


icl The information contained herein was obtained from sources deemed to be reliable. Land iCl™ Services makes no warranty or guarantee as to the completeness or accuracy thereof.

Topographic Map

#530 TOPO Lee County, AL
Alabama, 13.01 AC +/-

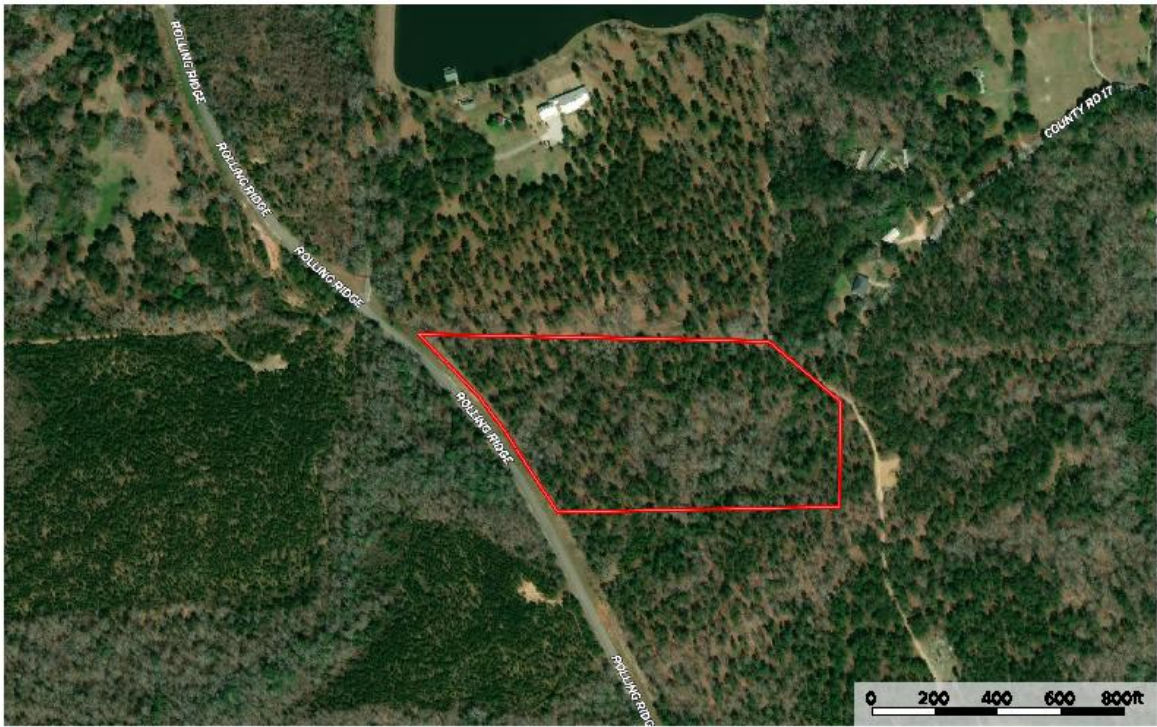


Melissa Love


 The information contained herein was obtained from sources deemed to be reliable. Land ID™ Services makes no warranties or guarantees as to the completeness or accuracy thereof.

Aerial Photo

#530 Lee County, AL
Alabama, 13.01 AC +/-



Melissa Love

 The information contained herein was obtained from sources deemed to be reliable. Land ID™ Services makes no warranties or guarantees as to the completeness or accuracy thereof.