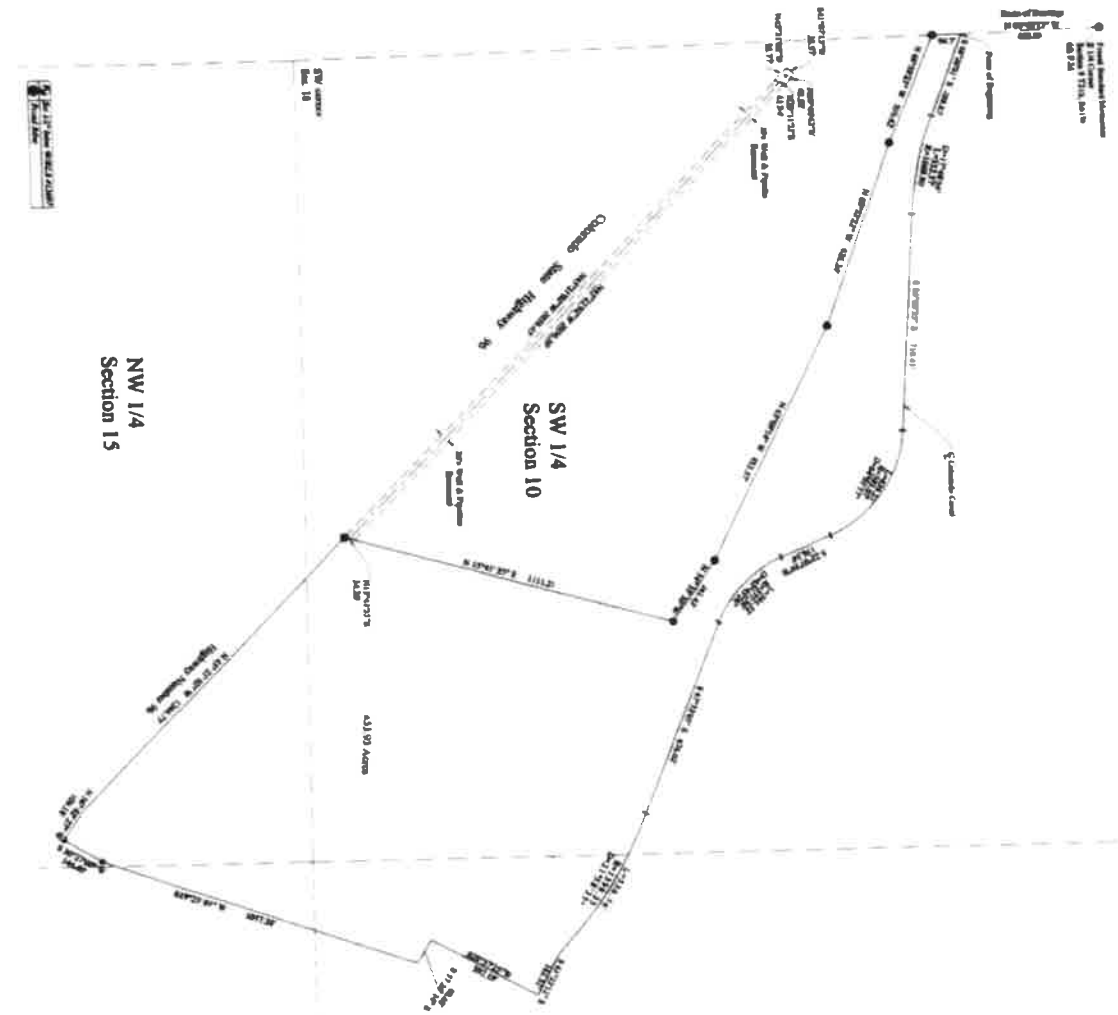


AMENDED Land Survey Plat (Corrected Plat for Reception No. 1768099)

A Portion of the South half of Section 10 and the North half of Section 15, T21S, R61W, 6th P.M.
Pueblo County, Colorado



Legal Description:

Commencing at the SE 1/4 corner of Section 9, T21S, R61W, 6th P.M., thence S 09° 42' 12" E to the center of the Colorado Canal a distance of 633.07 ft. to the True Point of Beginning; thence following the center of the Colorado Canal the following course: (1) course

1. S 68° 20' 41" E, 204.83 ft.
2. S 10° 00' 00" E, 116.61 ft.
3. S 22° 07' 00" W, 176.84 ft.
4. S 22° 07' 00" W, 176.84 ft.
5. S 22° 07' 00" W, 176.84 ft.
6. S 22° 07' 00" W, 176.84 ft.
7. S 22° 07' 00" W, 176.84 ft.
8. S 22° 07' 00" W, 176.84 ft.
9. S 22° 07' 00" W, 176.84 ft.
10. S 22° 07' 00" W, 176.84 ft.
11. S 22° 07' 00" W, 176.84 ft.
12. S 22° 07' 00" W, 176.84 ft.
13. S 22° 07' 00" W, 176.84 ft.
14. S 22° 07' 00" W, 176.84 ft.
15. S 22° 07' 00" W, 176.84 ft.
16. S 22° 07' 00" W, 176.84 ft.
17. S 22° 07' 00" W, 176.84 ft.
18. S 22° 07' 00" W, 176.84 ft.
19. S 22° 07' 00" W, 176.84 ft.
20. S 22° 07' 00" W, 176.84 ft.
21. S 22° 07' 00" W, 176.84 ft.
22. S 22° 07' 00" W, 176.84 ft.
23. S 22° 07' 00" W, 176.84 ft.
24. S 22° 07' 00" W, 176.84 ft.
25. S 22° 07' 00" W, 176.84 ft.
26. S 22° 07' 00" W, 176.84 ft.
27. S 22° 07' 00" W, 176.84 ft.
28. S 22° 07' 00" W, 176.84 ft.
29. S 22° 07' 00" W, 176.84 ft.
30. S 22° 07' 00" W, 176.84 ft.
31. S 22° 07' 00" W, 176.84 ft.
32. S 22° 07' 00" W, 176.84 ft.
33. S 22° 07' 00" W, 176.84 ft.
34. S 22° 07' 00" W, 176.84 ft.
35. S 22° 07' 00" W, 176.84 ft.
36. S 22° 07' 00" W, 176.84 ft.
37. S 22° 07' 00" W, 176.84 ft.
38. S 22° 07' 00" W, 176.84 ft.
39. S 22° 07' 00" W, 176.84 ft.
40. S 22° 07' 00" W, 176.84 ft.
41. S 22° 07' 00" W, 176.84 ft.
42. S 22° 07' 00" W, 176.84 ft.
43. S 22° 07' 00" W, 176.84 ft.
44. S 22° 07' 00" W, 176.84 ft.
45. S 22° 07' 00" W, 176.84 ft.
46. S 22° 07' 00" W, 176.84 ft.
47. S 22° 07' 00" W, 176.84 ft.
48. S 22° 07' 00" W, 176.84 ft.
49. S 22° 07' 00" W, 176.84 ft.
50. S 22° 07' 00" W, 176.84 ft.
51. S 22° 07' 00" W, 176.84 ft.
52. S 22° 07' 00" W, 176.84 ft.
53. S 22° 07' 00" W, 176.84 ft.
54. S 22° 07' 00" W, 176.84 ft.
55. S 22° 07' 00" W, 176.84 ft.
56. S 22° 07' 00" W, 176.84 ft.
57. S 22° 07' 00" W, 176.84 ft.
58. S 22° 07' 00" W, 176.84 ft.
59. S 22° 07' 00" W, 176.84 ft.
60. S 22° 07' 00" W, 176.84 ft.
61. S 22° 07' 00" W, 176.84 ft.
62. S 22° 07' 00" W, 176.84 ft.
63. S 22° 07' 00" W, 176.84 ft.
64. S 22° 07' 00" W, 176.84 ft.
65. S 22° 07' 00" W, 176.84 ft.
66. S 22° 07' 00" W, 176.84 ft.
67. S 22° 07' 00" W, 176.84 ft.
68. S 22° 07' 00" W, 176.84 ft.
69. S 22° 07' 00" W, 176.84 ft.
70. S 22° 07' 00" W, 176.84 ft.
71. S 22° 07' 00" W, 176.84 ft.
72. S 22° 07' 00" W, 176.84 ft.
73. S 22° 07' 00" W, 176.84 ft.
74. S 22° 07' 00" W, 176.84 ft.
75. S 22° 07' 00" W, 176.84 ft.
76. S 22° 07' 00" W, 176.84 ft.
77. S 22° 07' 00" W, 176.84 ft.
78. S 22° 07' 00" W, 176.84 ft.
79. S 22° 07' 00" W, 176.84 ft.
80. S 22° 07' 00" W, 176.84 ft.
81. S 22° 07' 00" W, 176.84 ft.
82. S 22° 07' 00" W, 176.84 ft.
83. S 22° 07' 00" W, 176.84 ft.
84. S 22° 07' 00" W, 176.84 ft.
85. S 22° 07' 00" W, 176.84 ft.
86. S 22° 07' 00" W, 176.84 ft.
87. S 22° 07' 00" W, 176.84 ft.
88. S 22° 07' 00" W, 176.84 ft.
89. S 22° 07' 00" W, 176.84 ft.
90. S 22° 07' 00" W, 176.84 ft.
91. S 22° 07' 00" W, 176.84 ft.
92. S 22° 07' 00" W, 176.84 ft.
93. S 22° 07' 00" W, 176.84 ft.
94. S 22° 07' 00" W, 176.84 ft.
95. S 22° 07' 00" W, 176.84 ft.
96. S 22° 07' 00" W, 176.84 ft.
97. S 22° 07' 00" W, 176.84 ft.
98. S 22° 07' 00" W, 176.84 ft.
99. S 22° 07' 00" W, 176.84 ft.
100. S 22° 07' 00" W, 176.84 ft.

SE 1/4 Section 10



7-17-08

Amelia
SURVEYING
501 N. Main # 10511W
Pueblo, Colorado
(719) 543-1974

Rev. 7/14/00
July 3, 2008-Rev.