

FOR SALE – 5.6 Acres
Bible Camp Road at Highway 49
Fort Valley, GA 31030



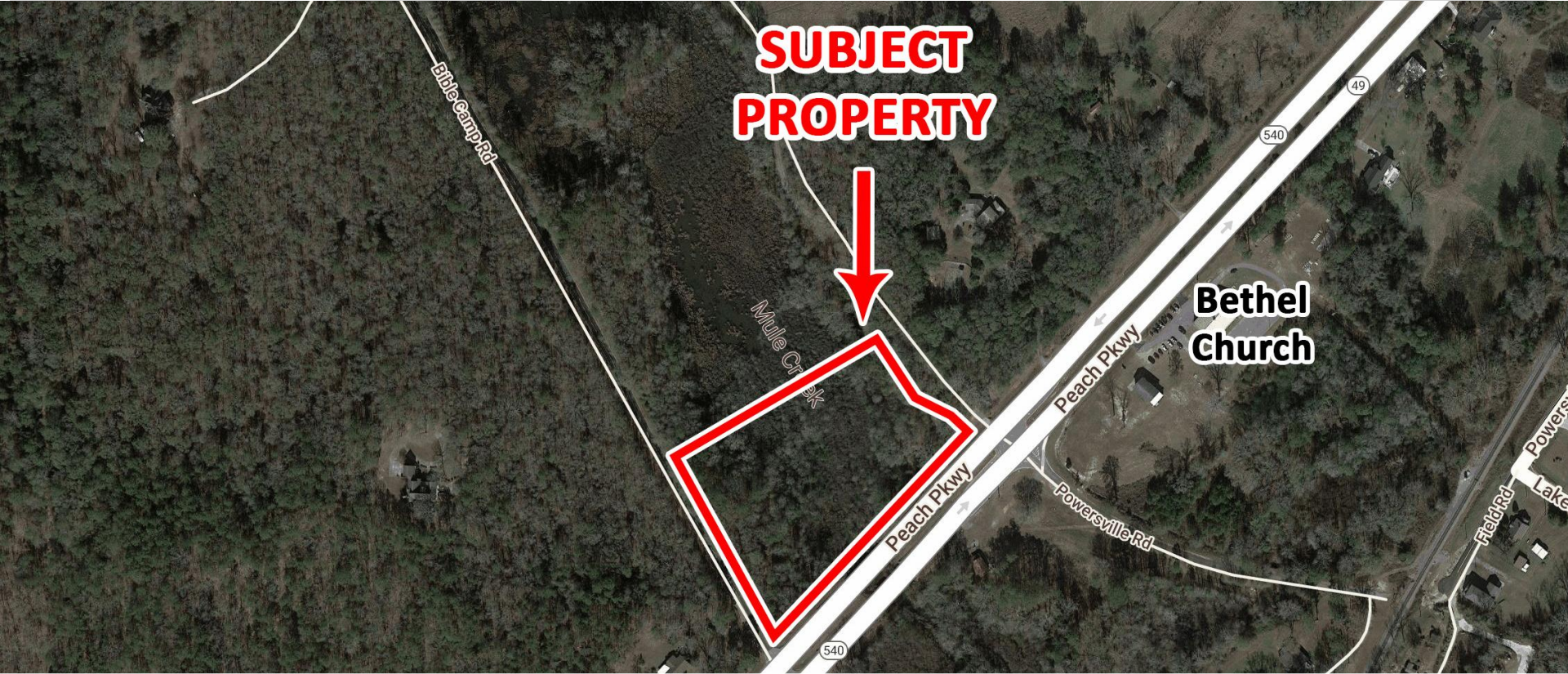
Summary

Area Info

Photos

Aerial

Topo Map



SALE PRICE: \$20,000/AC

CONTACT

Kate Carman
478-919-3878 Cell
478-971-8000 Office
kcarman@fickling.com

Ginny Wyatt, CCIM
Associate Broker
478-397-2233 Cell
478-971-8000 Office
gwyatt@fickling.com

Bill Coley
Associate Broker
478-955-4123 Cell
478-971-8000 Office
bcoley@fickling.com



577 Mulberry St, Suite 1100
Macon, GA 31201
478.746.9421 Office
<https://commercial.fickling.com>

FOR SALE – 5.6 Acres

Bible Camp Road at Highway 49

Fort Valley, GA 31030



Summary

Area Info

Photos

Aerial

Topo Map

PROPERTY INFORMATION

BUILDING

Property Address: Bible Camp Road at Peach Parkway
Fort Valley, GA 31030

County: Peach

Utilities: Ask Agent

Traffic Count: Peach Parkway (Hwy 49) – 31,714

Frontage: 676' on Peach Parkway (Hwy 49)

Depth: 487' on Bible Camp Road

SITE

Site Size: 5.6 Acres

Parcel ID: 043A 005

Zoning: C-1

SALE PRICE: \$20,000/AC

Demographics 2024	1 Mile	3 Miles	5 Miles
Population	295	4,928	13,267
Avg HH Income	\$148,227	\$106,883	\$105,711
Median Age	49.4	44.1	41.2

CONTACT

Kate Carman
478-919-3878 Cell
478-971-8000 Office
kcarman@fickling.com

Ginny Wyatt, CCIM
Associate Broker
478-397-2233 Cell
478-971-8000 Office
gwyatt@fickling.com

Bill Coley
Associate Broker
478-955-4123 Cell
478-971-8000 Office
bcoley@fickling.com



577 Mulberry St, Suite 1100
Macon, GA 31201
478.746.9421 Office
<https://commercial.fickling.com>

FOR SALE – 5.6 Acres

Bible Camp Road at Highway 49

Fort Valley, GA 31030



Summary

Area Info

Photos

Aerial

Topo Map

PROPERTY INFORMATION

NOTES

Property offers 676 ft of frontage and high visibility along Peach Parkway. This property is ideal for various uses, including commercial development, as well as recreational activities such as camping, deer hunting, and duck hunting.

LOCATION

Located in a highly trafficked area on Peach Parkway (Hwy 49). Property is approximately 6 miles from Bryon and 13 miles from Warner Robins. Surrounding neighbors include The Pet Lodge, Rosa Laevigate Venue, Dollar General, Kay Road Elementary School, Atrium Health Navicent Peach, and many more businesses and retailers.



CONTACT

Kate Carman
478-919-3878 Cell
478-971-8000 Office
kcarman@fickling.com

Ginny Wyatt, CCIM
Associate Broker
478-397-2233 Cell
478-971-8000 Office
gwyatt@fickling.com

Bill Coley
Associate Broker
478-955-4123 Cell
478-971-8000 Office
bcoley@fickling.com



577 Mulberry St, Suite 1100
Macon, GA 31201
478.746.9421 Office
<https://commercial.fickling.com>

FOR SALE – 5.6 Acres
Bible Camp Road at Highway 49
Fort Valley, GA 31030



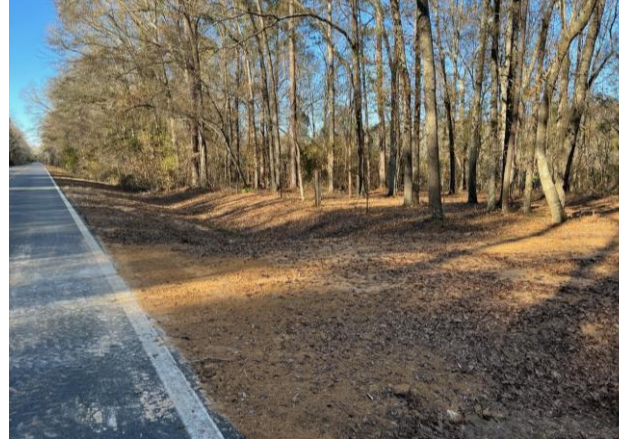
Summary

Area Info

Photos

Aerial

Topo Map



CONTACT

Kate Carman
478-919-3878 Cell
478-971-8000 Office
kcarman@fickling.com

Ginny Wyatt, CCIM
Associate Broker
478-397-2233 Cell
478-971-8000 Office
gwyatt@fickling.com

Bill Coley
Associate Broker
478-955-4123 Cell
478-971-8000 Office
bcoley@fickling.com



577 Mulberry St, Suite 1100
Macon, GA 31201
478.746.9421 Office
<https://commercial.fickling.com>

FOR SALE – 5.6 Acres
Bible Camp Road at Highway 49
Fort Valley, GA 31030



Summary

Area Info

Photos

Aerial

Topo Map

AERIAL



CONTACT

Kate Carman
478-919-3878 Cell
478-971-8000 Office
kcarman@fickling.com

Ginny Wyatt, CCIM
Associate Broker
478-397-2233 Cell
478-971-8000 Office
gwyatt@fickling.com

Bill Coley
Associate Broker
478-955-4123 Cell
478-971-8000 Office
bcoley@fickling.com



577 Mulberry St, Suite 1100
Macon, GA 31201
478.746.9421 Office
<https://commercial.fickling.com>

FOR SALE – 5.6 Acres
Bible Camp Road at Highway 49
Fort Valley, GA 31030



Summary

Area Info

Photos

Aerial

Topo Map

TOPO MAP



CONTACT

Kate Carman
478-919-3878 Cell
478-971-8000 Office
kcarman@fickling.com

Ginny Wyatt, CCIM
Associate Broker
478-397-2233 Cell
478-971-8000 Office
gwyatt@fickling.com

Bill Coley
Associate Broker
478-955-4123 Cell
478-971-8000 Office
bcoley@fickling.com



577 Mulberry St, Suite 1100
Macon, GA 31201
478.746.9421 Office
<https://commercial.fickling.com>