

Southern Land Company TN, LLC

8590/1 Farmington Blvd. Germantown, TN 38139

Office: 901-755-8877 ~ Web: southernlandco.com

Email: land@southernlandco.com

Principal Broker: Bill Gates (901)488-0368

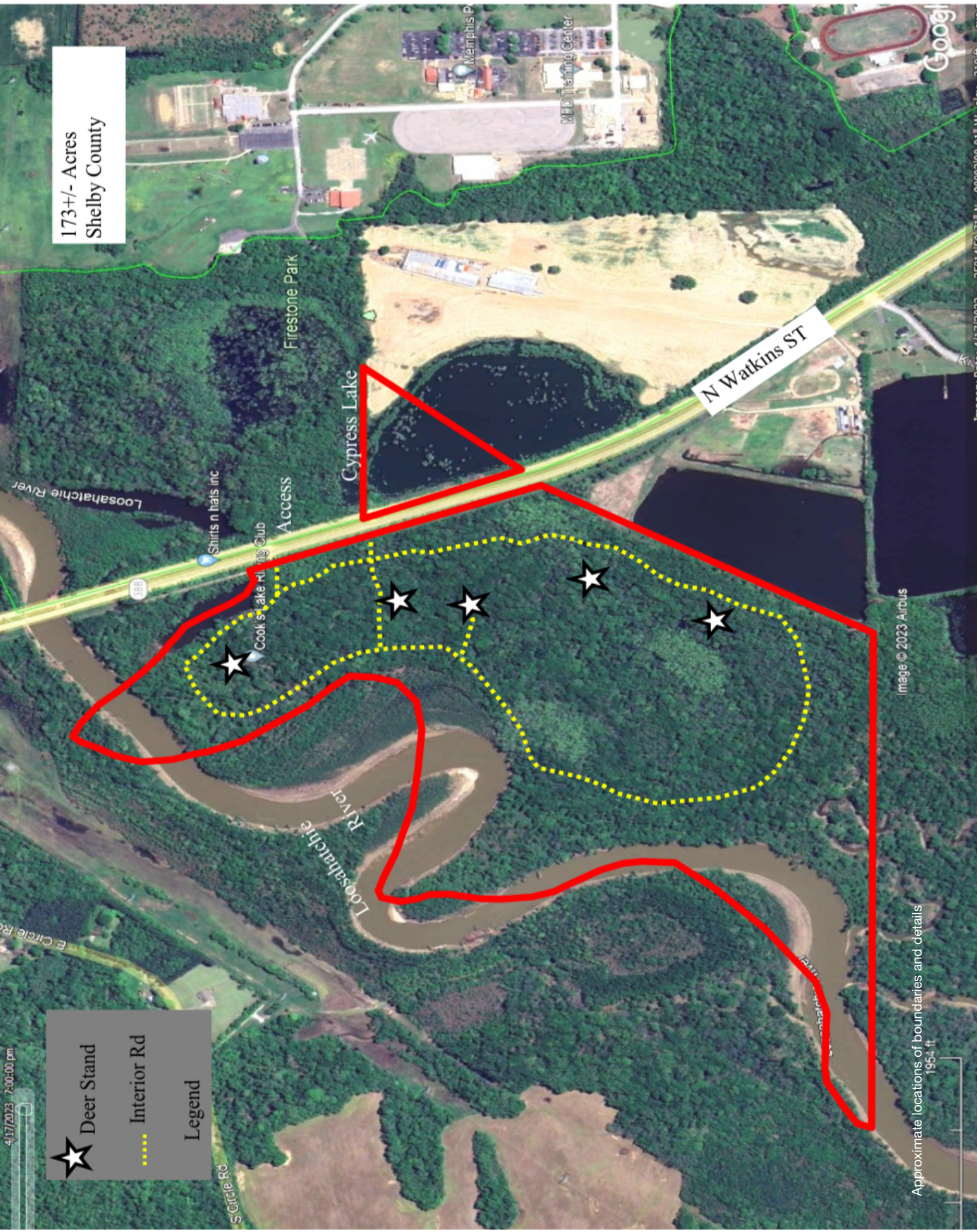
173+/- Acres along Loosahatchie River Shelby County, TN

Discover your own outdoor haven! 173+/- acres of prime bottom land hardwood timber, boasting 2 miles of meandering Loosahatchie River frontage for exceptional deer, turkey, and small game hunting. Dive into the thrill of duck hunting when the river rises. Enjoy well-placed deer stands accessible via interior roads, and a 10-acre cypress tree lake jointly owned for fishing and duck hunting. Surrounded by hundreds of acres of neighboring farm and timberland, near Meeman-Shelby Forest State Park and the mighty Mississippi River. Your ultimate retreat for nature enthusiasts and avid hunters awaits just on the outskirts of Memphis, TN

Shown By Appointment ~ Shane Martin 901-827-0224

Offering Price ~ \$347,750.00





173+/- Acres
Shelby County

Legend

- ★ Deer Stand
- Interior Rd

N Watkins ST

Firestone Park

Cypress Lake

Loosahatchie River

Shirts n hats inc

Cook's Lake Fishing Club

Access

Metaphis P

MFD Training Center

Image © 2023 Airbus

Approximate locations of boundaries and details
1954 ft

4/17/2023 7:00:00 pm

S Circle Rd

E Circle Rd

Loosahatchie River

Google



Deer Stands placed throughout property in areas with proven success





Miles of meandering river banks along Loosahatchie River



Cypress Tree lake jointly owned used for Duck Hunting

