



"Your One Stop Real Estate Shop"

LAND & TIMBER | RESIDENTIAL | COMMERCIAL | OIL & GAS

- * ONLY \$171,000.00
- * 38 acres +/-
- * SW Pike County, MS
- * Location! Timber! Wildlife!

Country Living at it's BEST!!!

Gently Rolling 38 ac +/- Multi-use !!!

- This is your HAPPY PLACE!
- Beautiful rolling hills with Pines and Hardwoods
- Seasonal Creek loaded with mature timber
- Road Frontage & Easy Access from LA
- Great Hunting (Deer & Turkey)
- Address: 5026 Old Mill Rd, Osyka, MS 39657



Gary W. Stewart

MOBILE: 601-757-3009

gwstewart@4cornerprop.com

Office: 601-952-2828

Fax: 601-510-9446

www.4cplandandhomes.com



Priced to sell

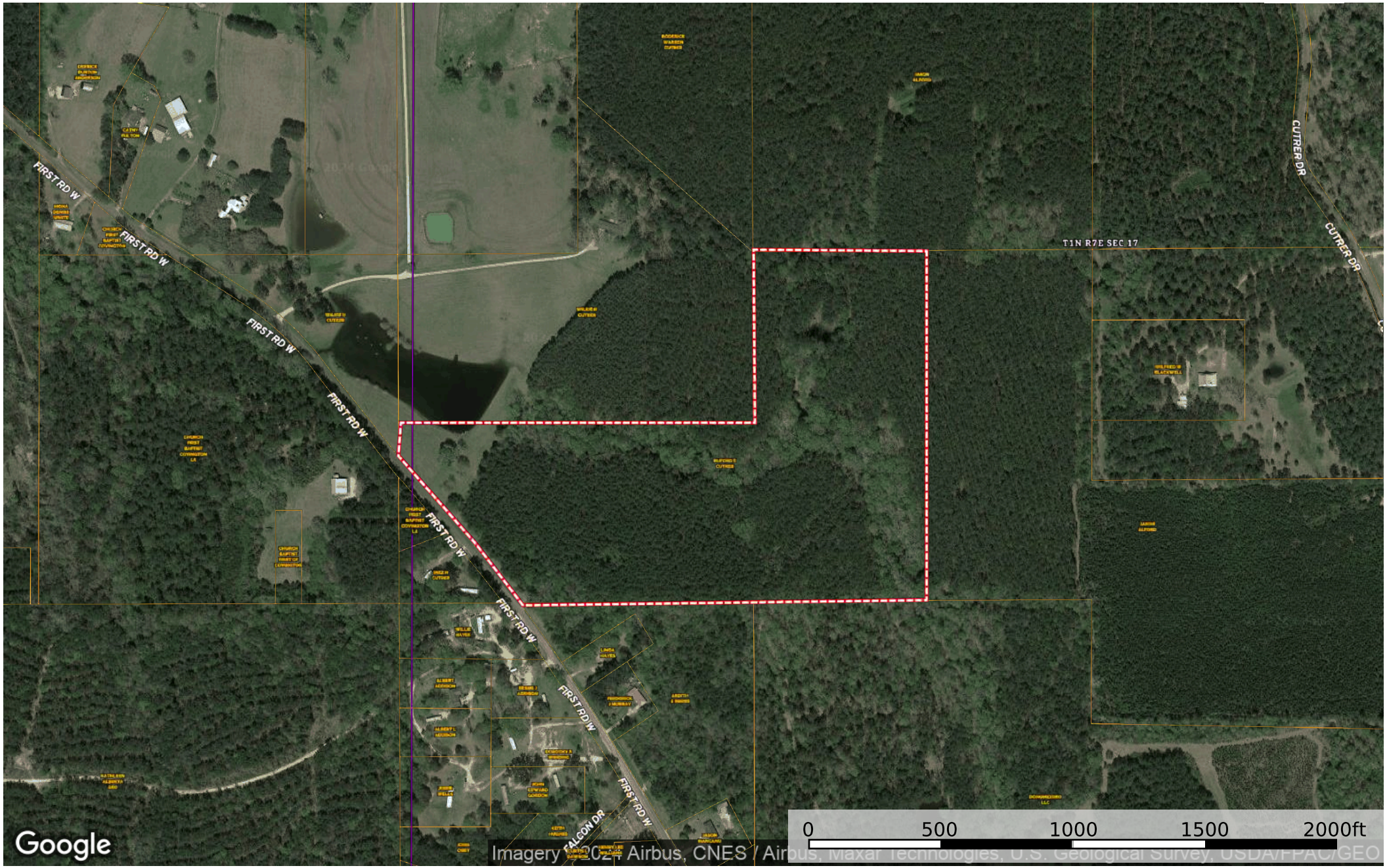
- Incredible Location
- Must See




Excellent Home Sites

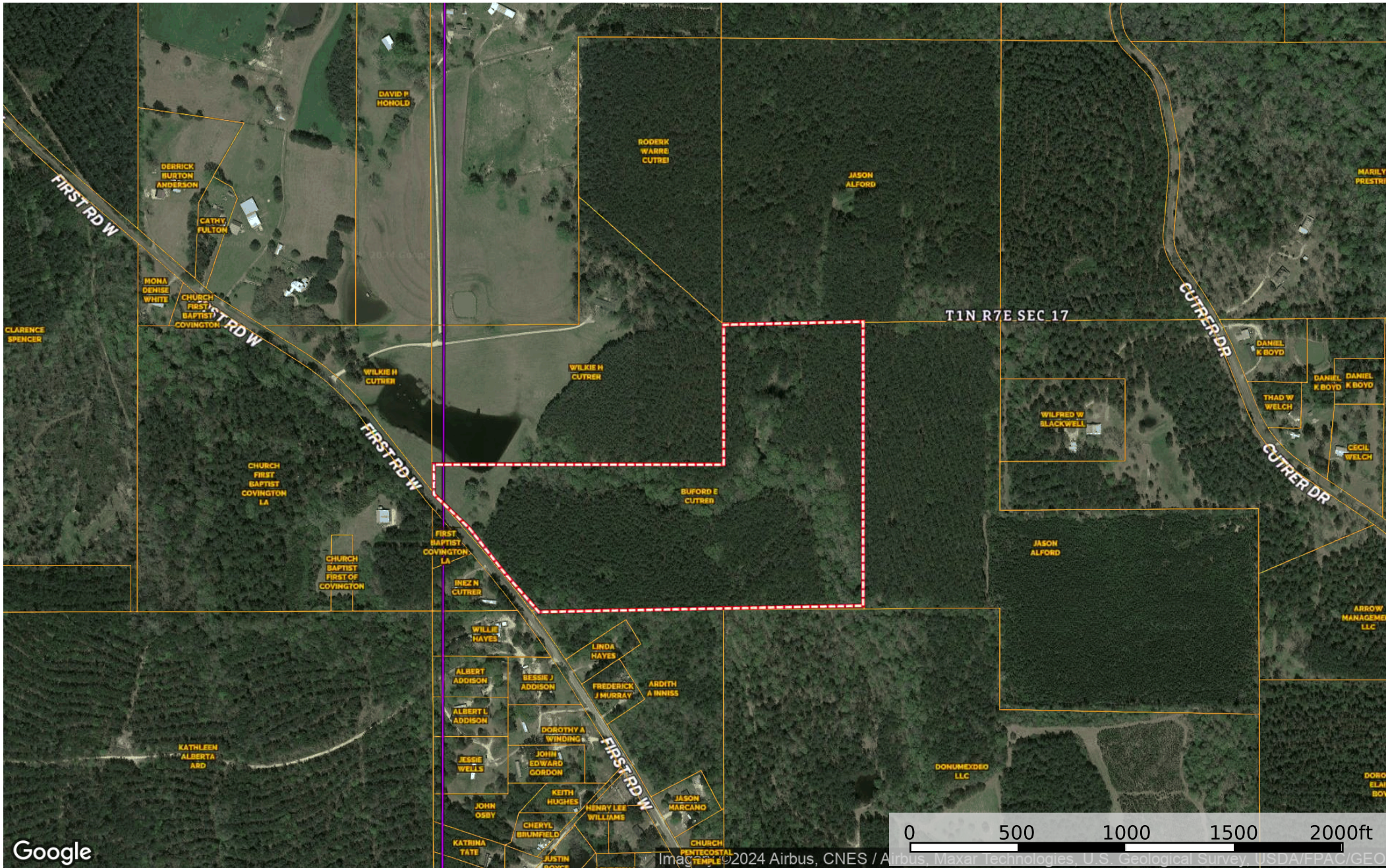
- Great Community
- Abundant Wildlife





Google

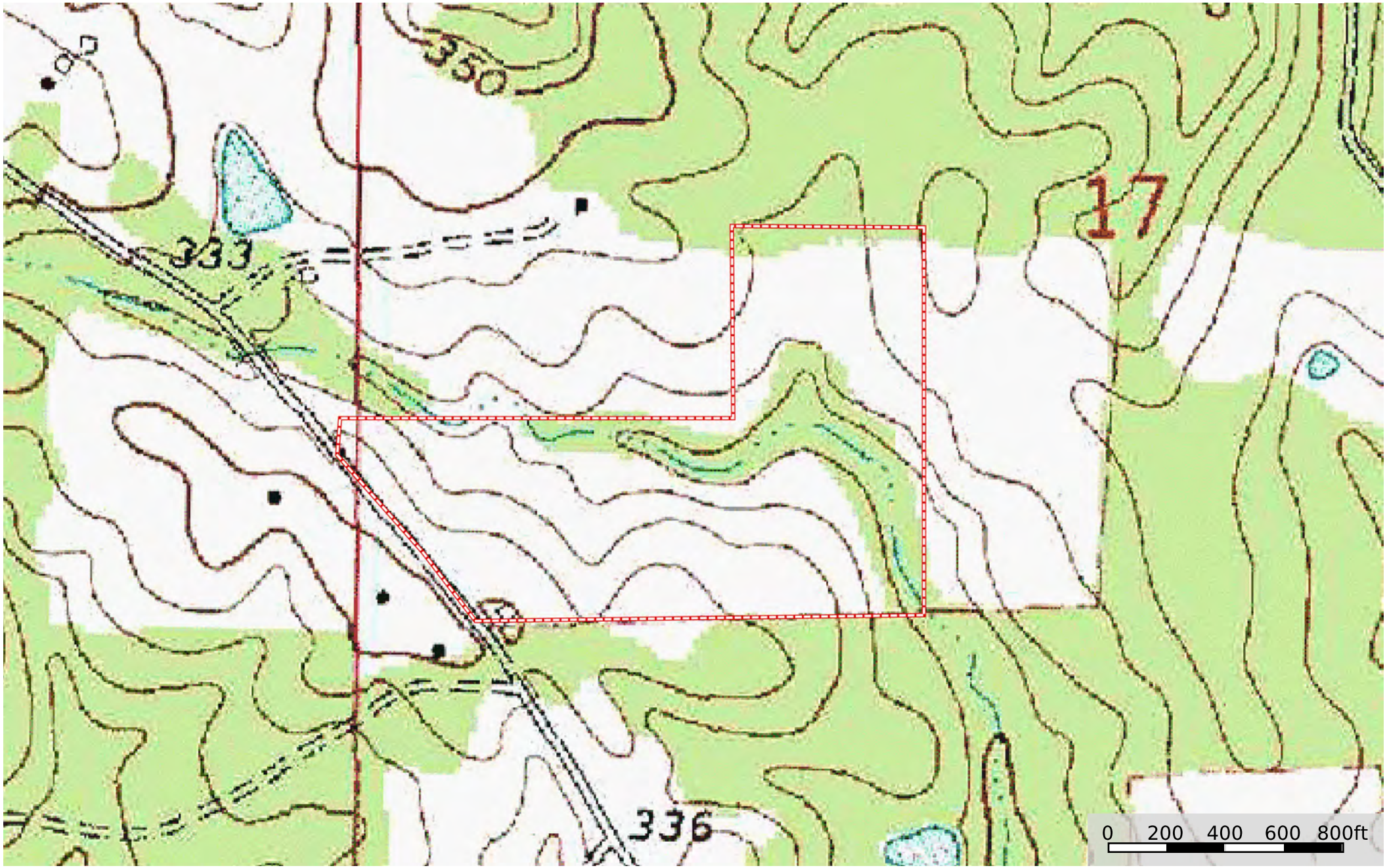
 Boundary



Google

Image © 2024 Airbus, CNES / Airbus, Maxar Technologies, U.S. Geological Survey, USDA/FPAC/Geo

Boundary



 Boundary