

**Kiowa & Crowley County, CO
804± Acres CRP Farmland
Haswell, Colorado**

**Listing Price:
\$539,455
\$671 per acre**



LISTING # 24013



Call me today!

VIRGIL GEORGE, EMPLOYING BROKER

VG@RXL.LAND

Office: 719-346-5420 | Mobile: 719-349-1966

1510 Rose Avenue | Burlington, CO 80807

Licensed in Colorado & Kansas

**Your Local AuctionTime.com Representative
Call to List your Equipment Today!**



www.rockingxland.com

Where a Handshake Still Means Something!

NOTICE * BROKER HAS GATHERED INFORMATION FROM SOURCES DEEM RELIABLE. ALTHOUGH BROKER MAKES NO WARRANTIES EXPRESSED OR IMPLIED. BROKER SHALL BE REPRESENTING AS A TRANSACTION BROKER. VIEW ADDITIONAL INFORMATION AND PROPERTIES AT WWW.ROCKINGXLAND.COM

FEATURES:

KIOWA COUNTY CRP

- **Tract #1** - SW4 24-T20S-R53W, 127.54 ac./ \$2,627.32 / exp 9/30/2032
Listing Price: \$65,700 Taxes for Tract 1 & 2: \$505.96
- **Tract #2** - W2 25-T20S-R53W, 279.94 ac. / \$5,341.26 / exp 9/30/2032
Listing Price: \$133,550
- **SOLD** Tract #3 - N2 14-T19S-R50W, 320.9 ac. / \$6,145.24 / exp 9/30/2032
Listing Price: \$178,468 Taxes: \$437.90
- **SOLD** Tract #4 - N2 23-T19S-R50W, 316.38 ac. / \$7,048.95 / exp 9/30/2032
Listing Price: \$204,714 Taxes: \$437.90
- **SOLD** Tract #5 - Tract in 25-T19S-R52W, 114.87 ac./ \$2,366.32/ exp 9/30/2032
Listing Price: \$68,722 Taxes: \$121.92
- **Tract #6** - NE4 21-T20S-R51W, 152.14 ac. /\$2,660.93 /exp 9/30/2032
Listing Price: \$93,570 Taxes for Tracts 6 & 7: \$417.08
- **SOLD** Tract #7 - NW4 22-T20S-R51W, 157.55 ac. / \$3,221.90 / exp 09/30/2032
Listing Price: \$93,570
- **SOLD** Tract #8 - NE4 10-T19S-R50W, 166.94 ac. / \$3,355.49 / exp 09/30/2032
Listing Price: \$97,449 Taxes for Tracts 8, 9 & 10: \$1,102.68
- **SOLD** Tract #9 - N2 11-T19S-R50W, 318.24 ac. / \$6,654.40 / exp 09/30/2032
Listing Price: \$193,255
- **SOLD** Tract #10 - W2 1-T19S-R50W, 342.84 ac. / \$8,520.55 / exp 09/30/2032
Listing Price: \$247,452
- **SOLD** Tract #11 - N2 10-T19S-R52W, 313.45 ac. / \$5,544.93 / exp 09/30/2030
Listing Price: \$161,035 Taxes: \$337.32

CROWLEY COUNTY CRP

- **Tract #12** - Tracts in 2 & 11-T20S-R55W, 244.95 ac./\$8,492.42/exp. 9/30/2032
Listing Price: \$246,635 Taxes: \$236.72



call me today!

VIRGIL GEORGE, EMPLOYING BROKER

VG@RXLLAND

Office: 719-346-5420 | Mobile: 719-349-1966

1510 Rose Avenue | Burlington, CO 80807

Licensed in Colorado & Kansas

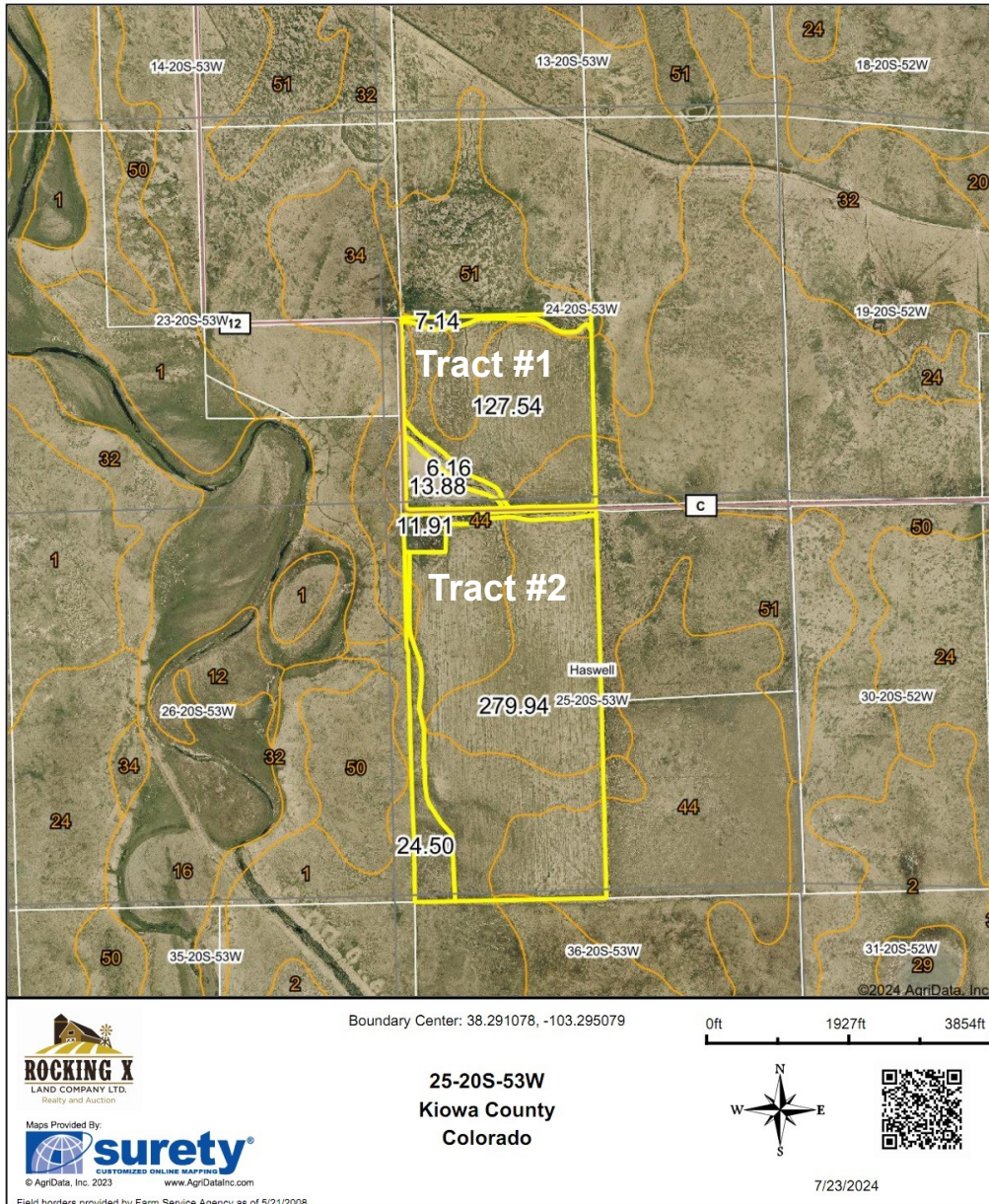
Your Local AuctionTime.com Representative
Call to List your Equipment Today!

www.rockingxland.com



Where a Handshake Still Means Something!

Aerial Map



call me today!

VIRGIL GEORGE, EMPLOYING BROKER

VG@RXL.LAND

Office: 719-346-5420 | Mobile: 719-349-1966

1510 Rose Avenue | Burlington, CO 80807

Licensed in Colorado & Kansas

Your Local AuctionTime.com Representative
Call to List your Equipment Today!

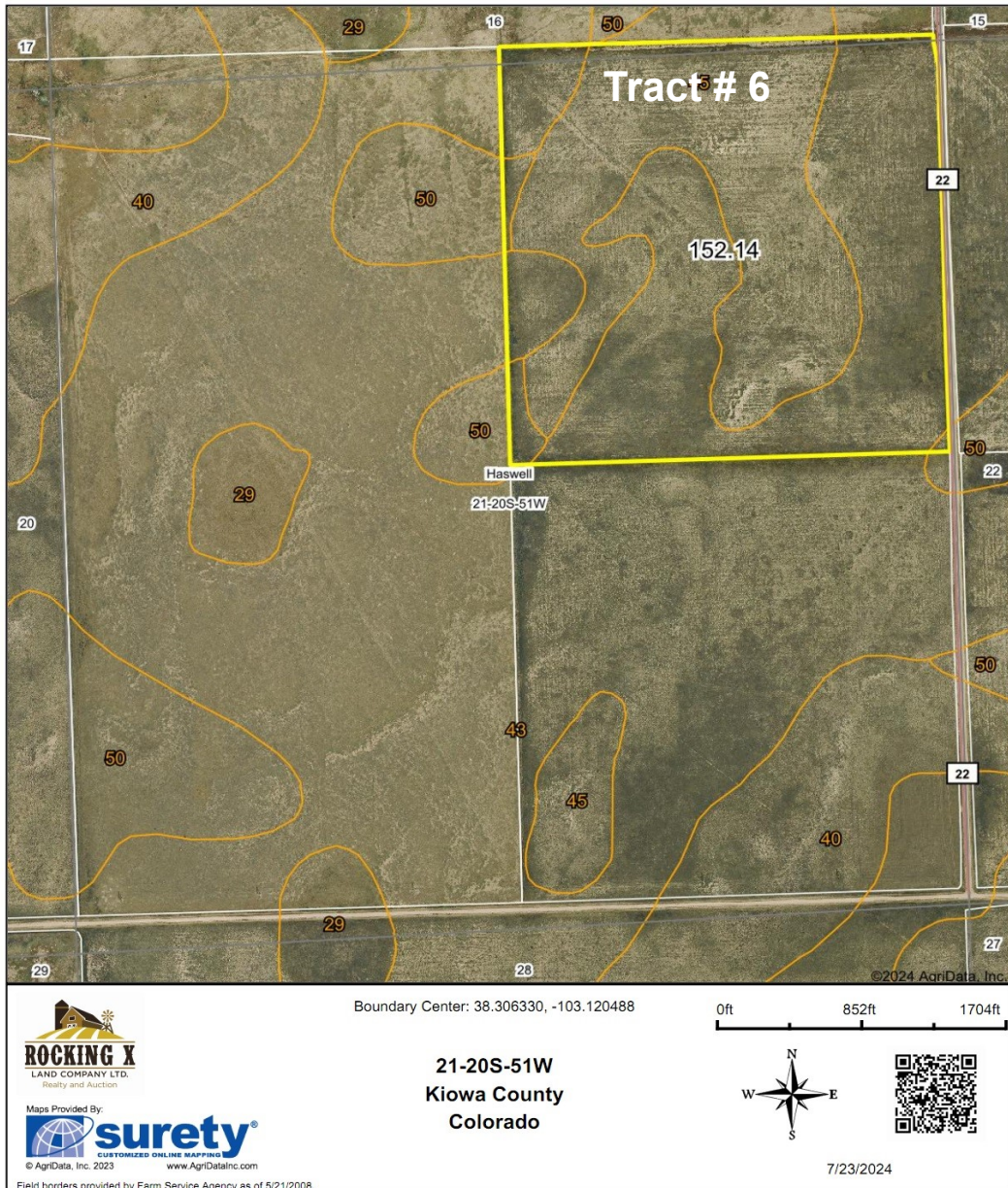


www.rockingxland.com

Where a Handshake Still Means Something!

NOTICE * BROKER HAS GATHERED INFORMATION FROM SOURCES DEEM RELIABLE. ALTHOUGH BROKER MAKES NO WARRANTIES EXPRESSED OR IMPLIED. BROKER SHALL BE REPRESENTING AS A TRANSACTION BROKER. VIEW ADDITIONAL INFORMATION AND PROPERTIES AT WWW.ROCKINGXLAND.COM

Aerial Map



call me today!

VIRGIL GEORGE, EMPLOYING BROKER

VG@RXL.LAND

Office: 719-346-5420 | Mobile: 719-349-1966

1510 Rose Avenue | Burlington, CO 80807

Licensed in Colorado & Kansas

Your Local AuctionTime.com Representative
Call to List your Equipment Today!



www.rockingxland.com

Where a Handshake Still Means Something!

NOTICE * BROKER HAS GATHERED INFORMATION FROM SOURCES DEEM RELIABLE. ALTHOUGH BROKER MAKES NO WARRANTIES EXPRESSED OR IMPLIED. BROKER SHALL BE REPRESENTING AS A TRANSACTION BROKER. VIEW ADDITIONAL INFORMATION AND PROPERTIES AT WWW.ROCKINGXLAND.COM

Aerial Map



call me today!

VIRGIL GEORGE, EMPLOYING BROKER

VG@RXL.LAND

Office: 719-346-5420 | Mobile: 719-349-1966

1510 Rose Avenue | Burlington, CO 80807

Licensed in Colorado & Kansas

Your Local AuctionTime.com Representative
Call to List your Equipment Today!

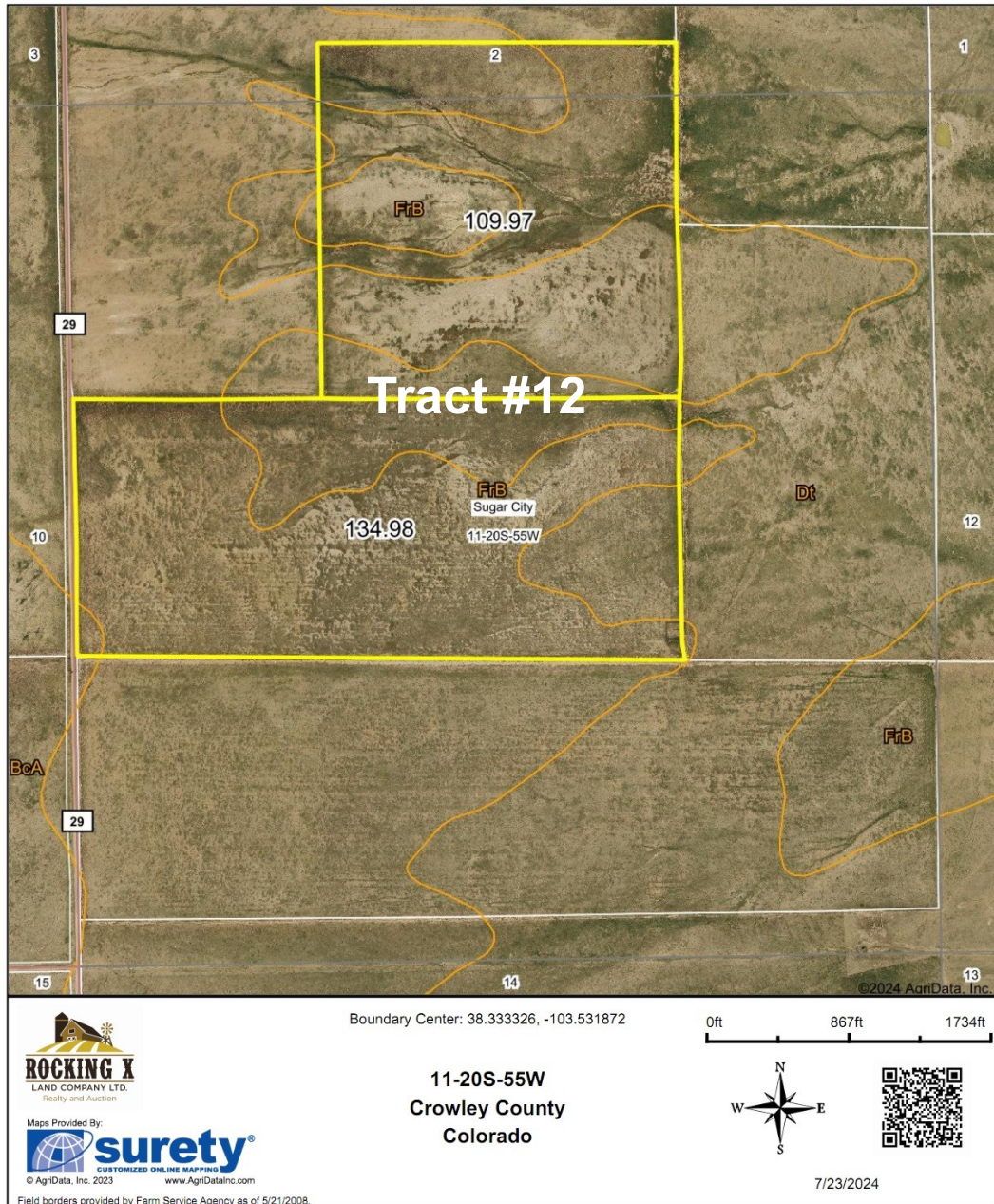


www.rockingxland.com

Where a Handshake Still Means Something!

NOTICE * BROKER HAS GATHERED INFORMATION FROM SOURCES DEEM RELIABLE. ALTHOUGH BROKER MAKES NO WARRANTIES EXPRESSED OR IMPLIED. BROKER SHALL BE REPRESENTING AS A TRANSACTION BROKER. VIEW ADDITIONAL INFORMATION AND PROPERTIES AT WWW.ROCKINGXLAND.COM

Aerial Map



call me today!

VIRGIL GEORGE, EMPLOYING BROKER

VG@RXL.LAND

Office: 719-346-5420 | Mobile: 719-349-1966

1510 Rose Avenue | Burlington, CO 80807

Licensed in Colorado & Kansas

Your Local AuctionTime.com Representative
Call to List your Equipment Today!



www.rockingxland.com

Where a Handshake Still Means Something!

NOTICE * BROKER HAS GATHERED INFORMATION FROM SOURCES DEEM RELIABLE. ALTHOUGH BROKER MAKES NO WARRANTIES EXPRESSED OR IMPLIED. BROKER SHALL BE REPRESENTING AS A TRANSACTION BROKER. VIEW ADDITIONAL INFORMATION AND PROPERTIES AT WWW.ROCKINGXLAND.COM