



# Ultimate Outdoor Hideaway

Fort Meade, FL

**Fischbach**  
LAND COMPANY

*Lifestyle & Luxury*



## SPECTACULAR, NATURAL FLORIDA SANCTUARY AWAITS THE ULTIMATE OUTDOOR ENTHUSIAST!

This 285± retreat boasts a custom-built 3,194 GSF home, party barn, guest apartment, 5-stand for sporting clays, a 13± acre private fishing pond - stocked with largemouth bass and dock, improved pastureland - ideal for hunting - with native, untouched oak hammocks, pine stands and palmetto scrub. Along with 5 acres directly on Lake Buffum for quick access to some of the best fishing found in Polk County. The property is an excellent example of the gorgeous native Florida landscape. This property has it all! Hunting, fishing, entertaining, and relaxing in the beauty and privacy this sanctuary provides.

**Pricing: \$4,250,000**



[Click for Video](#)

[Click for Website](#)

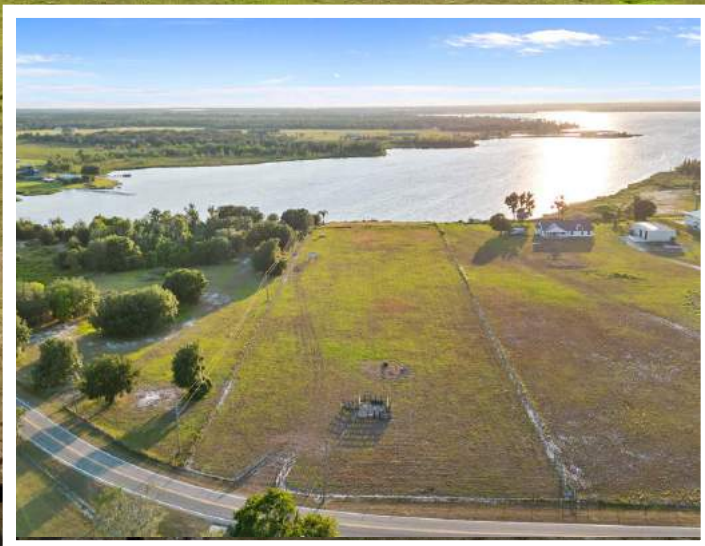
Acreage: 285± Acres

Improvements: 2,144 HSF 2BR/2.5BA Custom Home  
Party Barn with Apartment Storage  
Barns

Horse Stables  
Cow Pens  
5-Stand Shooting Pavilion

# ANGLER'S DREAM

Enjoy the picturesque sunsets on the private dock, while casting a line for largemouth bass on this 13-acre private fishing pond. With 225 feet of direct access onto Lake Buffum, you will have 1,268 acres of ideal fishing for largemouth bass, bluegill, and catfish right from the shoreline. Imagine waking up to the tranquil sound of lapping waves and the promise of a day filled with fishing adventures just steps away from your doorstep, without the hassle of traveling leaving you with more quality time spent outdoors.





## SPORTSMAN'S PARADISE

Explore winding trails of native oak hammocks and pine forests, buffered by 3,178± acres of conservation land. Enjoy the outdoors and all of the wild game this property has to offer! There are two deer stands and three wildlife feeders providing everything needed for plenty of fauna.

# THE HEART OF THE RANCH

The custom-built main house, designed for entertaining and family gatherings offers glorious waves of natural sunlight and spectacular views of the surrounding ranch. The welcoming front porch boasts gorgeous sunset views across Lake Buffum and the land. The timeless exterior is built to withstand the Florida seasons with a metal roof, and a whole-home generator. As you step through the front doors you will be welcomed into the open and airy main living area that flows seamlessly into the dining room and kitchen. Custom woodwork, vaulted ceilings, hardwood floors, exposed beams, high-end finishes, and meticulous maintenance are some of the reasons why this home makes such a unique and lasting impression. The two-story home provides extreme privacy as the second bedroom and full bath are upstairs, next to the loft office. The master bedroom suite provides a sanctuary to relax with a gas fireplace, an ensuite bathroom with double vanity, walk-in-closet, and private access to the front porch where a hot tub awaits for you to unwind and enjoy the sunset.





## THE CORE OF THE HOME

Vaulted Ceilings with Exposed Beams

Custom Wood Finishes

Natural Lighting with Gorgeous Views



## A SERENE ESCAPE

Private Entrance from Front Patio  
in Primary Bedroom

Gas Fireplace

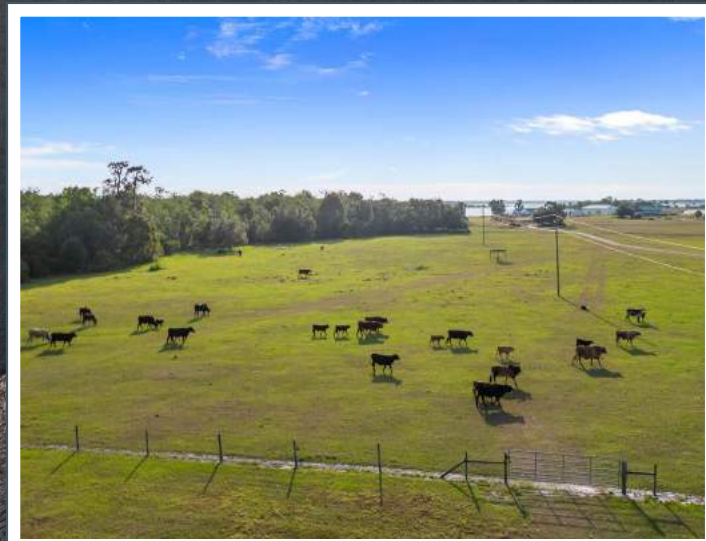
Walk-In Closet and Double Vanity  
in Primary Bathroom

Second Floor Loft and Ensuite Bedroom



## GUEST GETAWAY

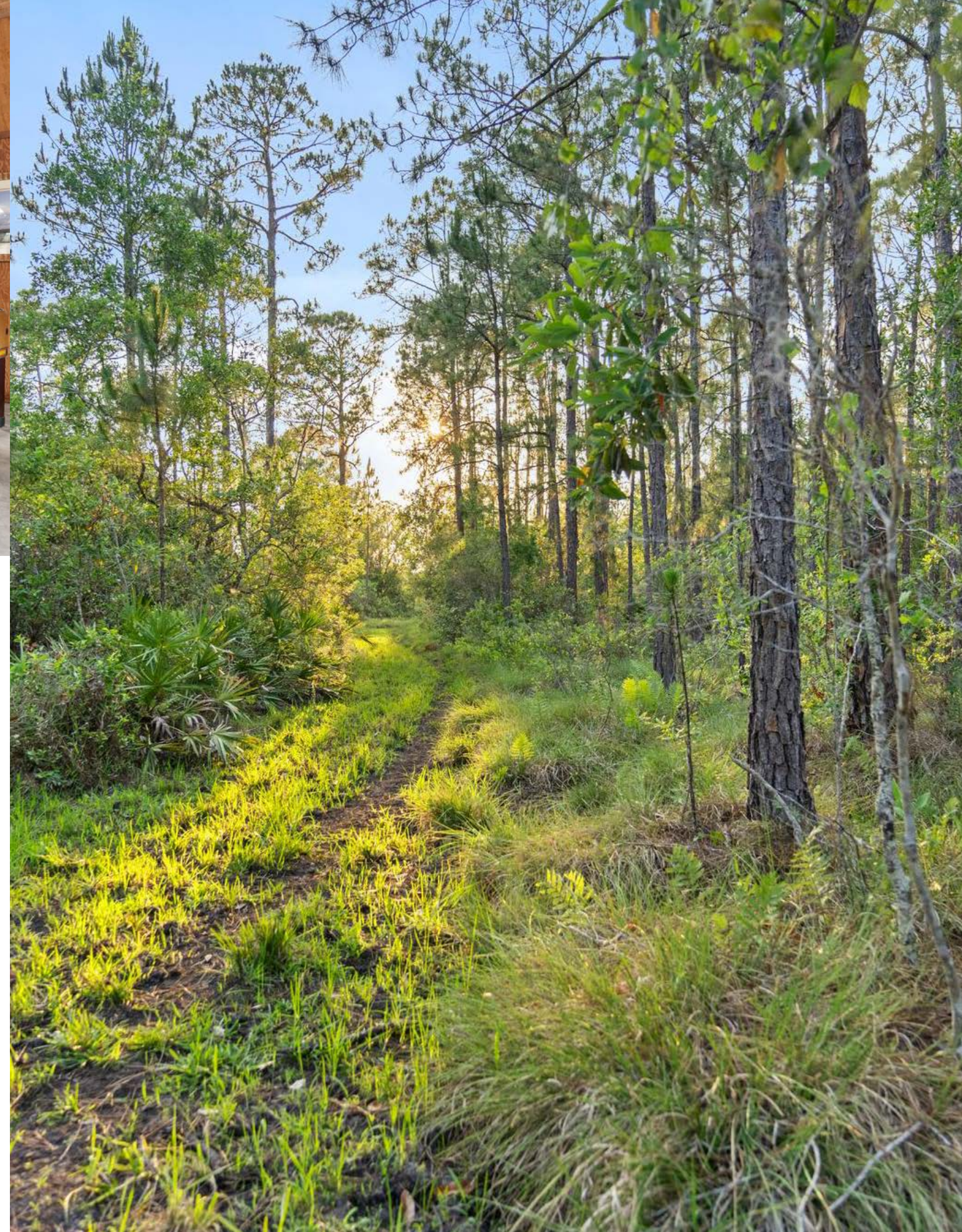
Guests can make themselves at home within the privacy of their own 2-bedroom apartment. Located on the second floor of the toy storage barn, the 784 SF apartment is equipped with a full kitchen, living room, and bathroom. The space is functional and spacious, with the best views of the property from the large screened-in porch.





**GOOD TIMES  
ABOUND**

Built-In Wet Bar and Seating for Six  
Air Conditioned  
Bathroom with Private Entrance to Barn  
Outdoor Firepit  
Large Equipment Storage





# Fischbach LAND COMPANY

*Lifestyle & Luxury*

REPRESENTED EXCLUSIVELY BY:



**Reed Fischbach**  
Broker

[reed@fischbachlandcompany.com](mailto:reed@fischbachlandcompany.com)



**Ellie Dahl**  
Agent

[ellie@fischbachlandcompany.com](mailto:ellie@fischbachlandcompany.com)

917 S PARSONS AVENUE | BRANDON, FL 33511 | 813-540-1000