

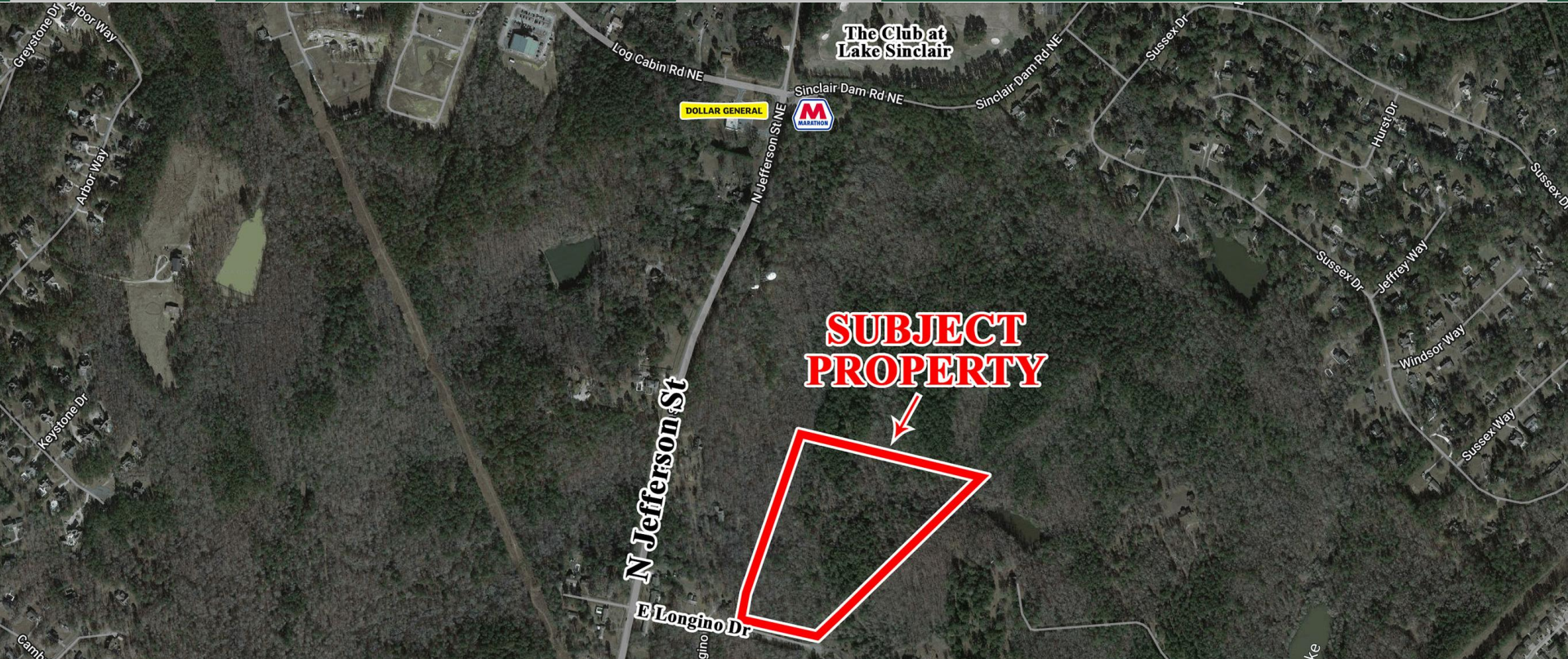
±20 Acre Residential Tract
2067 N Jefferson Street
Milledgeville, GA 31061



Summary

Area Info

Aerial



SALE PRICE: \$30,000/Per Surveyed Acre

CONTACT

Patty Burns, CCIM, ALC
478-746-9421 Office
478-951-5100 Cell
patty@fickling.com

Trip Wilhoit, CCIM, ALC
478-746-9421 Office
478-960-4080 Cell
trip@fickling.com

Jim Fain, CRS, ABR
478-997-6400 Office
478-363-2145 Cell
jfain@fickling.com



577 Mulberry St, Suite 1100
Macon, GA 31201
478.746.9421 Office
<https://commercial.fickling.com>

PROPERTY INFORMATION

BUILDING

Property Address: 2067 N Jefferson Street
 & 148 Georgian Terrace
 Milledgeville, GA 31061

County: Baldwin

Total Size: ±20 Acres

Utilities: All Available

Topography: Gently Rolling

Traffic Count: 7,570 Vehicles Per Day

SITE

Site Size: ±20 Acres

Parcel IDs: 087 045A, 087 049

Zoning: None – In Baldwin County

SALE PRICE: \$30,000/Per Surveyed Acre

Demographics 2023	1 Mile	3 Miles	5 Miles
Population	1,164	11,738	26,412
Avg HH Income	\$204,585	\$130,356	\$99,345
Median Age	38.2	36.5	35.1

CONTACT

<p>Patty Burns, CCIM, ALC 478-746-9421 Office 478-951-5100 Cell patty@fickling.com</p>	<p>Trip Wilhoit, CCIM, ALC 478-746-9421 Office 478-960-4080 Cell trip@fickling.com</p>	<p>Jim Fain, CRS, ABR 478-997-6400 Office 478-363-2145 Cell jfain@fickling.com</p>	 <p>577 Mulberry St, Suite 1100 Macon, GA 31201 478.746.9421 Office https://commercial.fickling.com</p>
--	--	--	---

This information is from resources deemed to be reliable and is subject to change without notice. No warranties or guarantees for accuracy are made by Fickling and Company.

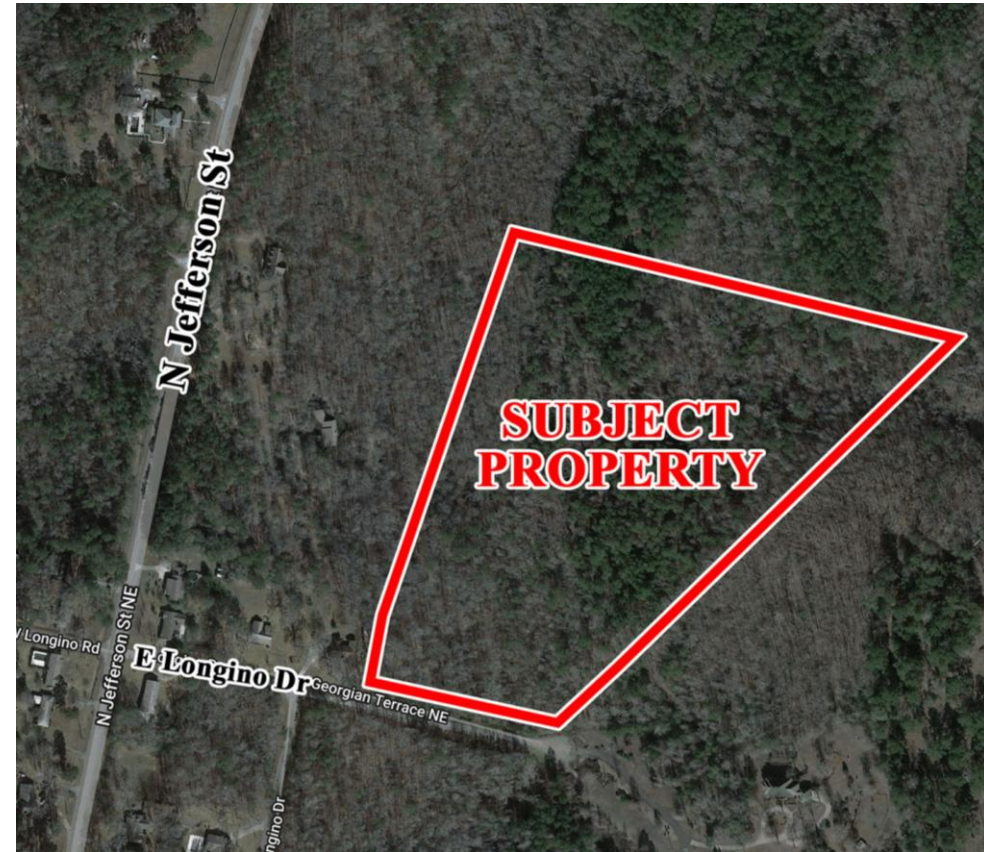
PROPERTY INFORMATION

BUILDING

This property is in a prime location, located in North Baldwin County. Acreage is comprised of the rear portion of 2067 N Jefferson Street and is accessible via 148 Georgian Terrace. All utilities are available to the site, which has a gently rolling topography. Location is ideal for a residential subdivision, townhomes, or multifamily apartments.

SITE

Site is convenient to downtown Milledgeville to the south, just minutes from a wide variety of shopping, dining, and banking options. To the north, the site has good proximity to The Club at Lake Sinclair country club and Aubri Lane's, Kroger, Publix, and all that Lake Sinclair has to offer.



CONTACT

Patty Burns, CCIM, ALC
478-746-9421 Office
478-951-5100 Cell
patty@fickling.com

Trip Wilhoit, CCIM, ALC
478-746-9421 Office
478-960-4080 Cell
trip@fickling.com

Jim Fain, CRS, ABR
478-997-6400 Office
478-363-2145 Cell
jfain@fickling.com



577 Mulberry St, Suite 1100
Macon, GA 31201
478.746.9421 Office
<https://commercial.fickling.com>

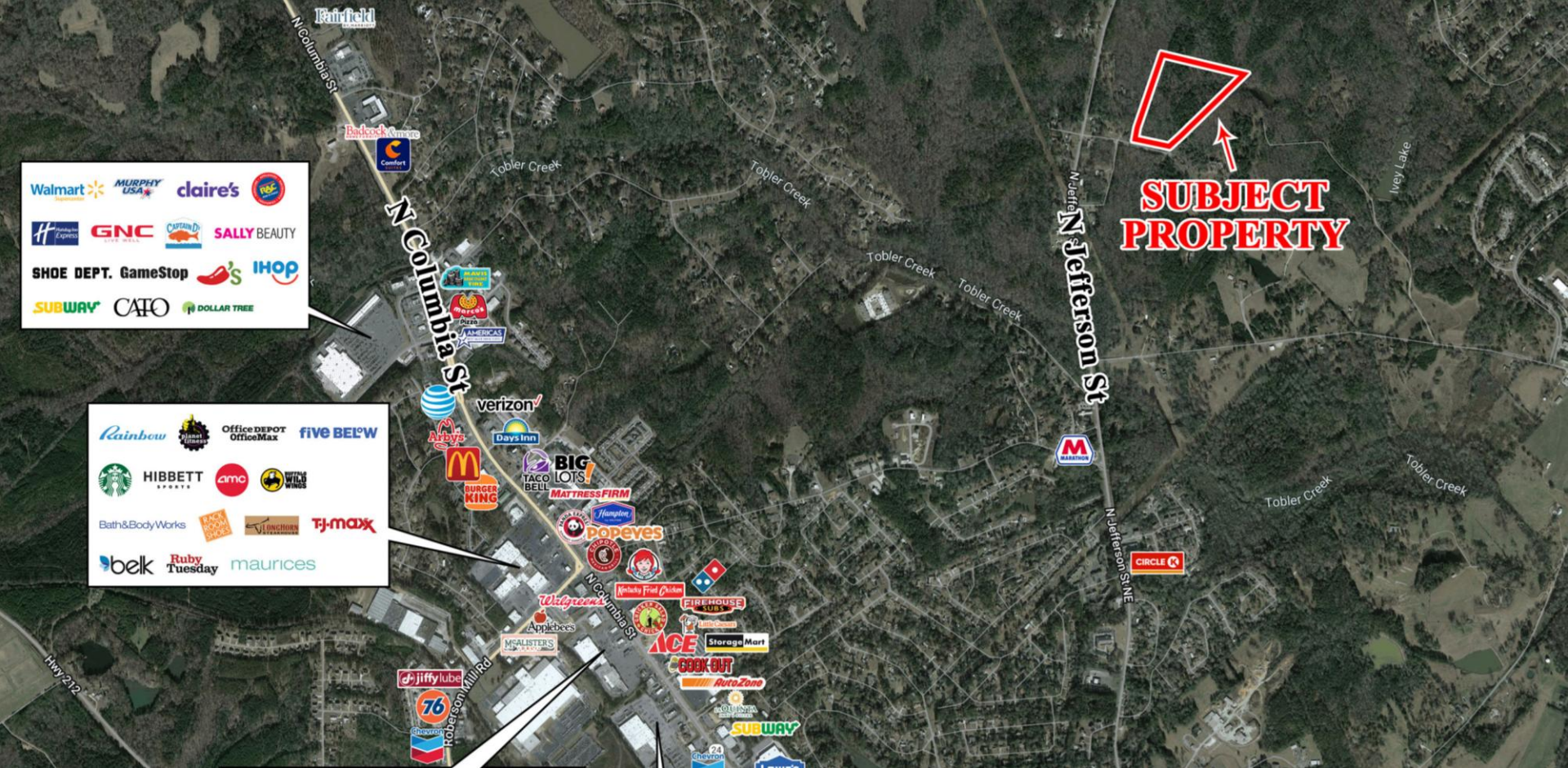
±20 Acre Residential Tract
 2067 N Jefferson Street
 Milledgeville, GA 31061



Summary

Area Info

Aerial



Patty Burns, CCIM, ALC
 478-746-9421 Office
 478-951-5100 Cell
 patty@fickling.com

Trip Wilhoit, CCIM, ALC
 478-746-9421 Office
 478-960-4080 Cell
 trip@fickling.com

Jim Fain, CRS, ABR
 478-997-6400 Office
 478-363-2145 Cell
 jfain@fickling.com



577 Mulberry St, Suite 1100
 Macon, GA 31201
 478.746.9421 Office
<https://commercial.fickling.com>

CONTACT