



WY Bethlehem - 30 acres in **Kemper County**, Mississippi just south of Highway 16 and 18 miles east of Philadelphia. The mix of natural 8 year planted pine and Stream-side Management Zone can offer opportunities for forestry, agriculture and recreational uses.

Access is available via an easement off C Westerfield Road, utilities they are nearby but not on the property. Overall, this is a promising piece of land with potential for small timber investment and homesite.

\$2100 per ac. / \$63,126.00

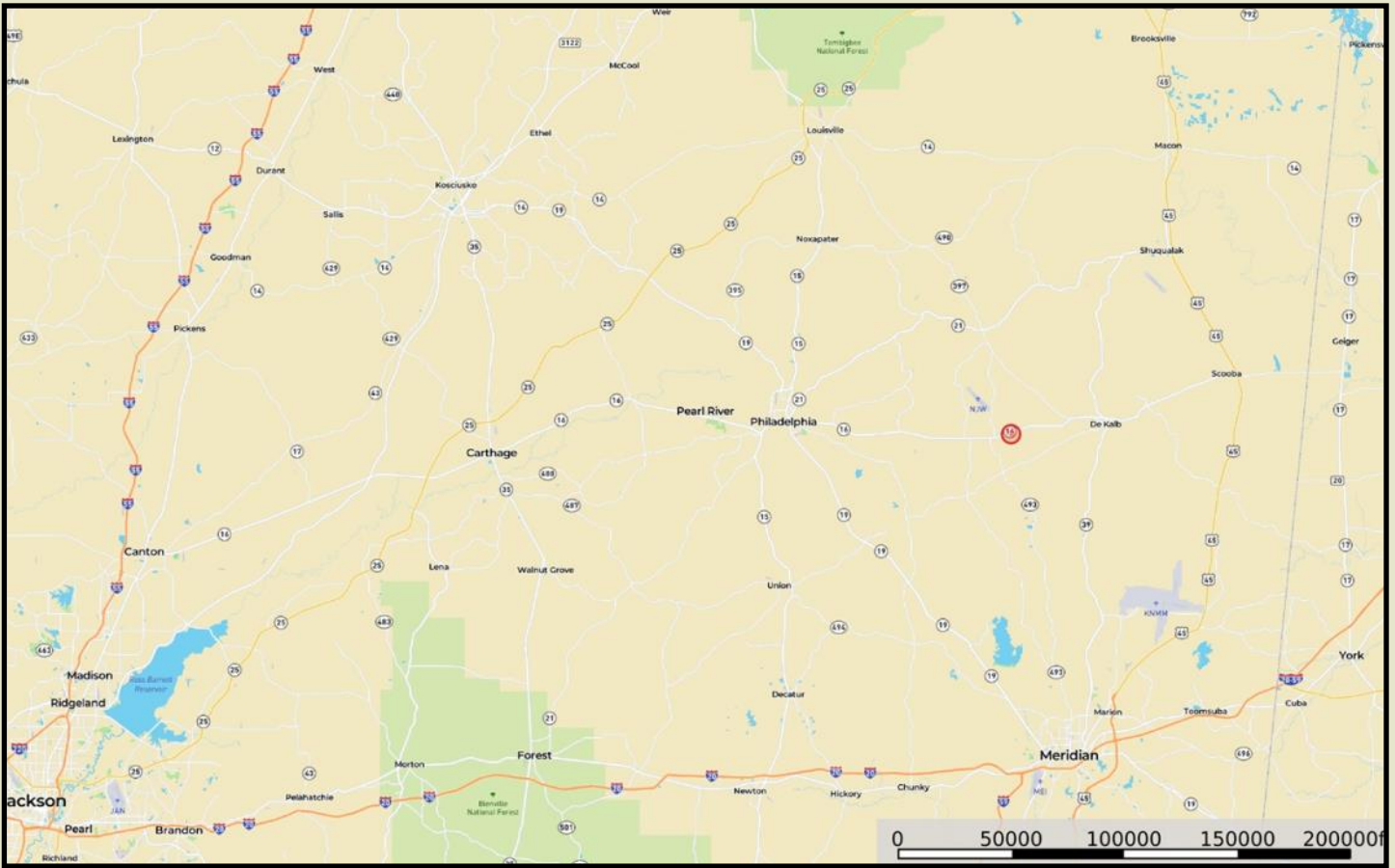
"Guiding Your Land Decisions for Over 60 Years"

FARM | TIMBER | HUNTING

Sartain's Heritage Properties, LLC

601-856-2720 • www.SartainsHeritage.com

All information contained herein is supplied by sources deemed reliable, but is not guaranteed by Sartain's Heritage Properties, its Brokers or Agents. Properties are subject to errors, omissions, correction, price change, prior sale or withdrawal without notice. All Buyer's agents are required be identified on the first contact with Broker/Agents of Sartain's Heritage Properties and must accompany the buyer on showings to receive full fee participation. Otherwise, the fee participation shall be at the sole discretion of the Broker and Sartain's Heritage Properties.



All information contained herein is supplied by sources deemed reliable, but is not guaranteed by Sartain's Heritage Properties, its Brokers or Agents. Properties are subject to errors, omissions, correction, price change, prior sale or withdrawal without notice. All Buyer's agents are required be identified on the first contact with Broker/Agents of Sartain's Heritage Properties and must accompany the buyer on showings to receive full fee participation. Otherwise, the fee participation shall be at the sole discretion of the Broker and Sartain's Heritage Properties.