



**Breedlove**<sup>®</sup>

FARMS | ESTATES | LAND

**Tailwind Farm**  
**5710 Wolf Ridge Way**  
Lenoir, North Carolina 28645

---

Julie R. Breedlove  
704.661.9619  
julie@breedlovecarolinas.com  
*breedlovesfarmsestatesandland.com*

Premier

**Sotheby's**  
INTERNATIONAL REALTY

5710



## **Tailwind Farm**

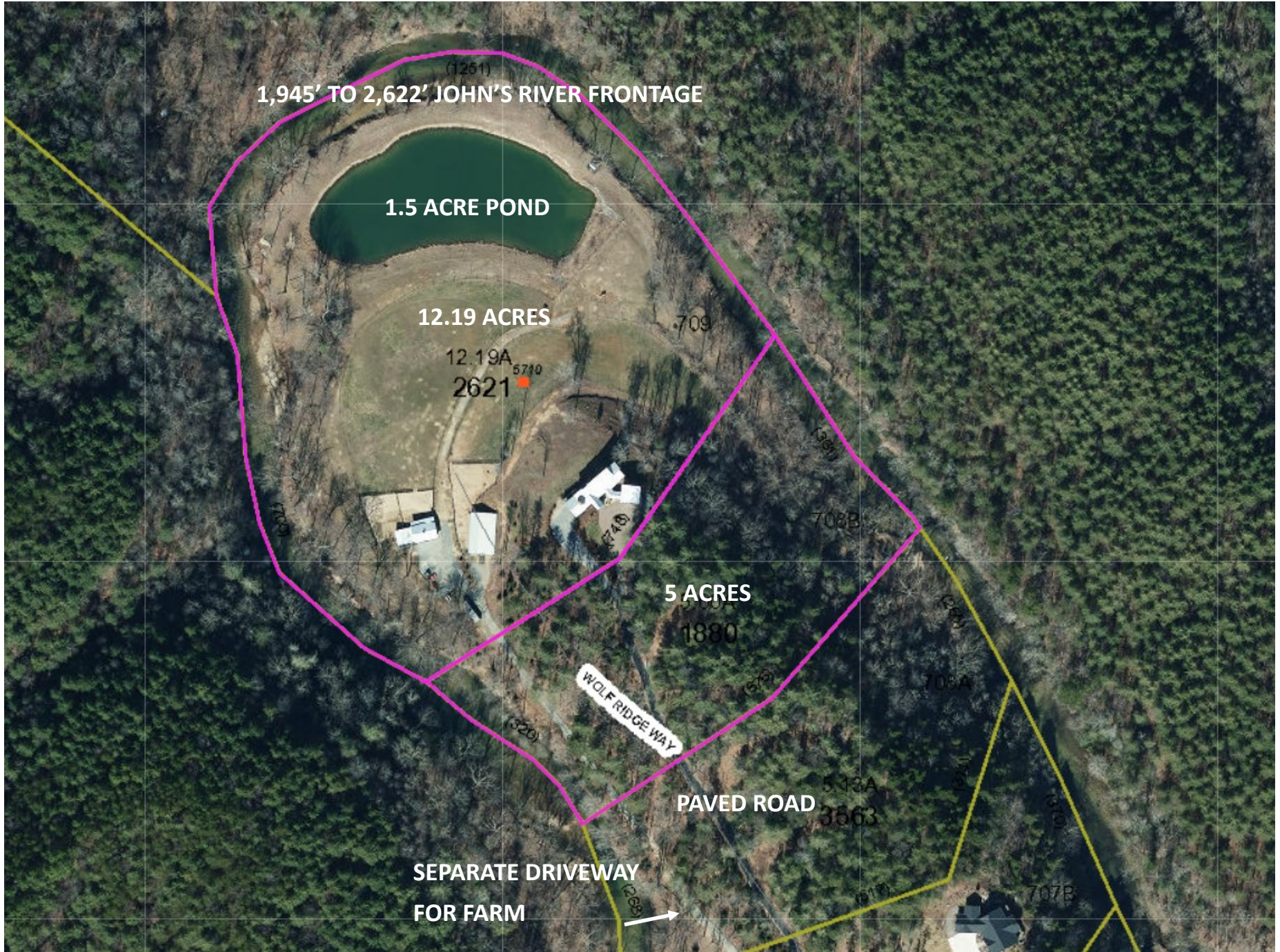
### ***An Equestrian Mountain Estate***

While The Coves Mountain River Club has unrivaled community amenities and beauty, the real gem of the community is located at 5710 Wolf Ridge Way. The original developer selected this location to build and took great care in the home construction. The current owners enhanced the site with farm features, land, and home improvements. Nowhere else does a home and all its amenities better fit the land. Beginning with the home strategically situated on the high ground to the well-planned equestrian facilities and pastures to the 1.5-acre stocked pond and the bordering John's River. The owner's pride is evident in the completion of this impeccable estate, and they remain outstanding stewards of the land and facilities. All is evident upon driving between the rock columns, opening to a large paver driveway, river rock walls & copper rain chains. The home features reclaimed barn wood siding with river rock accents and a metal roof. Designed to bring the outdoors in, the home has spectacular sightlines with large walls of windows. The outdoor living is facilitated by over 1,400 sq. ft. of porches and patios, including a large, covered deck with stone wood burning fireplace, and a lower-level patio, all with views of the beautiful property and mountains beyond. The 3,839 sq. ft. house is smartly laid out on 2 levels. The main level features an open concept in the main living area with the great room, anchored by a large rock fireplace with wood burning stove insert, dining room and kitchen all melting together. Stainless steel appliances, large granite island/breakfast bar, custom cabinets, large walk-in pantry, and French glass doors to the outside. Much of the remainder of the main level is dedicated to a large primary suite with sitting room and large bathroom. Again, an abundance of windows reminds you of the natural beauty that surrounds this special place. The lower level offers a family room with river rock wall and fireplace and entertainment wet bar, and 3 guest bedrooms, one with an en-suite bathroom, the other with private baths and a shared shower/tub private space.

The estate has a separate driveway leading to the farm amenities, including a four stall barn built into the side of the hill, with concrete floored storage room, tack room w/sink, countertops and bridle and saddle racks. Stalls have fans, mats, drop down yokes and access to the dry lots and pastures, ensuring your farm animals won't be standing in the mud. Multiple pastures, all interconnecting and dry lots allow for both free grazing and restricted grazing. A farm equipment building with two stall run-in shelter and a truck, trailer and tractor equipment building with any additional shelter allows you to separate your horses, donkeys, goats, etc. as needed. Everything has been set up for the health of the farm animal and convenient animal care for the owner.

Short trail rides along the river and access to community trails just outside of the property mean you can enjoy as much or little trail riding as time allows. If not trail riding for the day, you may enjoy putting the kayaks or canoe in the river and floating down to the community beach area. Maybe do a little fishing along the way. The possibilities for outdoor living and activities at Tailwind Farm are endless.

# Property Aerial



OFFERED WITH 12.19 ACRES OR 17.19 ACRES PID # 04-7-3709 AND PID # 04-7-3708B

An aerial photograph of a large estate nestled in a dense forest. The estate features a large, multi-story house with a wrap-around porch, a paved driveway, and several outbuildings including a barn and smaller sheds. A large, fenced-in green field with a circular riding arena is visible. A large pond occupies the lower-left portion of the image. A red line is drawn on the image, outlining an area of approximately 5 acres in the upper-middle section of the property, which is currently wooded. The text "Additional 5 Acres Available Approximate Lines" is overlaid on this red-outlined area.

Additional 5 Acres Available  
Approximate Lines

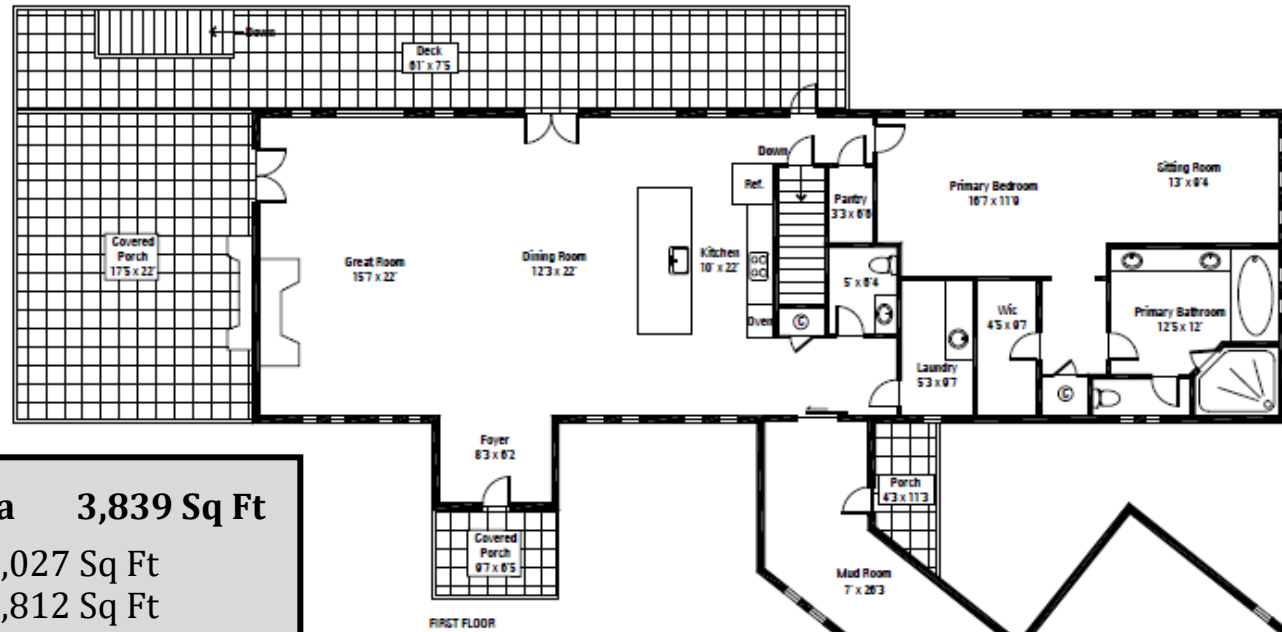
# Property Features

---

- Two Parcels Available (12.19 Acres & 5 Acres)
- Paved Driveway to Home
- Stone Columns at Entrance
- Paver Motor Court
- River Rock Retaining Walls (Rock Collected from Property)
- Pond
- 1,945' to 2,622' of Johns River Frontage
- Kayak/Canoe Rack
- Stairs Accessing the River
- Fire Pit



# Floor Plan

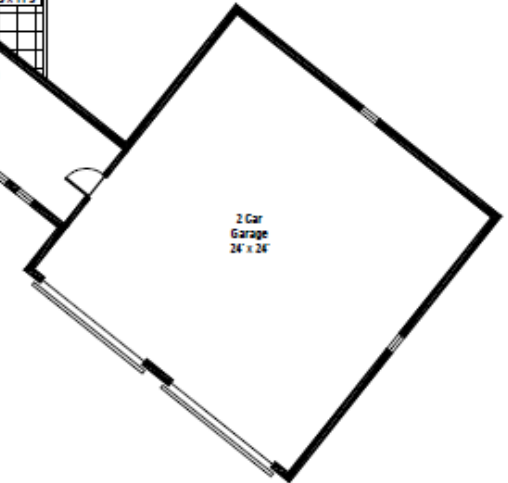
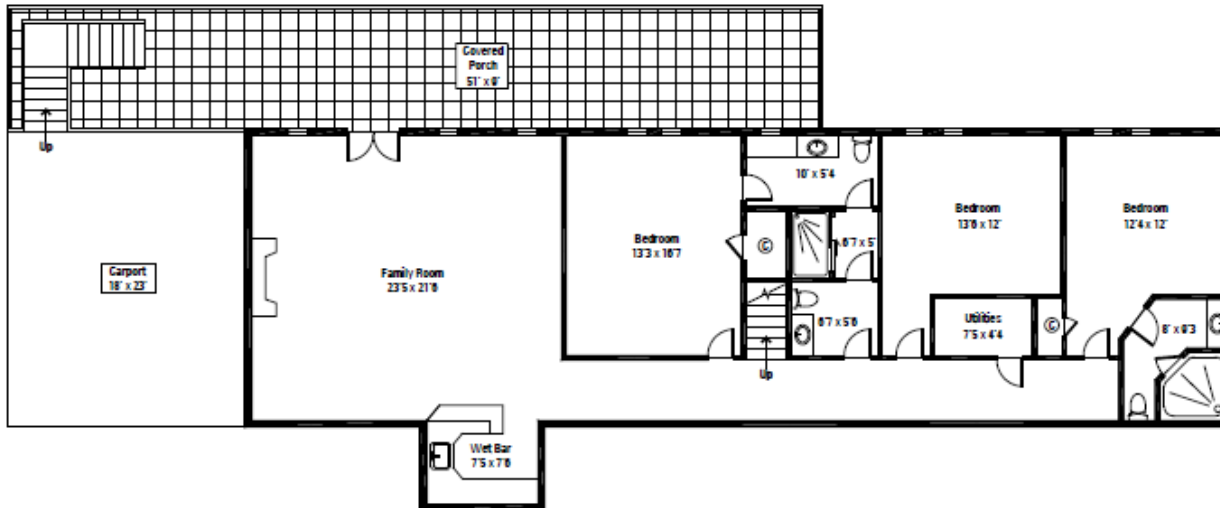


**Total Heated Living Area 3,839 Sq Ft**

Main Floor 2,027 Sq Ft

Finished Basement 1,812 Sq Ft

FIRST FLOOR



## Exterior Features

---

Reclaimed Barn Wood Siding w/River Rock Accents

Metal Roof

2-Car Garage

Electric Car Charger

Lower Level Carport

Cedar & Rock Columns at Front Entrance & Lower Patio

Covered Front Porch

Large Covered Deck w/Stone Wood Burning Fireplace

Deck Across the Back of the Home

Side Porch w/Dog Fenced Area

Stone Chimney



# Interior Features

Built 2014 (Developer's Home)

3,839 Sq Ft

4 Bedrooms — 3 Full & 2 Half-Baths

Open Floor Plan

Foyer Has ¾ Glass Door w/Glass Sidelights

Mud Room Connecting Garage to Home Includes

Door to Side Porch

Laundry Room w/Utility Sink, Granite  
Countertop and Cabinets

Powder Room w/Granite Top Vanity

Hand Planed Multiple Width Hardwood Floors on Main  
Level

Luxury Vinyl Lower Level

Jeld-wen Casement Windows

All Interior and Exterior 8' Solid Core Doors

River Rock Accents (Rock Gathered from Property)





## Kitchen/Dining Area

---

Large Granite Island/Breakfast Bar  
Granite Countertops w/Tile Backsplash  
Stainless Steel Appliances

GE Wall Oven & Microwave

GE Glass Cook Top

Broan Stainless Steel Exhaust Hood

GE Dishwasher

GE Side-by-Side Refrigerator

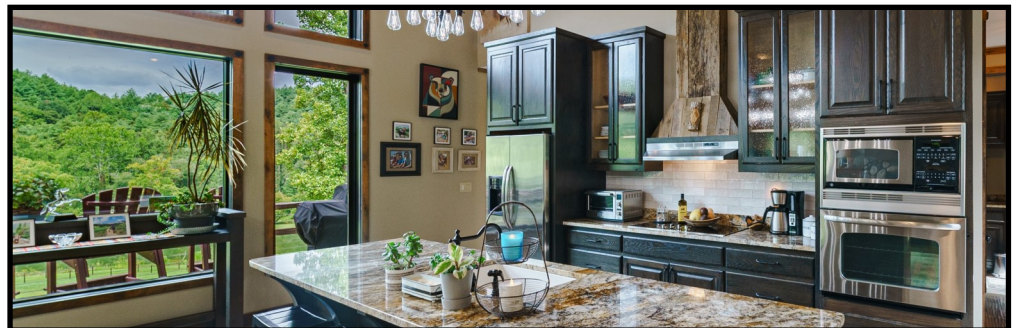
Custom Cabinets w/Soft Return Deep Drawers & Bead  
Glass Upper Cabinets

Large Undermount Porcelain Sink

Large Walk-In Pantry w/Solid Shelves

Multiple Wrought Iron Orbit Light Fixtures Over Island &  
Dining Area

French Glass Doors to Porch & Single Glass Door to Porch



# Great Room

---

Open to Kitchen  
Cathedral Tongue & Groove Wood Ceiling  
Wall of Windows Overlooking the Property  
Glass French Doors Open to Covered Porch  
Large Rock Fireplace w/Wood Burning Stove & Blower  
Built-In Cabinet Beside Fireplace  
Ceiling Fan





## Primary Suite

### Primary Bedroom

Sitting/Reading Area  
Wall of Windows Overlooking the Farm  
Cathedral Ceiling  
Ceiling Fans  
Two Walk-In Closets

### Bathroom

Slate Tile Floor  
Garden Tub Surrounded by River Rocks and Tile  
Frameless Glass and Tile Shower w/River Rock Floor  
Built-In Bench, Rain Head and Handheld  
Linen/Clothes Closet  
Dual Vanity w/Copper Sinks and Granite Countertop



# Guest Bedrooms/Bathrooms

---

## Guest Bedroom One & Two

Each Has a Half Bath w/Shared Tub/Shower Tile Floors in Bathroom, Granite Countertops  
Guest Bedroom One Includes a Make-up Vanity

## Guest Bedroom One

Walk-In Closet w/Solid Shelving  
Two Built-in Bunk Beds  
Wall of Windows Overlooking Farm  
Ceiling Fan

## Guest Bedroom Two

Reclaimed Barn Wood  $\frac{3}{4}$  Wall  
Armoire Closet  
Ceiling Fan

## Guest Bedroom Three w/En-suite Bathroom

Walk-In Closet w/Solid Shelves  
Wall of Windows  
Full Bath w/Large Frameless Glass and Tile Shower  
Granite Top Vanity w/Undermount Sink  
*No Closet but Large Armoire Remains*



# Lower Level

---

Wide Hallways

Luxury Vinyl Flooring

Family Room w/2 Sets of French Doors to  
Covered Patio Area

River Rock and Reclaimed Barn Wood Bar Area  
Copper Sink

Under Counter Beverage Cooler &  
Refrigerator

Wine Glass Hanger

Reclaimed Barn Wood Wall Accents

Floor-to-Ceiling Full River Rock Wall w/Oversized  
Woodburning Fireplace & Tree Mantle

Utility Closet



# Outdoor Living

---

1,456 Sq Ft of Porches & Patios

Wrap-Around Porch w/Cable Allowing Views of Farm & River

Large Covered Side Porch w/Rock Wood Burning Fireplace

Stairs to Lower Level Patio

Lower Level Patio w/Wood & River Rock Columns









# Farm Features

## Separate Driveway to Barns

### 4-Stall Barn

Cinderblock/Wood Exterior

Metal Roof

Concrete Floored Interior Storage/Staging Area w/Feed & Hay

Access to Stalls, Roll-Up End Door

Tack & Feed Room w/Utility Sink, Saddle Racks, Interior & Exterior Door

Grooming/Wash Area w/Hot & Cold Water

12' x 12' Stalls w/ Mats and Access to Covered Overhang & Dry Lots

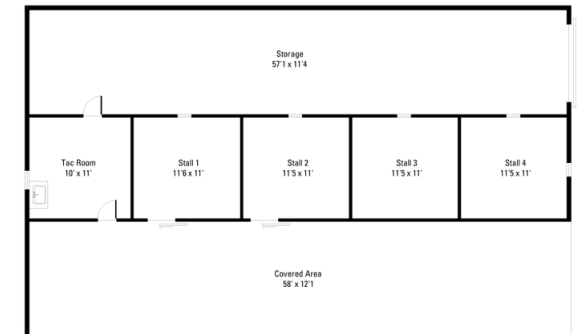
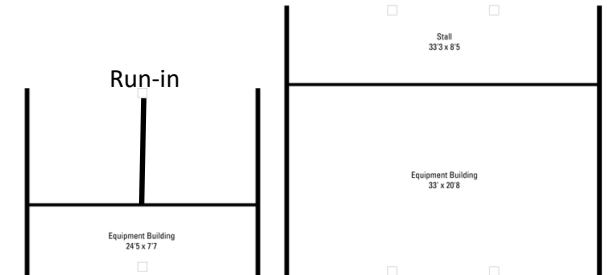
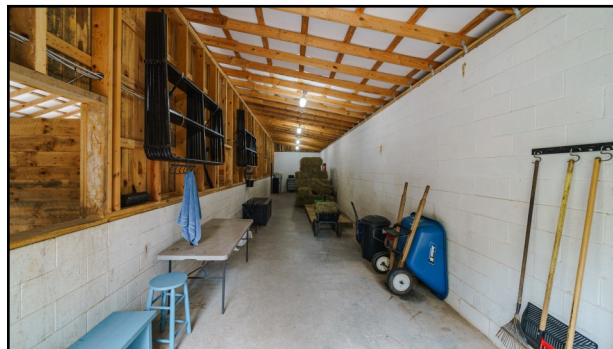
12' Covered Overhang w/Mats and Ceiling Fans

Grooming Hitching Post w/Mats

### 4-Stall Run-In Shed

Individual Open Stalls to Dry Lots with Access to Pastures

Stall Mats



## Farm Features (Cont'd)

---

3 Pastures w/Track Paddocks (Allows horses to get out yet limits grass intake)

3 Board or Ramm Electric Tape Fencing

3 Dry Lots

All Stalls and Dry Lots Can be Opened to Pastures (Interlocking Gates)

All Pastures Have Access to Water (Frost-Free Water Spigots)

Perimeter Trail on Property

Access to Community Trails

Manure Compost Pit

3-Bay Truck/Trailer/Tractor Building (Height allows Taller Vehicles)

Three Bay Small Farm Equipment Building

Trailer Parking w/30 Amp Power



# Mechanicals

---

Full House & Barn Generac Generator  
(Propane, Buried Tank)

2 HVAC Systems

Electric Water Heater

Water Filtration System

Well

Septic

IAT & T Internet

A-1 Termite and Pest Control



## The Coves Mountain River Club

Imagine a mountain country estate with 12-17+ acres of pristine property and over one-half mile of river frontage located in a 3,200-acre gated community in the foothills of the Blue Ridge Mountains. Located just outside Lenoir, NC is The Coves Mountain River Club, a community designed to encourage outdoor activities in an unmatched natural environment. Views of Table Rock Mountain and Grandfather Mountain and 4 natural waterfalls are just some of the spectacular backdrops. Five miles of Johns River frontage offers fishing, tubing, swimming, canoeing, and kayaking. 20 miles of hiking trails and 13 miles of horse trails allow you to easily absorb the serene natural beauty. This well-planned community adds its own amenities to those provided by nature, including the 6,000 sq. ft. Pisgah Mountain Lodge with wrap around veranda, infinity-view pool, and fitness center. Other conveniences include pickleball courts, 2 equestrian centers, community garden, vineyard, community ponds, picnic pavilions and a Helipad.



# The Coves

## Mountain River Club

---

3,200 Acres

Five Landscaped Gated Entrances

Paved Roads

5 Miles of Johns River Frontage

Kayaking, Tubing, Swimming, Canoeing and  
Fishing

Community Ponds

20 Miles of Hiking Trails (13 miles are Horse  
friendly)

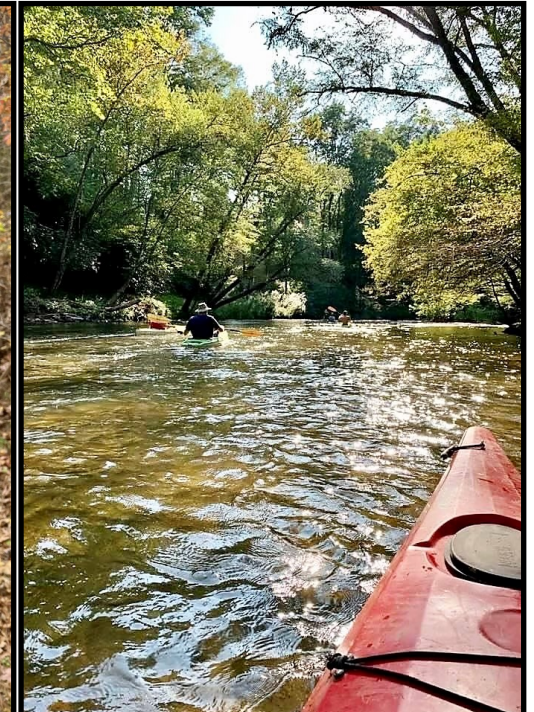
4 Cascading Waterfalls

4 Community Parks

Coleton's Swimming Hole

Picnic Pavilions

Heli-Pad



# Pisgah Mountain Lodge

---

6,000 Sq Ft of Community Activity Space

Rustic Cathedral Ceilings w/Wood Beams and Walls of  
Windows Overlooking the Blue Ridge Mountains

Large Rock Fireplace

Entertaining Kitchen

Reading Room

Billiards Loft

Lower Level Exercise Room w/Equipment

Locker Room w/Showers

Yoga/Game Room w/Foosball and Ping Pong

Lending Library

8,000 Sq Ft of Outdoor Living Room, Patios, Covered Porches  
and Verandas Overlooking Untouched Protected Forest  
Lands and Mountains Ridges



## Wyatt's Landing

Activity Shed  
2 Pickleball Courts  
Covered Pavilion

## Round Mountain Ranch

8-Stall Barn w/Tack Room & Restroom  
8 Acres of Board Fenced Pastures  
Trailer Parking  
Access to Trails  
Isabell's Community Garden  
Evelyn's Vineyard

## New Husband's Creek Barn

New 6-Stall Barn



5710 Wolf Ridge Way  
Lenoir, North Carolina 28645

Julie R. Breedlove • 704.661.9619  
Julie@breedlovecarolinas.com



Premier

**Sotheby's**  
INTERNATIONAL REALTY

Charlotte Office

532 Governor Morrison Street #C110  
Charlotte, NC 28211

*Sotheby's International Realty® and the Sotheby's International Realty logo are registered service marks used with permission. Each office is independently owned and operated. Equal Housing Opportunity. If your property is listed with a real estate broker, please disregard. It is not our intention to solicit the offerings of other real estate brokers. We are happy to work with them and cooperate fully. Property information herein is derived from various sources that may include, but not limited to county records and the multiple listing service and it may include approximations. Although this information is believed to be accurate, it is not warranted and should not be relied upon without personal verification.*