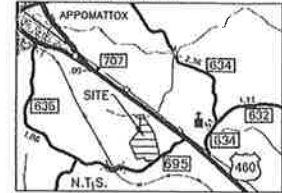


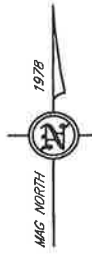
WILLIAM W. DICKERSON, JR.

LAND SURVEYOR  
500 Court Street P.O. Box 112  
Appomattox, Virginia 24522

LOCATION MAP



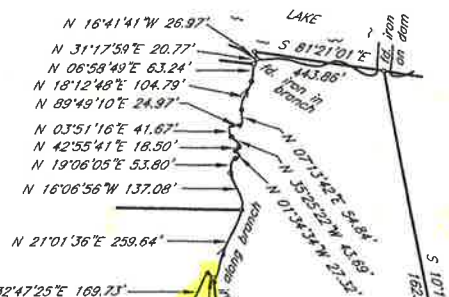
- NOTES: 1. ALL EASEMENTS, ENCROACHMENTS, AND/OR IMPROVEMENTS MAY NOT BE SHOWN  
2. THIS PLAT HAS BEEN PREPARED WITHOUT BENEFIT OF A TITLE REPORT  
3. THIS PLAT IS BASED ON A CURRENT FIELD SURVEY  
4. T.M. NO. 77-A-20 & 344



STEPHEN E. KING  
D.B. 276 977  
PLAT P.C. 1-57F  
T.M. NO. 77-A-118

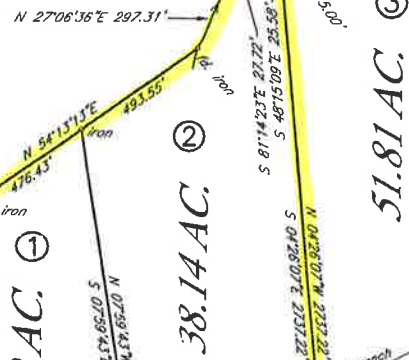
BETTY A. WOODARD & LINDA A. STEWART  
D.B. 191 P. 521  
T.M. NO. 77-A-12

Curve	Radius	Length	Delta	Chord	Chord Bear.
C1	706.44'	283.62'	23°00'11"	281.72'	S 63°14'34" W
C2	1170.92'	281.40'	13°46'11"	280.73'	S 67°51'34" W
C3	1612.02'	248.06'	8°49'00"	247.81'	S 65°22'58" W
C4	520.67'	271.08'	28°49'51"	268.03'	S 84°42'24" W



C. DOUGLAS BRANCH  
D.B. 198 P. 91  
PLAT P.B. 12 P. 2  
T.M. NO. 77-6-1

MATT & VIRGINIA A. MASATIS  
D.B. 284 P. 1031  
PLAT P.C. 1-38D  
T.M. NO. 77-A-21



V.R. & KATHERINE L. CLIFTON  
D.B. 234 P. 340  
PLAT P.B. 12 P. 2  
T.M. NO. 77-6-3

N. & S. RAILWAY

CLARENCE D. FRANKLIN  
INST. NO. 200402527  
PLAT P.C. 1-53G  
T.M. NO. 77-A-20A

26.00 AC. ①

SANDY & JOSEPHINE HAMLET  
D.B. 127 P. 196  
PLAT D.B. 127 P. 199  
T.M. NO. 77-A-35

RITA S. HOLMAN  
D.B. 231 P. 100  
T.M. NO. 77-2-1

RUSSELL & LILLIE A. WILEY  
D.B. 119 P. 32  
T.M. NO. 77-3-1

WILLIAM CLAYTON & SHIRLEY T. MOSLEY  
D.B. 136 P. 326  
T.M. NO. 77-3-2

WILLIE J. & SARAH H. WRIGHT  
D.B. 118 P. 19  
T.M. NO. 77-3-3

SHARAH J. JOHNSON  
D.B. 137 P. 215  
T.M. NO. 77-3-4

WILLIAM P. & ANN BAKER  
D.B. 85 P. 566  
T.M. NO. 77-A-33

STATE ROUTE NO. 695  
MOUNTAIN CUT ROAD  
50 ft. R/W

Plat Recorded with Instrument # 200102435  
On 9-14-07 at 9:30 a.m.  
Teste: Barbara B. Williams Clerk  
By: Charles A. Taylor, Deputy Clerk



APPROVED:  
*John E. Koneck*  
SUBMISSION AGENT - APPOMATTOX COUNTY

SCALE: 1 IN. = 300 FT.  
**115.95 ACRES**

SURVEYED FOR: C. DOUGLAS BRANCH  
SOURCE OF TITLE: C. DOUGLAS BRANCH  
D.B. 198 P. 615 & 617

CLOVER HILL DISTRICT APPOMATTOX COUNTY  
VIRGINIA

DECEMBER 21, 2006  
DIVIDED JULY 11, 2007



Agricultural Subdivision Exemption PLAT APPROVAL VOID  
IF NOT RECORDED  
BY JAN 16 2008