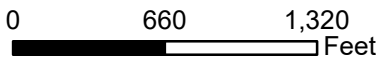


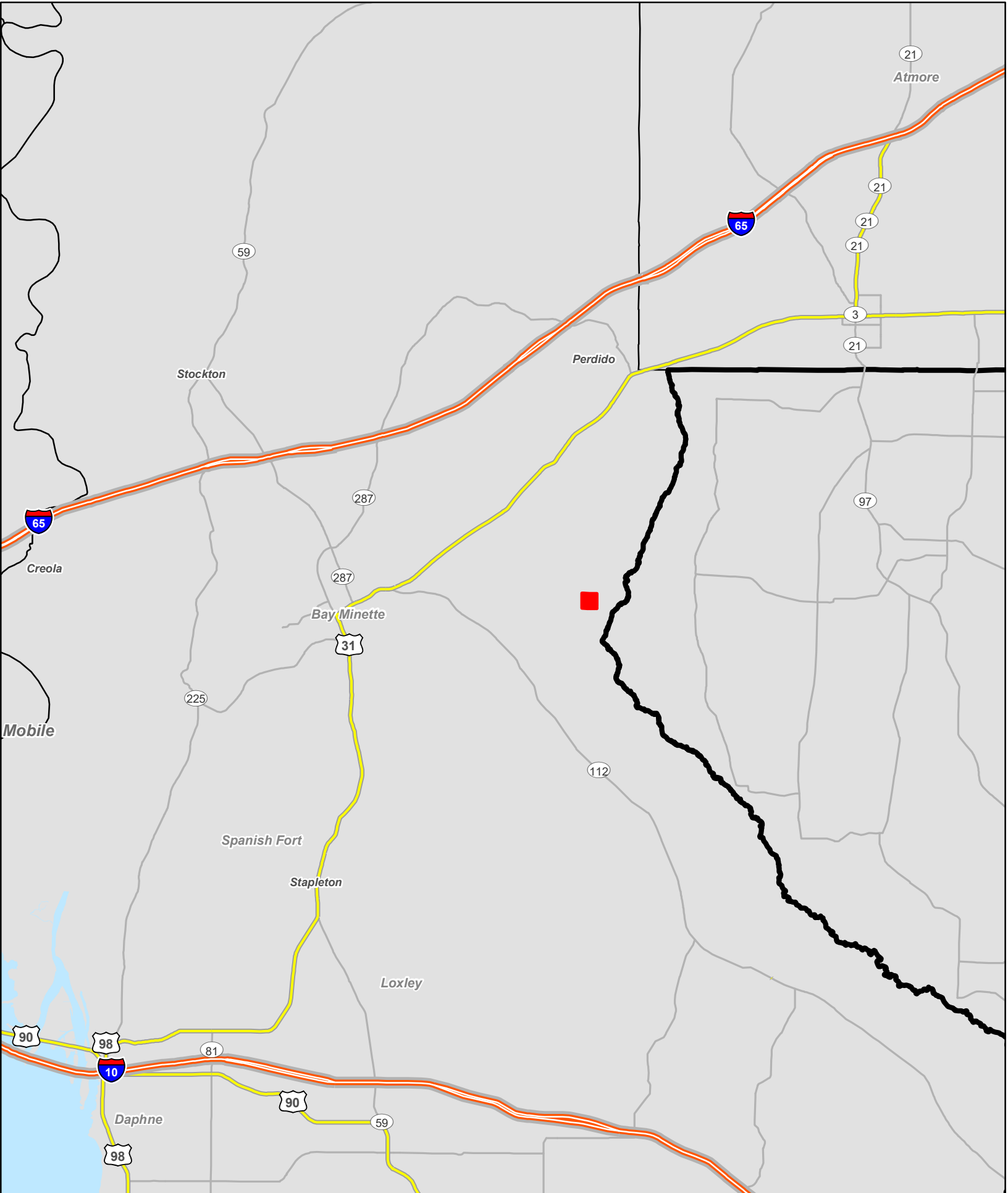
USDA, USGS The National Map: Orthomagery. Data refreshed June, 2024.



**Gerber Tract**  
**160+- Acres**  
**Baldwin County, AL**



Map is for illustrative purposes. Accuracy is neither warranted nor guaranteed.

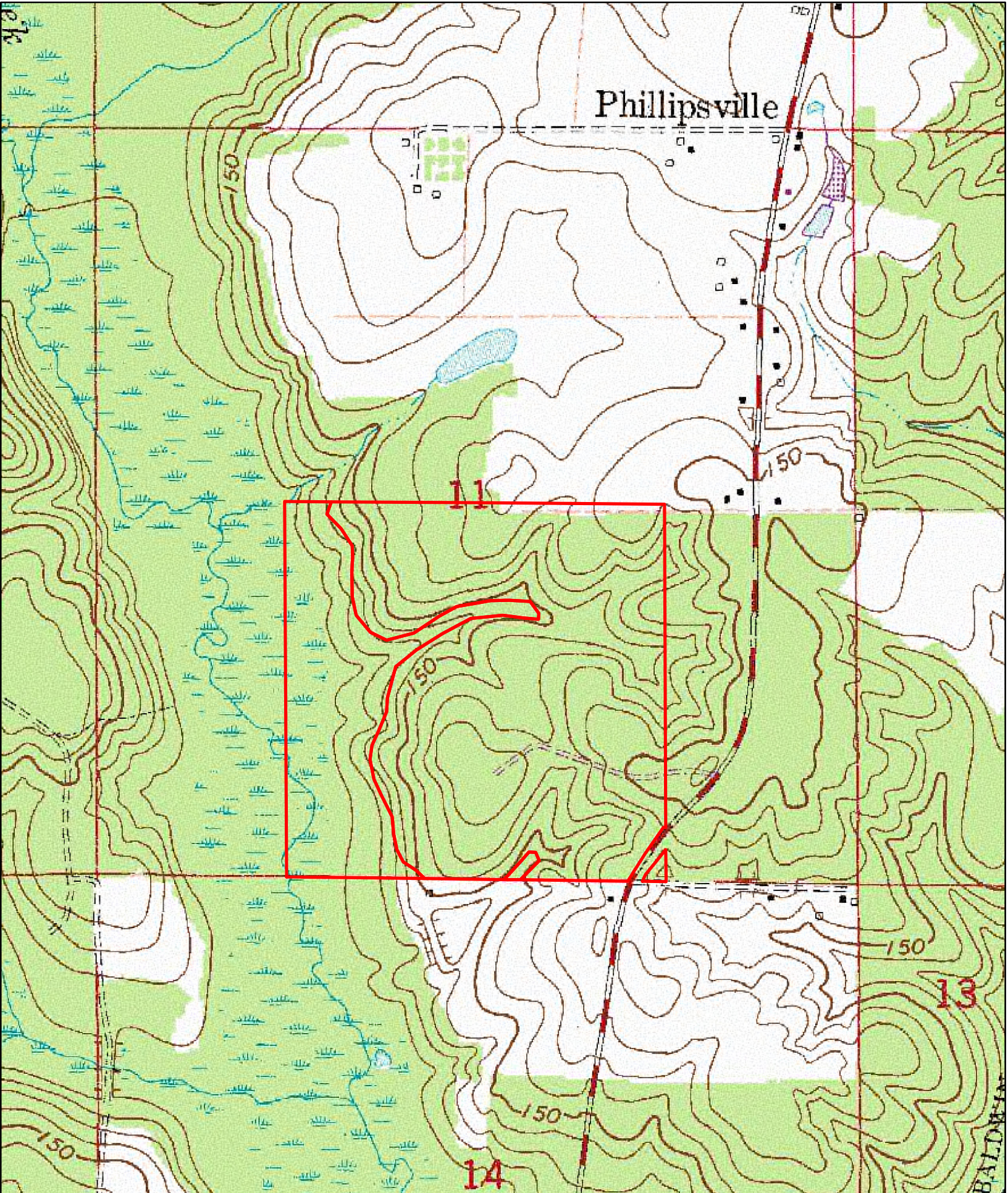


0 1 2  
Miles

**Gerber Tract**  
**160+- Acres**  
**Baldwin County, AL**

**Larson & McGowin**  
PROPERTIES

Map is for illustrative purposes. Accuracy is neither warranted nor guaranteed.



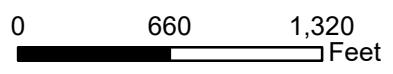
Phillippsville

11

13

14

BALDWIN



**Gerber Tract**  
**160+- Acres**  
**Baldwin County, AL**

**Larson & McGowin**  
PROPERTIES

Map is for illustrative purposes. Accuracy is neither warranted nor guaranteed.