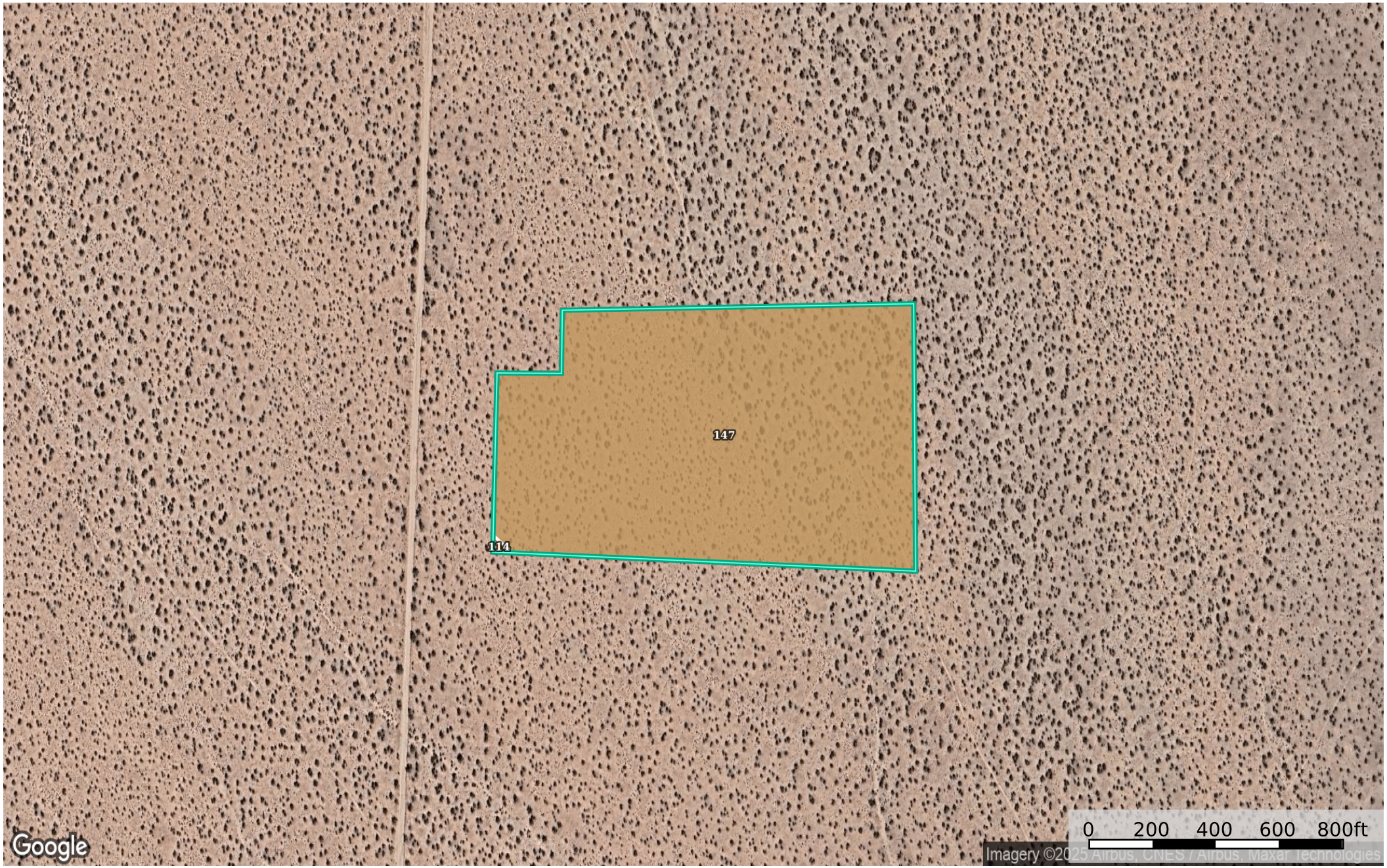



19.35 Acres - California City - Kern, CA - 271-050-24-00-1
California, 19.35 AC +/-



Google

Imagery ©2025 Airbus, CNES / Airbus, Maxar Technologies
0 200 400 600 800ft

 Boundary

 The information contained herein was obtained from sources deemed to be reliable. Land id™ Services makes no warranties or guarantees as to the completeness or accuracy thereof.

Boundary 19.75 ac

SOIL CODE	SOIL DESCRIPTION	ACRES	%	CPI	NCCPI	CAP
147	Hi Vista sandy loam, 2 to 9 percent slopes	19.72	99.85	0	5	7e
114	Cajon loamy sand, 0 to 5 percent slopes	0.03	0.15	0	5	7e
TOTALS		19.75(*)	100%	-	5.0	7.0

(*) Total acres may differ in the second decimal compared to the sum of each acreage soil. This is due to a round error because we only show the acres of each soil with two decimal.

