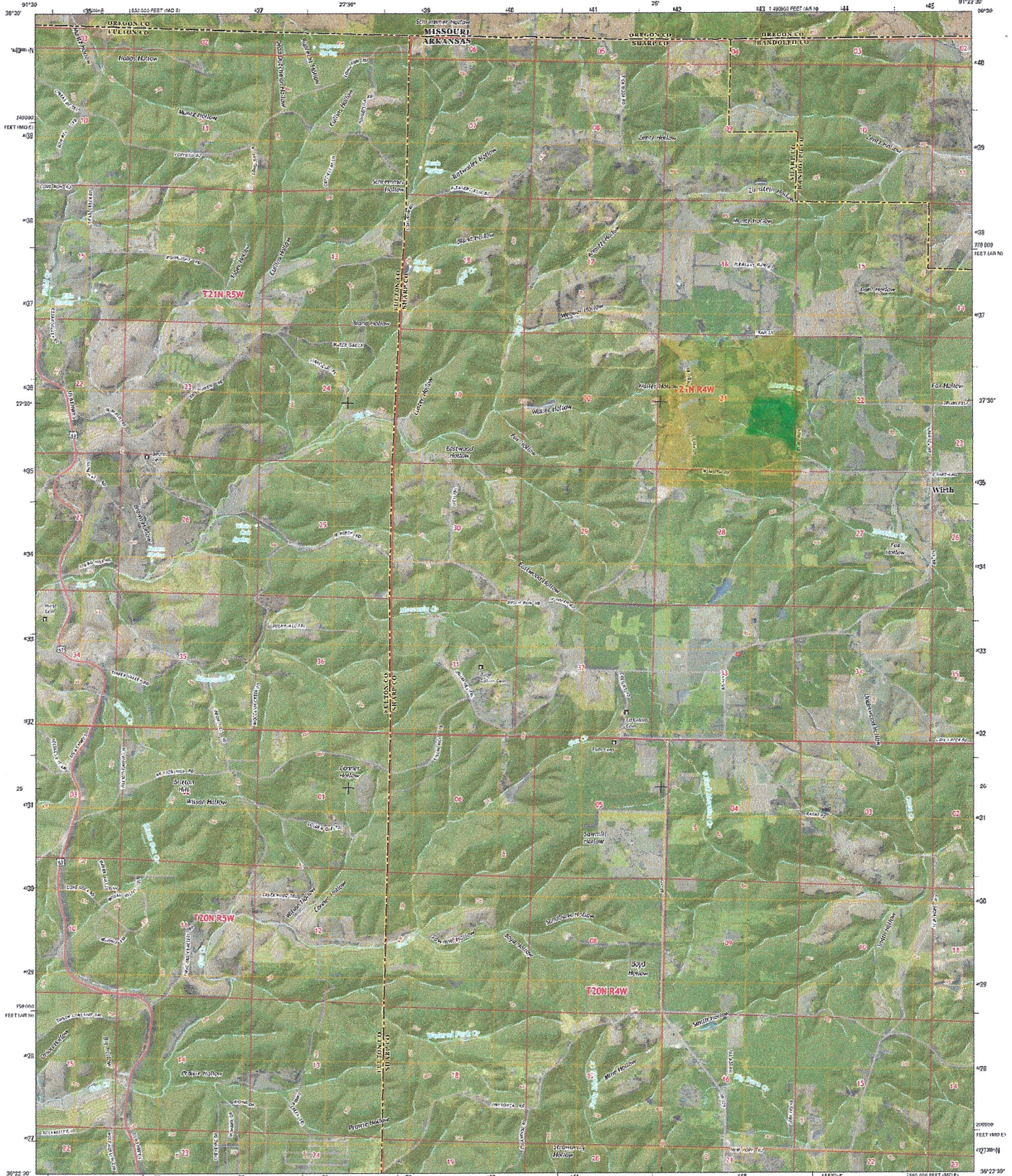




U.S. DEPARTMENT OF THE INTERIOR  
U.S. GEOLOGICAL SURVEY



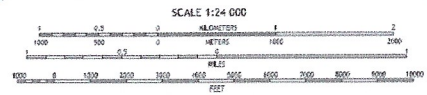
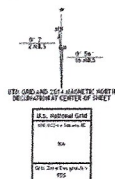
WIRTH QUADRANGLE  
ARKANSAS-MISSOURI  
7.5-MINUTE SERIES



Produced by the United States Geological Survey  
North American Datum of 1983 (NAD83)  
World Geodetic System of 1984 (WGS84) Projection and  
1:250,000-scale Universal Transverse Mercator Zone 15  
G 500,000 Scale, Arkansas Coordinate System of 1983 (AKS83)  
Residual Coordinate System of 1983 (RCS83) used

This map is not a legal document. Sources may be  
generalized for this map scale. Printed and with geographic  
coordinates may not be shown. Crown permitted before  
using on private lands.

Map	USGS	July 2010
Scale	1:24,000	2010
Map	USGS	2010
Hydrography	USGS	2010
Contour	USGS	2010
Boundary	USGS	2010
Public Land Survey System	USGS	2010



ROAD CLASSIFICATION

Expressway	Local Connector
Secondary Hwy	Local Road
Road	HOV
State Route	US Route
	State Route

1	2	3	1 Foot
4	5	6	3 Feet
7	8	9	6 Feet
10	11	12	12 Feet

WIRTH, AR-MO  
2014



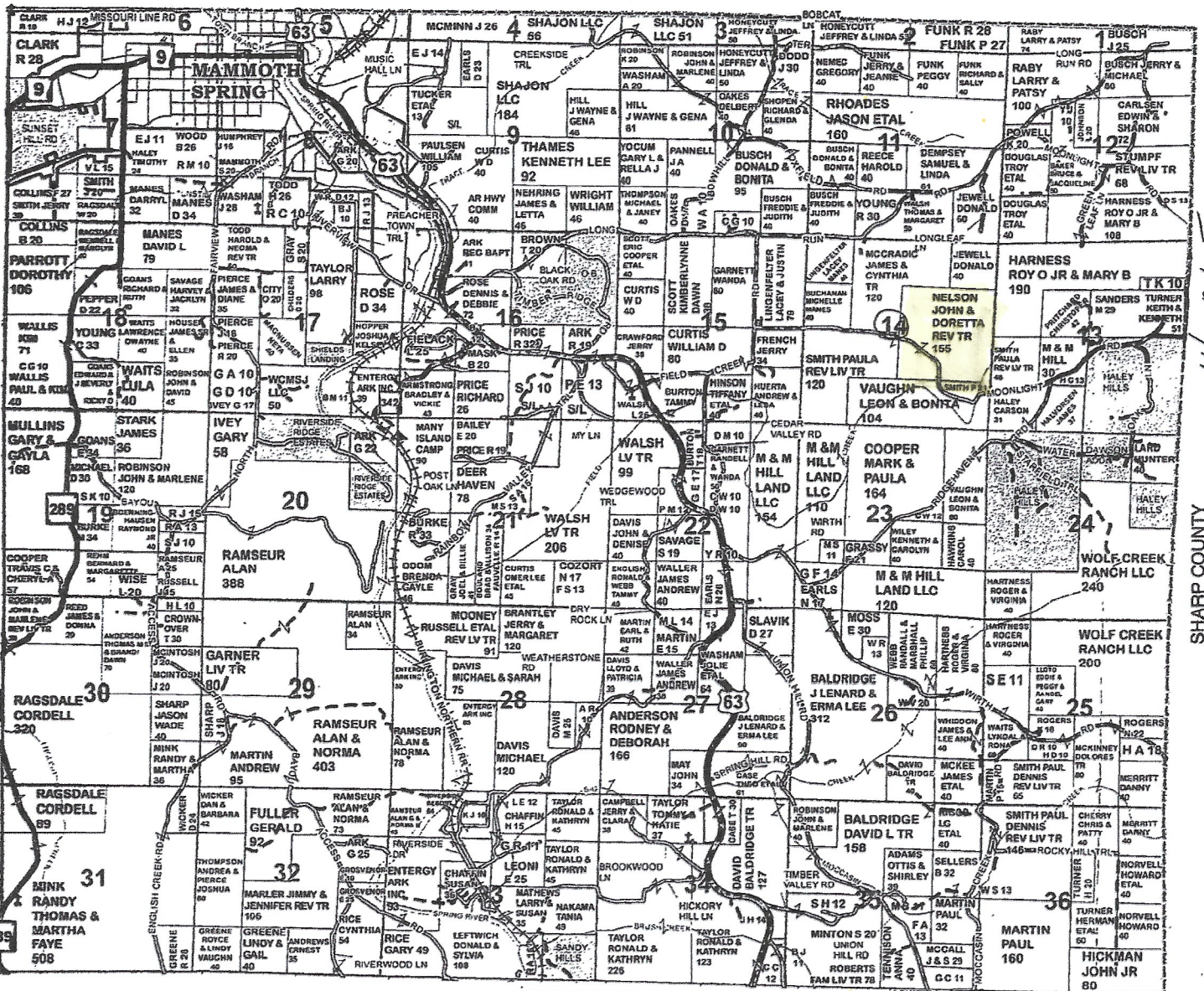
"In the name of  
the bee  
And of the  
butterfly  
And of the  
breeze, amen!"

- Emily Dickinson

# Township 21N - Range 5W

Copyright © 2018 Mapping Solutions

## OREGON COUNTY, MISSOURI



14-21-5  
Nelson

SHARP COUNTY

SEE PAGE 19

SEE PAGE 35

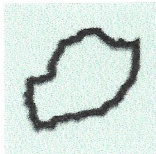
# Tober Hollow



## Valley

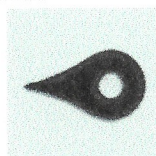
Linear depression in the Earth's surface that generally slopes from one end to the other.

Related terms: barranca, canyon, chasm, cove, draw, glen, gorge, gulch, gulf, hollow, ravine



## County

[Fulton County, Arkansas](#)



## GPS Coordinates

Latitude, Longitude:

36.4697851°, -91.4754171°



## Elevation

659 ft. (201 m.)

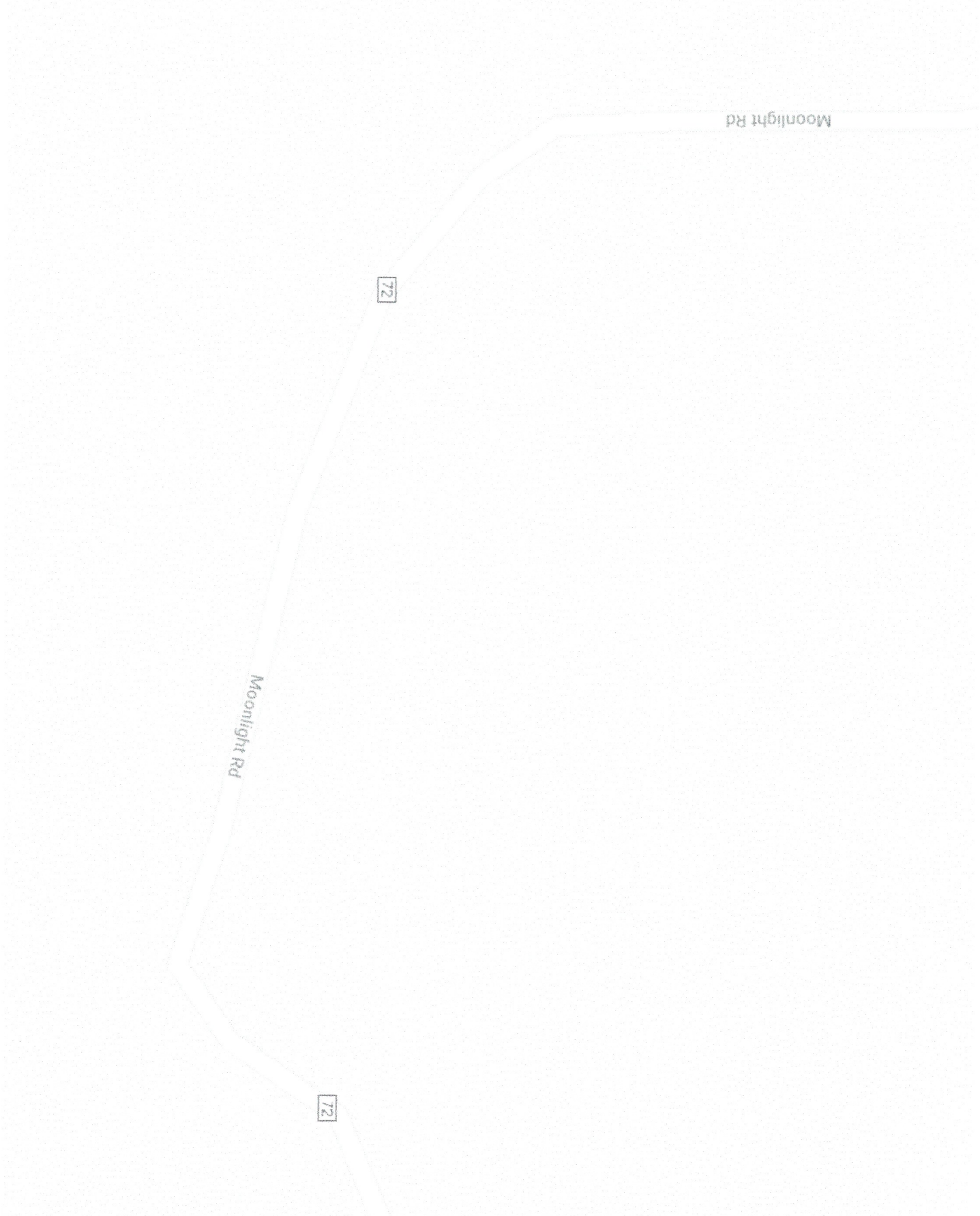
Tober Hollow

Moonlight Rd

72

Moonlight Rd

72





Debra Schilling Smith <debra@coveringtheozarks.com>

**Re: Tom and Doretta nelson Trust**

1 message

**Amanda Tusher** <amanda@coveringtheozarks.com>  
To: Debra Schilling Smith <debra@coveringtheozarks.com>

Fri, May 7, 2021 at 4:09 PM

A couple of selling points Tober cave is on the property is verified by the cave people can't remember the name for sure USGS site I believe you can see the entrance, mature timber hasn't been timbered since 1988 and was only select cut then

**Amanda Tusher**

Realtor - Real Tree Land Pro  
cell#417-255-3498  
Office#417-256-1000  
3498 US Hwy N 63  
West Plains Mo  
[Amanda@coveringtheozarks.com](mailto:amanda@coveringtheozarks.com)



**Missouri Ozarks  
Realty Inc.**

On Fri, May 7, 2021 at 3:27 PM Amanda Tusher <amanda@coveringtheozarks.com> wrote:

**Amanda Tusher**

Realtor - Real Tree Land Pro  
cell#417-255-3498  
Office#417-256-1000  
3498 US Hwy N 63  
West Plains Mo  
[Amanda@coveringtheozarks.com](mailto:amanda@coveringtheozarks.com)



**Missouri Ozarks  
Realty Inc.**