



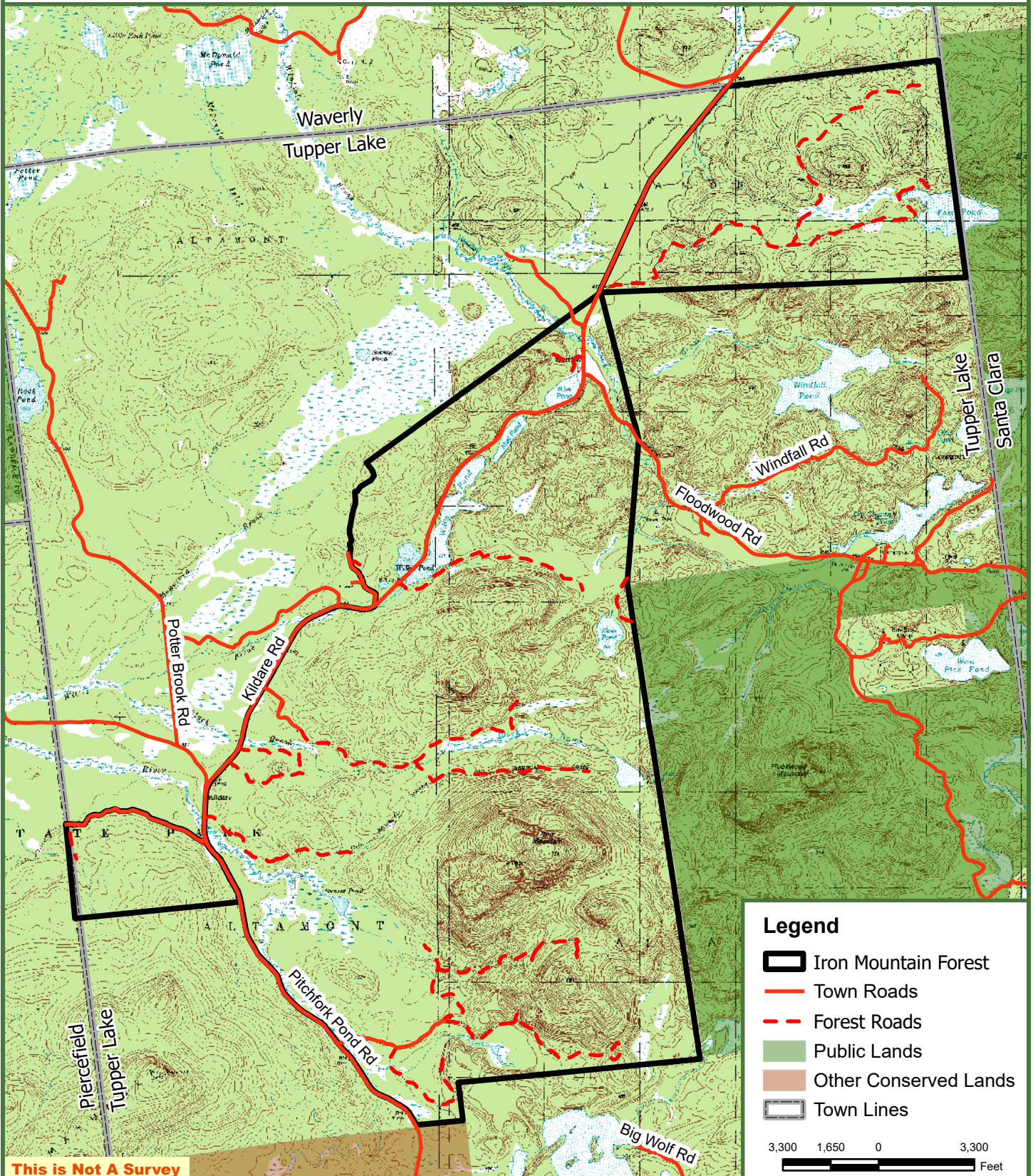
Iron Mountain Forest

8,769 Tax Acres

Tupper Lake, Franklin County, NY



**Fountains
Land**
AN F&W COMPANY



This is Not A Survey

Legend

-  Iron Mountain Forest
-  Town Roads
-  Forest Roads
-  Public Lands
-  Other Conserved Lands
-  Town Lines

3,300 1,650 0 3,300
Feet

Map produced from the best available information including town tax maps, hand held GPS data, aerial photography and reference information obtained from publicly available GIS sources, and the owner. Boundary lines portrayed on this map are approximate and could be different than the actual location of boundaries found in the field.