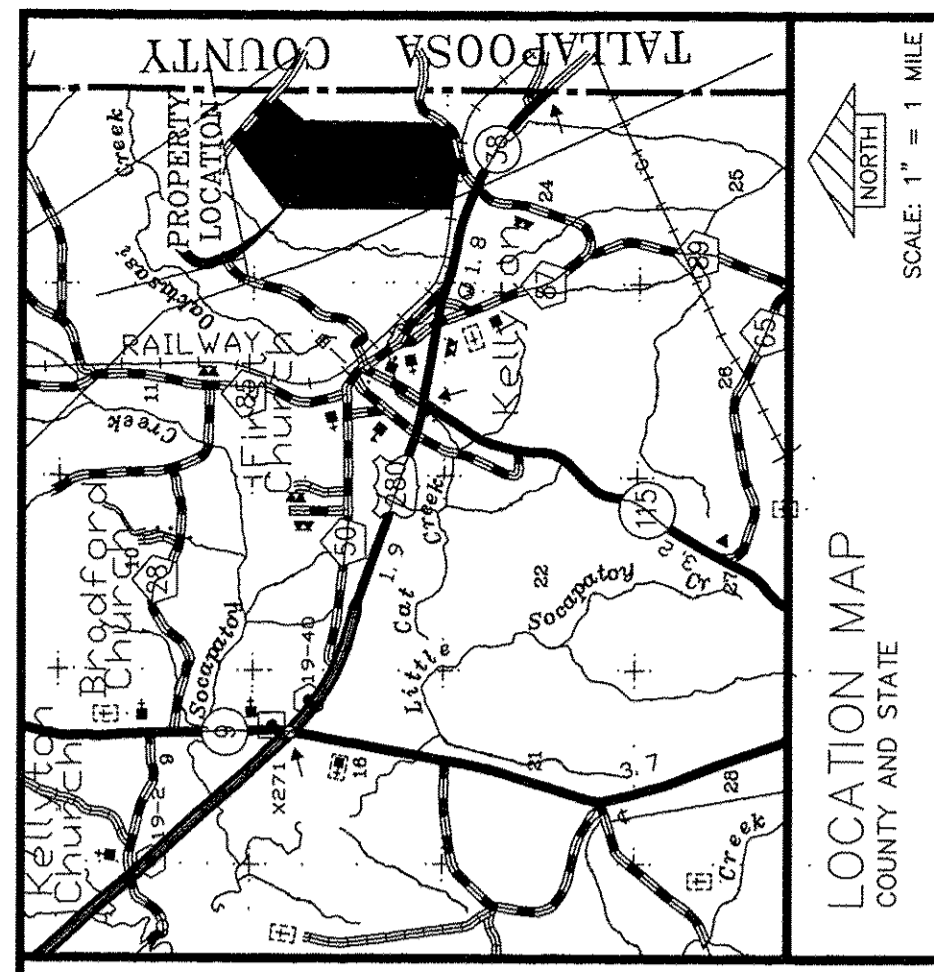


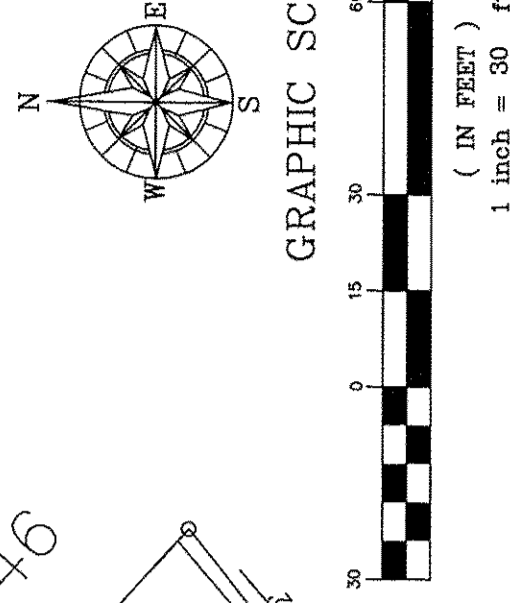
**BOUNDARY SURVEY  
FOR 331.26 ACRES  
MORE OR LESS**

LOCATED IN THE SOUTH 1/2 OF SECTION 12, SECTION 13,  
AND THE NW 1/4 OF THE NE 1/4  
OF SECTION 24

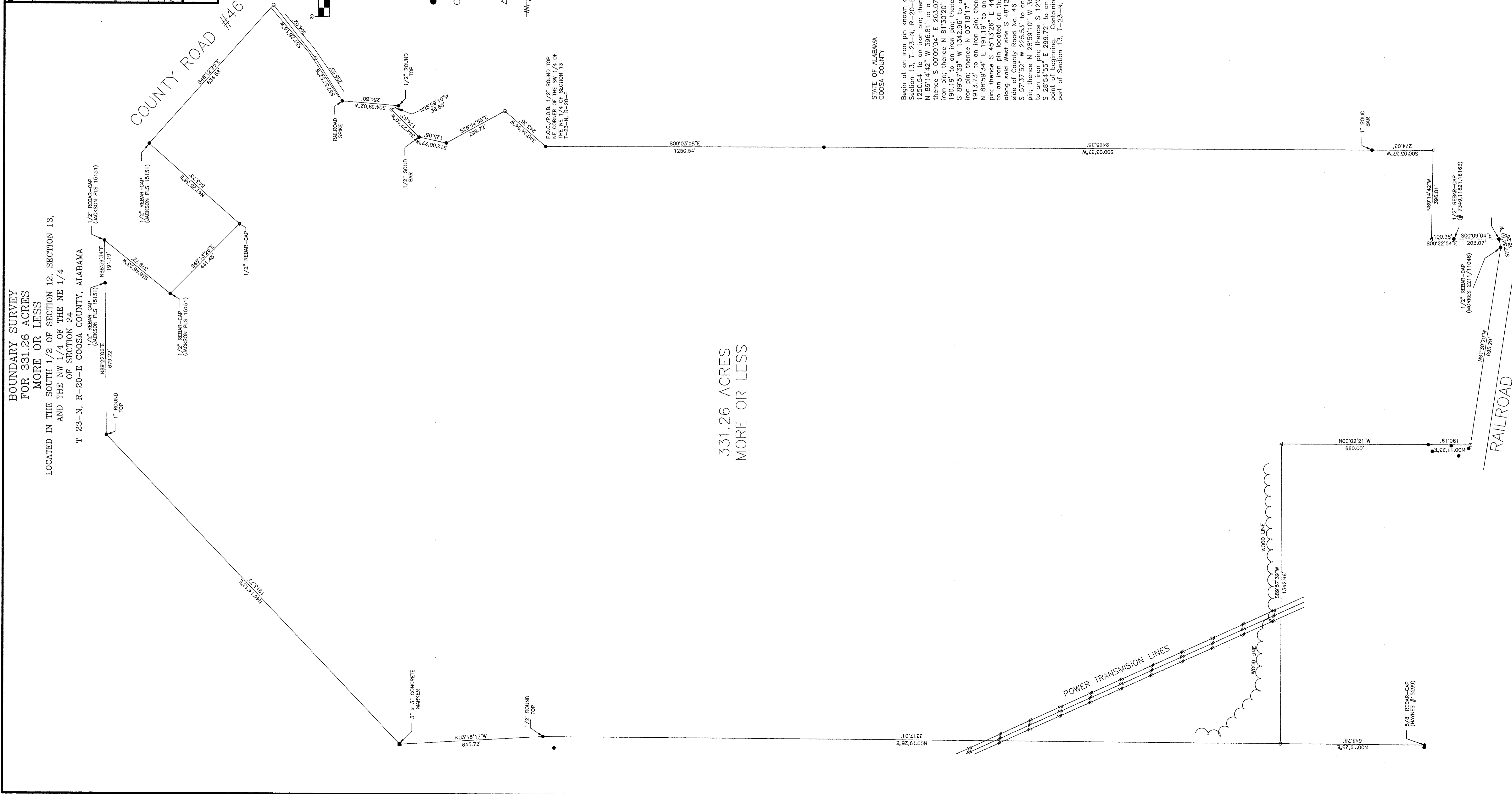
T-23-N, R-20-E COOSA COUNTY, ALABAMA



LOCATION MAP  
COUNTY AND STATE  
SCALE: 1" = 1 MILE



- LEGEND:**
- FOUND IRON PIN
  - SET IRON PIN (5/8" REBAR CAPPED) W/# CA-00017-LS
  - △ CALCULATED POINT
  - ▲— POWER POLE / LINE / GUY



331.26 ACRES  
MORE OR LESS

STATE OF ALABAMA  
COOSA COUNTY

Begin at an iron pin known as the Northeast Corner of the SW 1/4 of the NE 1/4 of Section 13, T-23-N, R-20-E, Coosa County, Alabama; thence S 00°03'08\"/>

DATE: 9-25-07

**LARRY E. SPEAKS**  
ASSOCIATES  
CONSULTING ENGINEERS  
LAND SURVEYORS

535 HERRON STREET  
MONTGOMERY, AL 36104  
TEL-334/292-1091