

TOWN VIEW

San Acacio

142

142

142

159

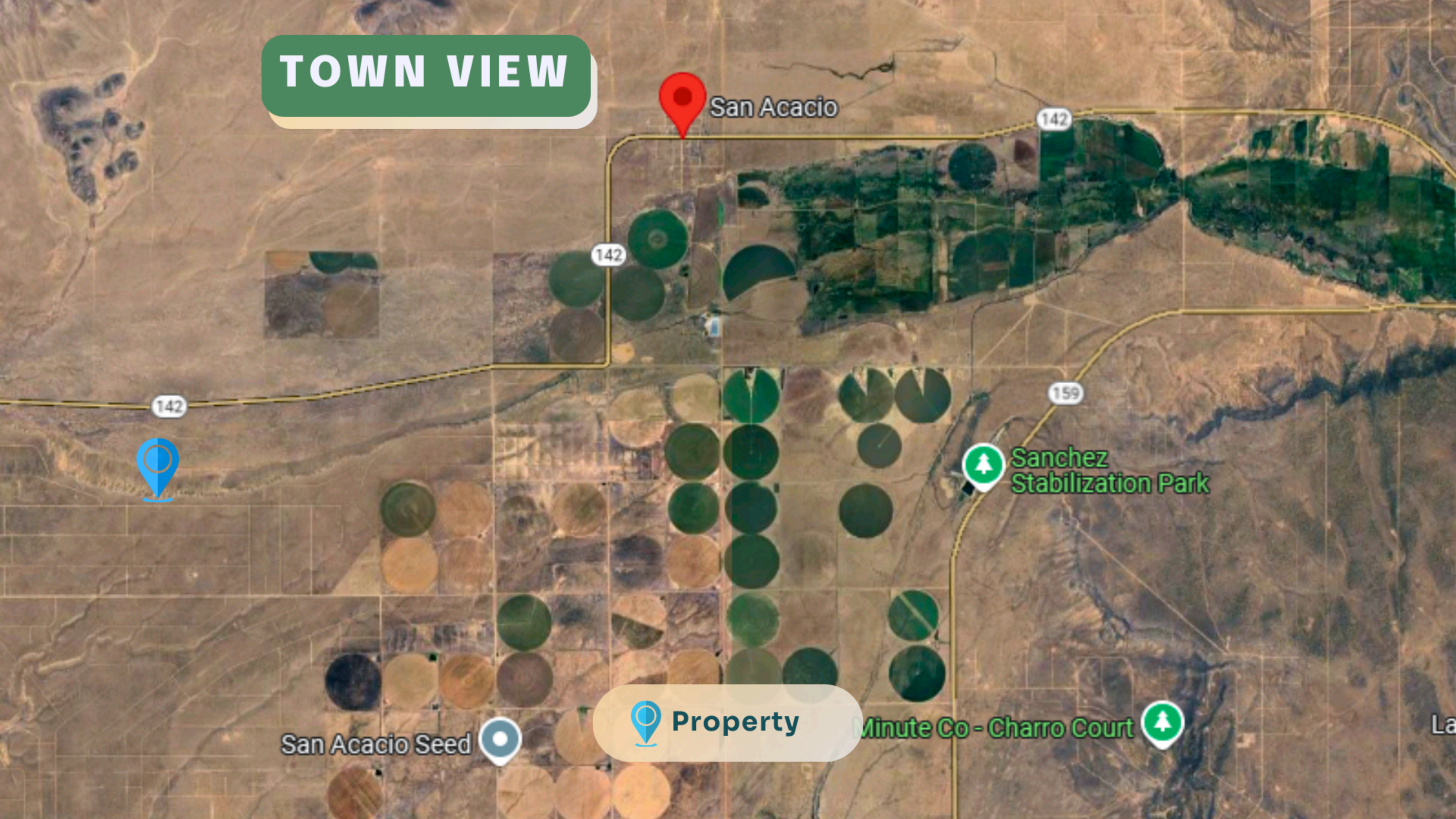
Sanchez Stabilization Park

Property

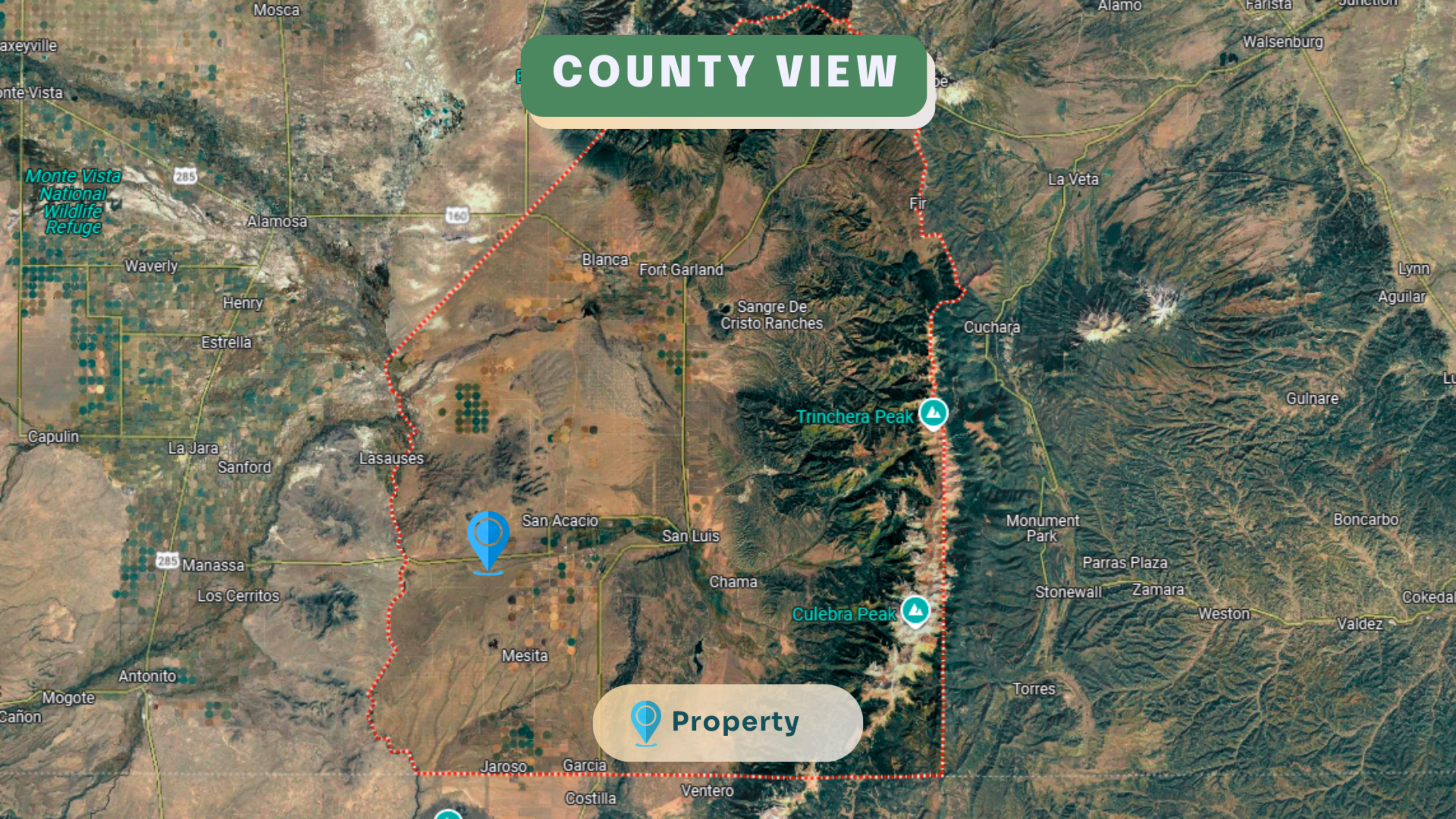
San Acacio Seed

Minute Co - Charro Court

La




COUNTY VIEW



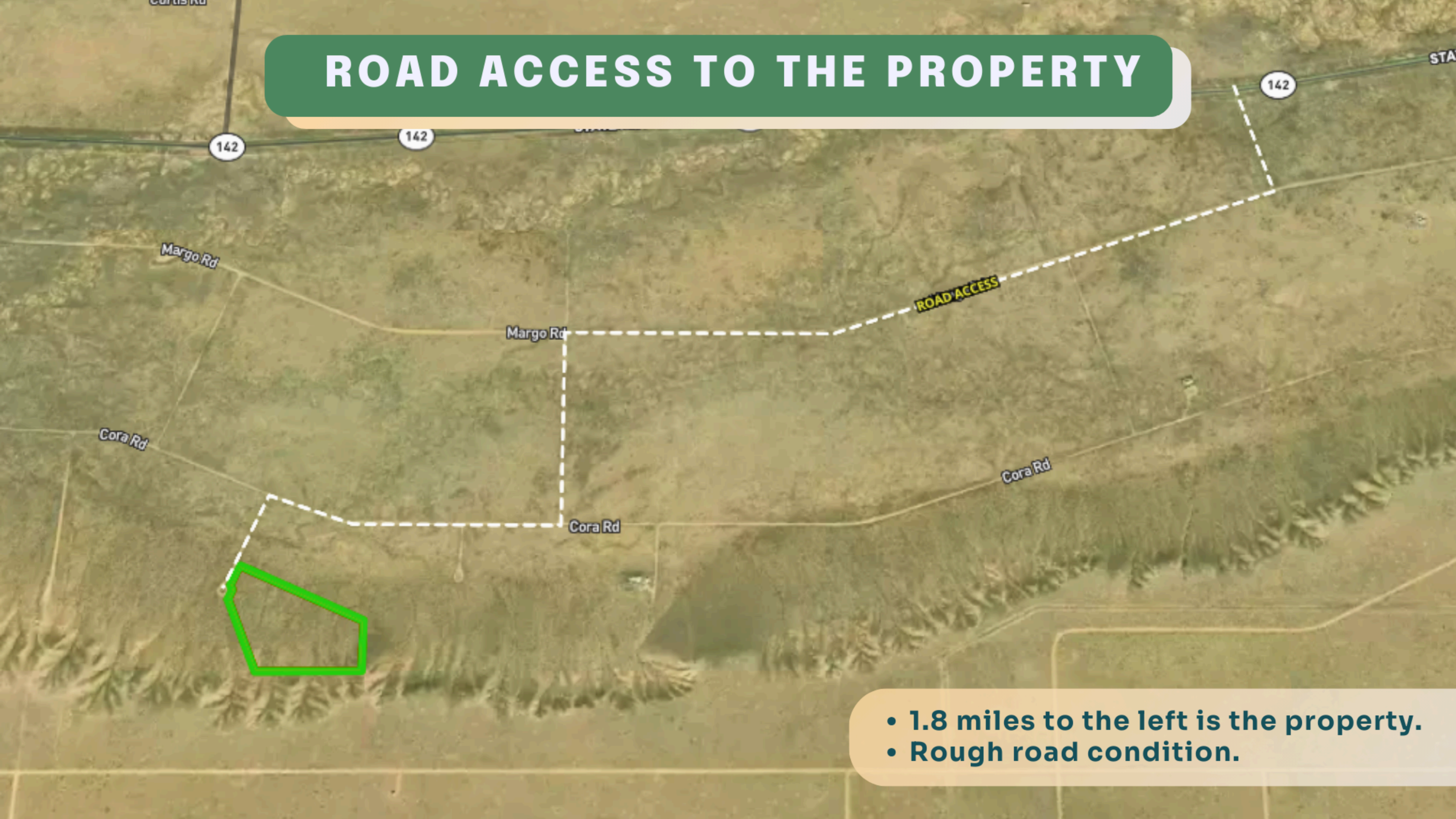
Property

KEY ACCESS ROUTES




The  property located along Highway 142 with access from both Colorado 159 and US Highway 285, making it highly accessible.


ROAD ACCESS TO THE PROPERTY




- 1.8 miles to the left is the property.
- Rough road condition.

DRIVING DIRECTIONS

 18 min
13.2 miles

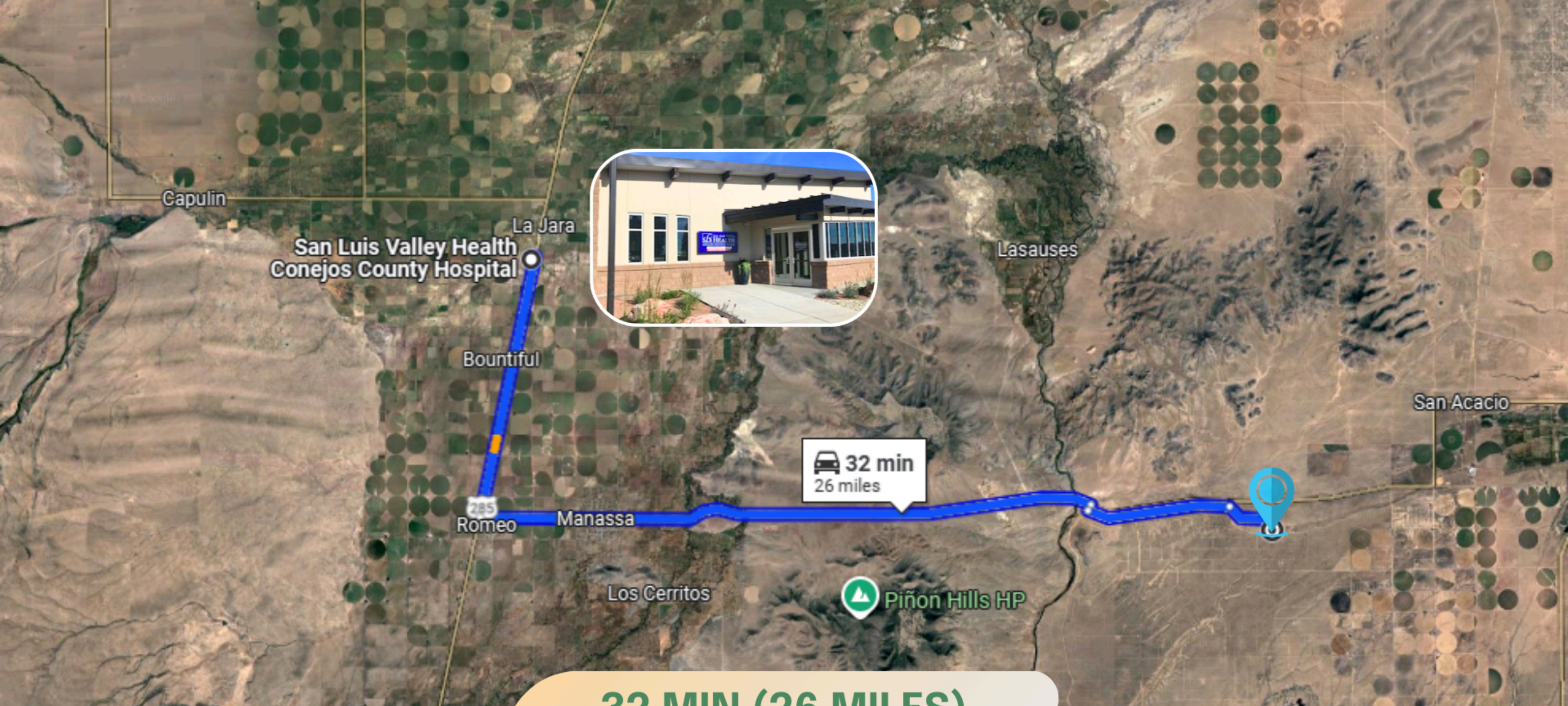
 23 min
15.9 miles

From the center of San Luis, take N Church Pl to CO-159 S, continue 4.6 miles, turn right on County Rd P for 4.2 miles, then follow CO-142 W for 1 mile and Margo Ave to Cora. The  property is on the left.



32 MIN (26 MILES)

THIS PROPERTY IS 51 MIN (42.9MILES) TO WALMART SUPERCENTER IN ALAMOSA, CO.



32 MIN (26 MILES)

**THIS PROPERTY IS 32 MIN (26 MILES) TO SAN LUIS VALLEY HEALTH CONEJOS COUNTY HOSPITAL
IN LA JARA, CO.**

