

# HIGHTOWER TRACT

PICKENS COUNTY, GA

708.5 +/- ACRES | TIMBER/RECREATIONAL LAND



MACALLAN  
REAL ESTATE

**HEATH MILLIGAN**  
PRINCIPAL

404.647.4999

heath@macallanre.com

1642 Powers Ferry Road SE, Suite 250  
Marietta, Georgia 30067



MACALLAN  
REAL ESTATE

**HEATH MILLIGAN**  
**PRINCIPAL**

404.647.4999

heath@macallanre.com

1642 Powers Ferry Road SE, Suite 250  
Marietta, Georgia 30067

# HIGHTOWER TRACT

PICKENS COUNTY, GA

708.5 +/- ACRES | TIMBER/RECREATIONAL LAND



## OPPORTUNITY

Macallan Real Estate is pleased to present for sale the Hightower Tract, 708.5 acres of beautiful timber and recreational land in the Blue Ridge Mountains, just north of Jasper. One of the largest parcels in Pickens County, this property lies in the far Northwest corner of Pickens County and straddles Gilmer County on the North end.

The Hightower Tract offers over 1.5 miles of paved road frontage on Big Ridge Road and several potential homesites with long-range views. Multiple access points and a maintained trail system throughout provide easy access to even the most remote parts of the property. The rolling topography is covered with a mixture of upland pine plantations and hardwood bottoms. The timber has been meticulously managed and presents the opportunity for future timber revenues.



**HEATH MILLIGAN**  
**PRINCIPAL**

404.647.4999  
heath@macallanre.com  
1642 Powers Ferry Road SE, Suite 250  
Marietta, Georgia 30067

# HIGHTOWER TRACT

PICKENS COUNTY, GA

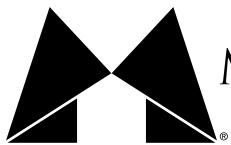
708.5 +/- ACRES | TIMBER/RECREATIONAL LAND



## PROPERTY FEATURES

- 708.5 +/- Acres
- Zoned Rural Residential in Pickens County
- Well Managed Timber Inventory
- Borders the Talking Rock Creek Resort
- Beautiful Rolling Topography
- Over 1.5 Miles of Paved Public Road Frontage
- Multiple Access Points
- Multiple Potential Homesites
- Fiber Internet Connectivity
- Long-Range Views
- Owner Will Subdivide

**Contact Broker for Pricing**



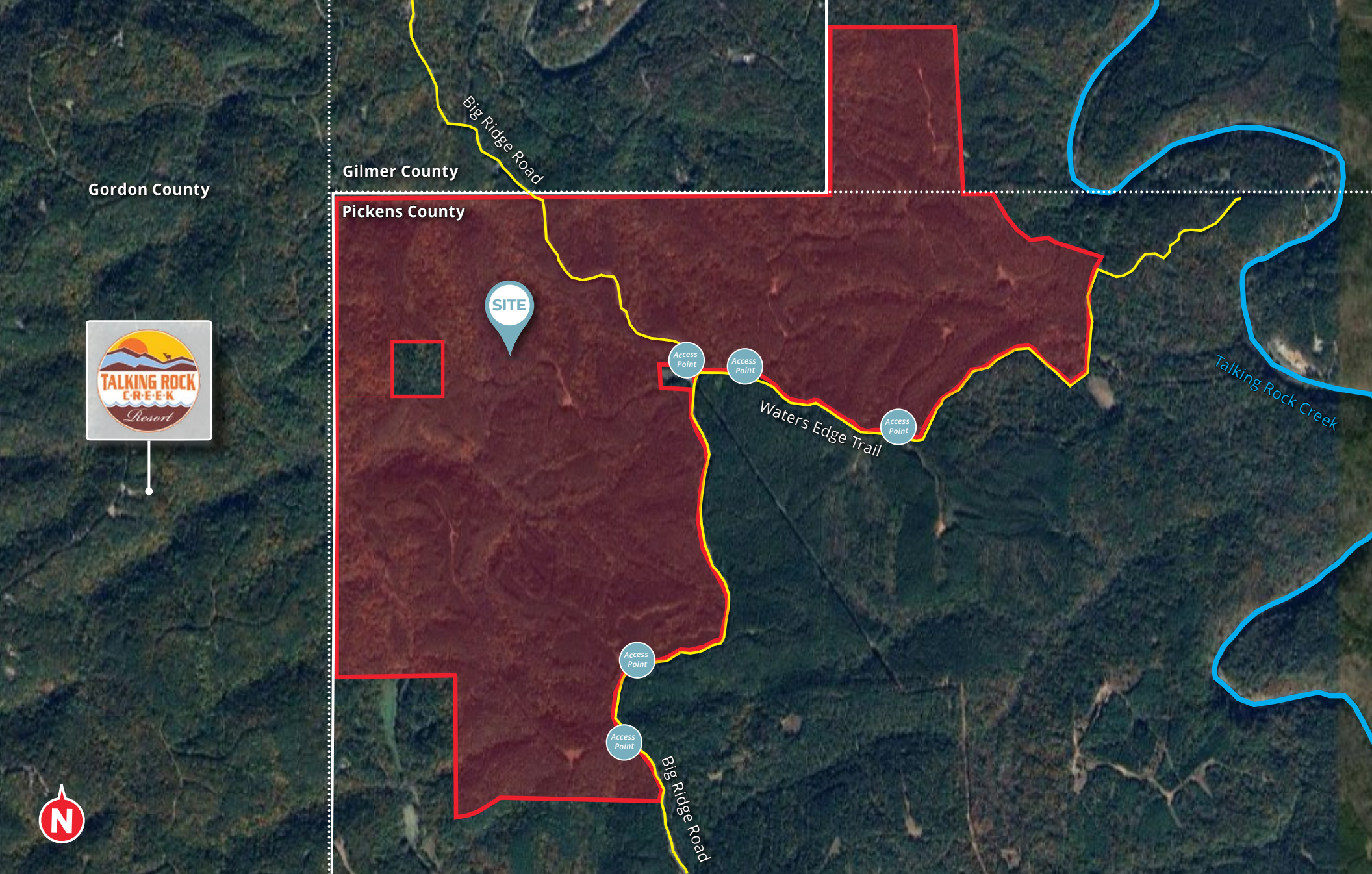
MACALLAN  
REAL ESTATE

**HEATH MILLIGAN**  
PRINCIPAL

404.647.4999

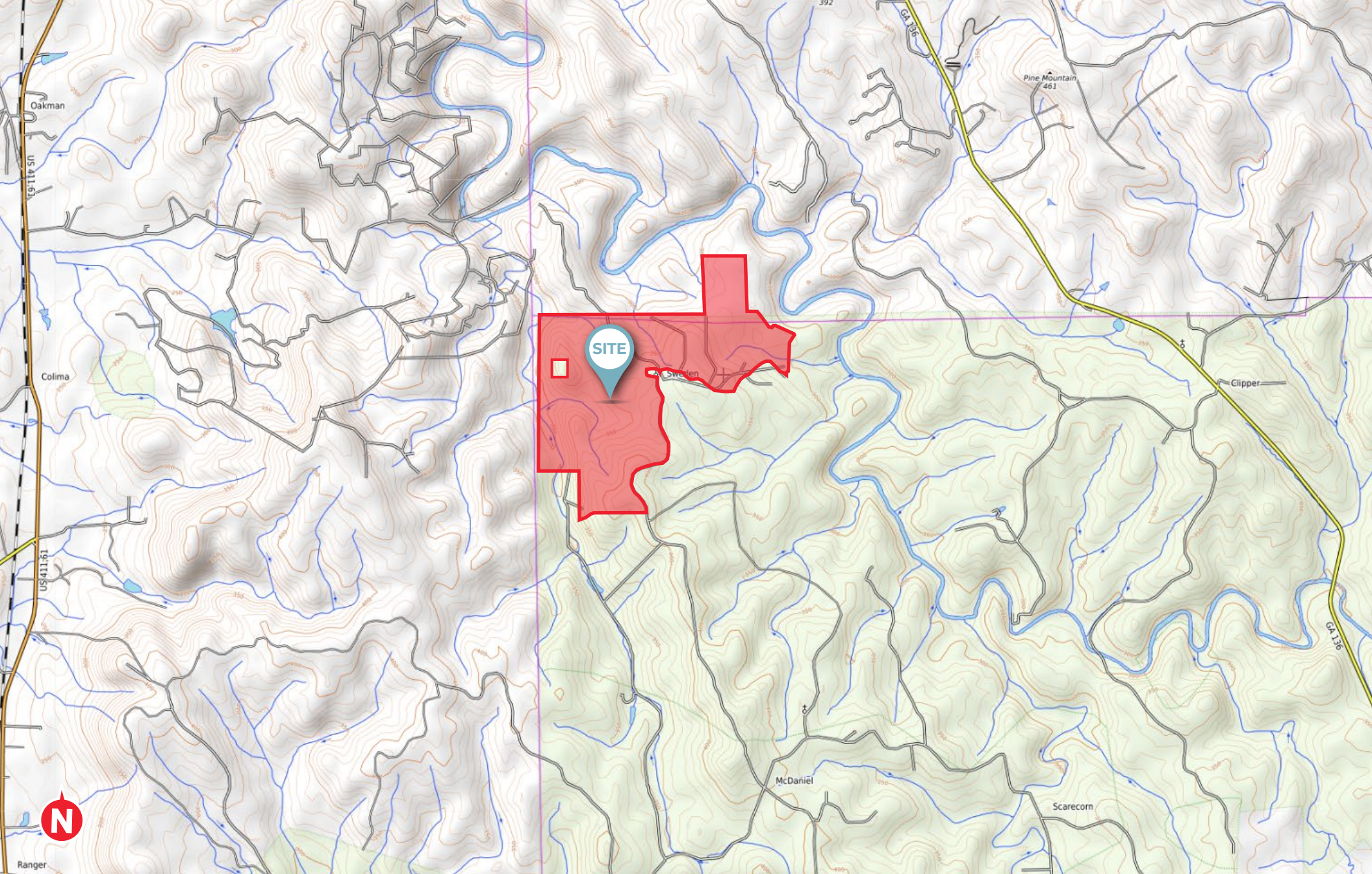
heath@macallanre.com

1642 Powers Ferry Road SE, Suite 250  
Marietta, Georgia 30067



**MACALLAN**  
REAL ESTATE

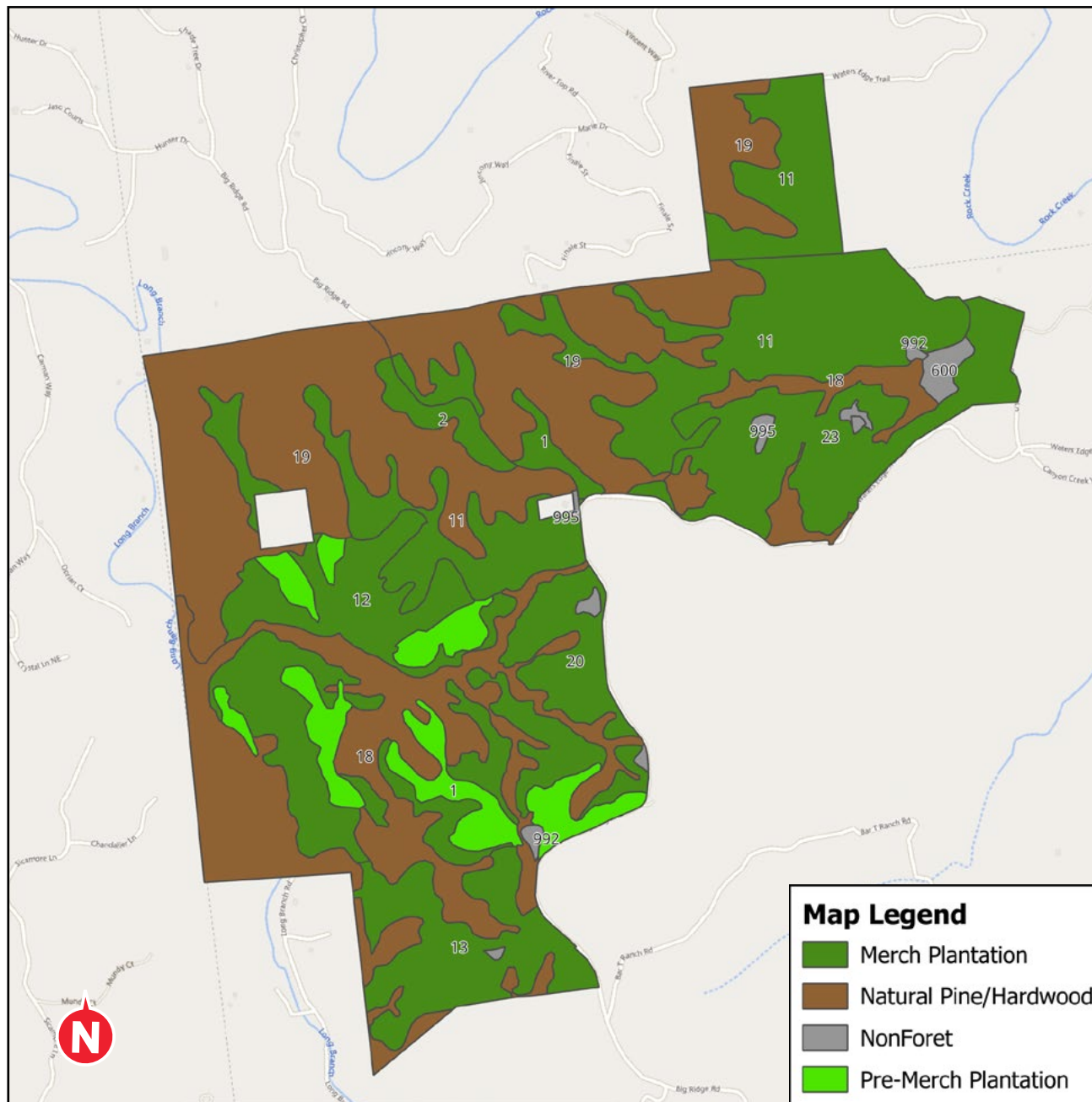
**HEATH MILLIGAN**  
PRINCIPAL  
404.647.4999  
heath@macallanre.com  
1642 Powers Ferry Road SE, Suite 250  
Marietta, Georgia 30067



**MACALLAN**  
REAL ESTATE

**HEATH MILLIGAN**  
PRINCIPAL

404.647.4999  
heath@macallanre.com  
1642 Powers Ferry Road SE, Suite 250  
Marietta, Georgia 30067



**MACALLAN**  
REAL ESTATE

**HEATH MILLIGAN**  
PRINCIPAL

404.647.4999  
heath@macallanre.com  
1642 Powers Ferry Road SE, Suite 250  
Marietta, Georgia 30067

# HIGHTOWER TRACT

PICKENS COUNTY, GA

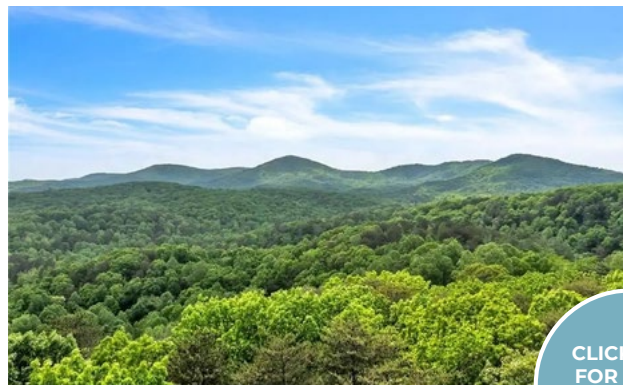
708.5 +/- ACRES | TIMBER/RECREATIONAL LAND



## AREA OVERVIEW | JASPER

Nicknamed “The First Mountain City,” Jasper was founded in 1853 and serves as the largest city and county seat of Pickens County. It’s known as the marble capital of Georgia due to the large amount of natural marble deposits in the area. In addition to the many other festivals and events around the town, Jasper’s annual Marble Festival attracts visitors from all over the United States. The charming downtown features multiple shops, breweries, and dining options.

Just 50 miles north of Atlanta, Jasper’s allure has fueled steady residential growth in recent years. Jasper is intersected by Highway 515 and has attracted many national retailers to its highway corridor.



[CLICK HERE FOR MORE ON JASPER, GEORGIA](#)



**MACALLAN**  
REAL ESTATE

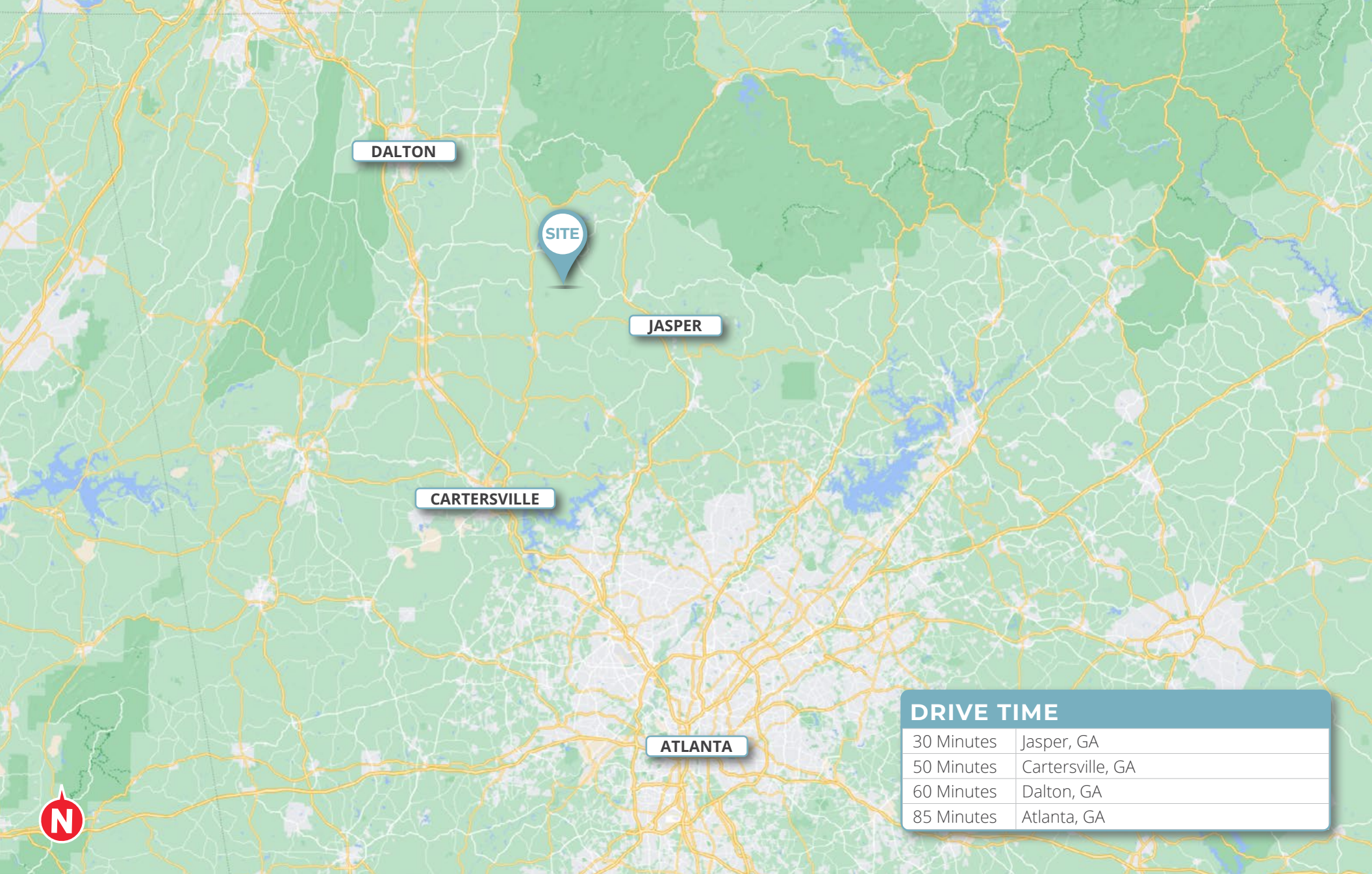
**HEATH MILLIGAN**  
PRINCIPAL

404.647.4999

heath@macallanre.com

1642 Powers Ferry Road SE, Suite 250  
Marietta, Georgia 30067





DALTON

SITE

JASPER

CARTERSVILLE

ATLANTA

DRIVE TIME	
30 Minutes	Jasper, GA
50 Minutes	Cartersville, GA
60 Minutes	Dalton, GA
85 Minutes	Atlanta, GA



MACALLAN  
REAL ESTATE

**HEATH MILLIGAN**  
PRINCIPAL

404.647.4999  
heath@macallanre.com  
1642 Powers Ferry Road SE, Suite 250  
Marietta, Georgia 30067

# HIGHTOWER TRACT

PICKENS COUNTY, GA

708.5 +/- ACRES | TIMBER/RECREATIONAL LAND



MACALLAN  
REAL ESTATE

**HEATH MILLIGAN**  
PRINCIPAL

404.647.4999

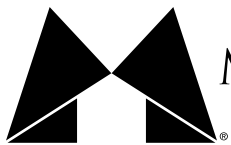
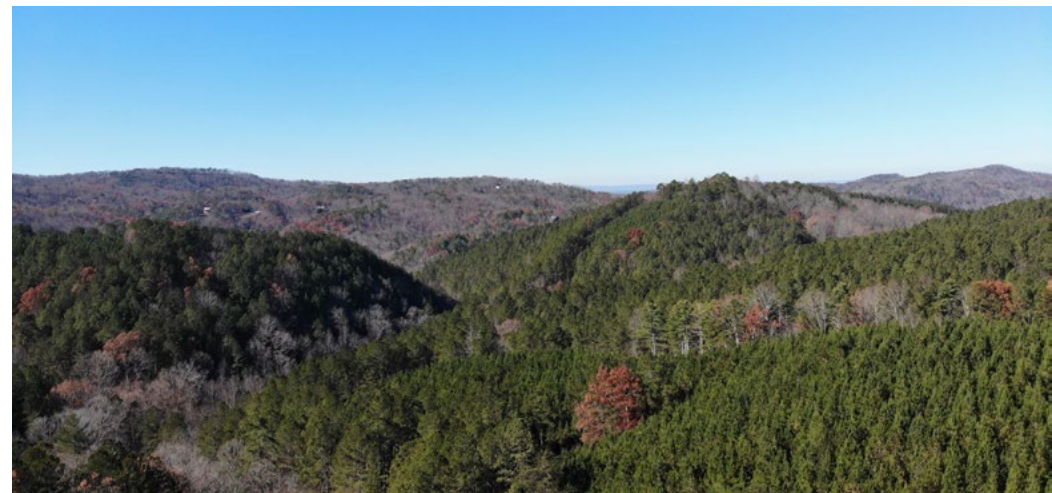
heath@macallanre.com

1642 Powers Ferry Road SE, Suite 250  
Marietta, Georgia 30067

# HIGHTOWER TRACT

PICKENS COUNTY, GA

708.5 +/- ACRES | TIMBER/RECREATIONAL LAND



MACALLAN  
REAL ESTATE

**HEATH MILLIGAN**  
PRINCIPAL

404.647.4999

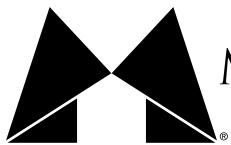
heath@macallanre.com

1642 Powers Ferry Road SE, Suite 250  
Marietta, Georgia 30067

# HIGHTOWER TRACT

PICKENS COUNTY, GA

708.5 +/- ACRES | TIMBER/RECREATIONAL LAND



MACALLAN  
REAL ESTATE

**HEATH MILLIGAN**  
PRINCIPAL

404.647.4999

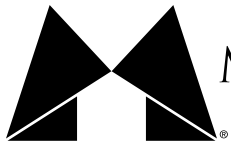
heath@macallanre.com

1642 Powers Ferry Road SE, Suite 250  
Marietta, Georgia 30067

# HIGHTOWER TRACT

PICKENS COUNTY, GA

708.5 +/- ACRES | TIMBER/RECREATIONAL LAND



MACALLAN  
REAL ESTATE

**HEATH MILLIGAN**  
PRINCIPAL

404.647.4999

heath@macallanre.com

1642 Powers Ferry Road SE, Suite 250  
Marietta, Georgia 30067