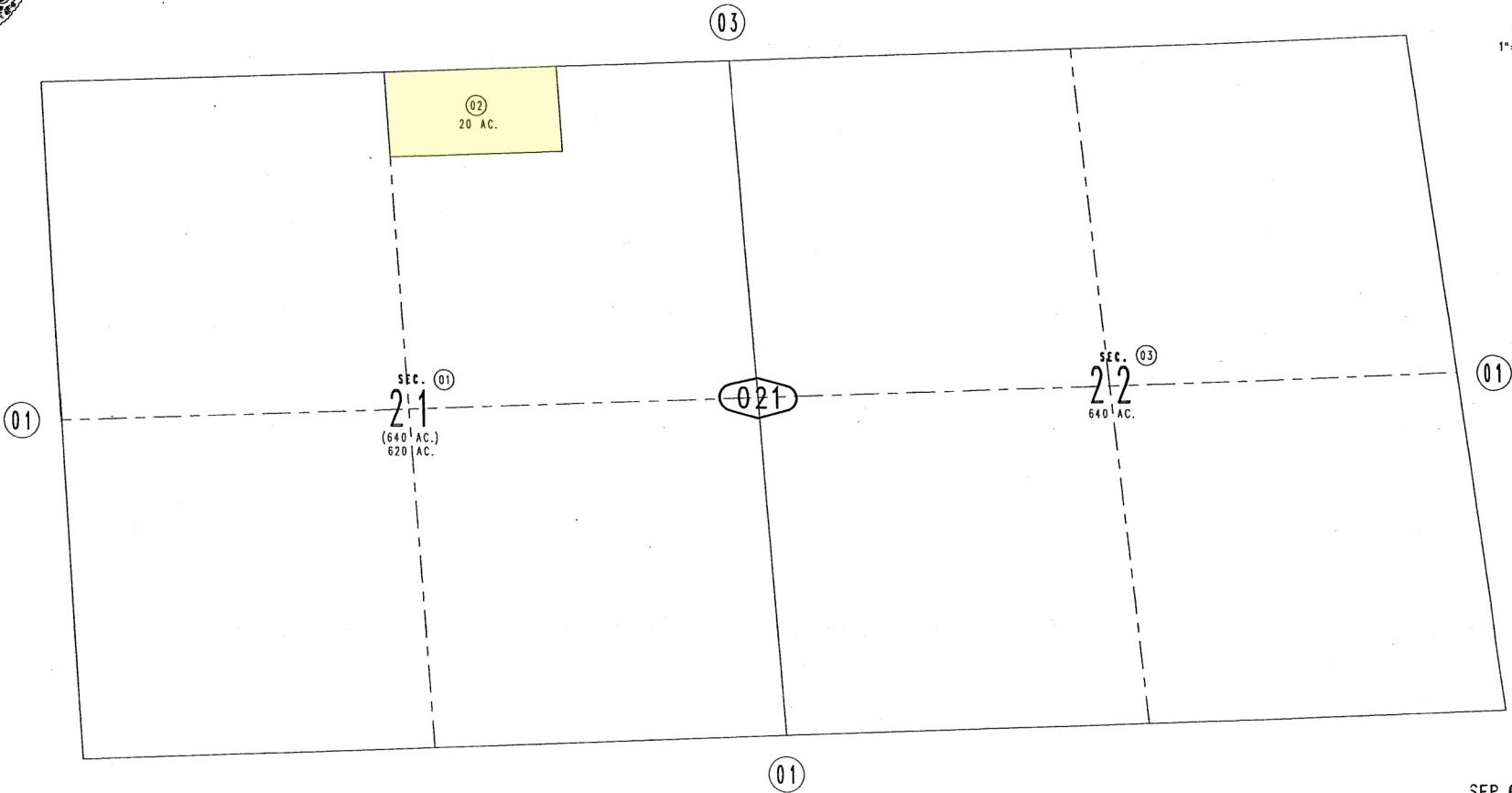
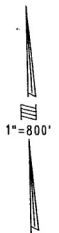


THIS MAP IS FOR THE PURPOSE
OF AD VALOREM TAXATION ONLY.

Sec.21&22, T.2N.,R.17E., S.B.B.&M.

Needles Unified
Tax Rate Area
96000

0645-02



June 2005

SEP 07 2005

Assessor's Map
Book 0645 Page 02
San Bernardino County

REVISED