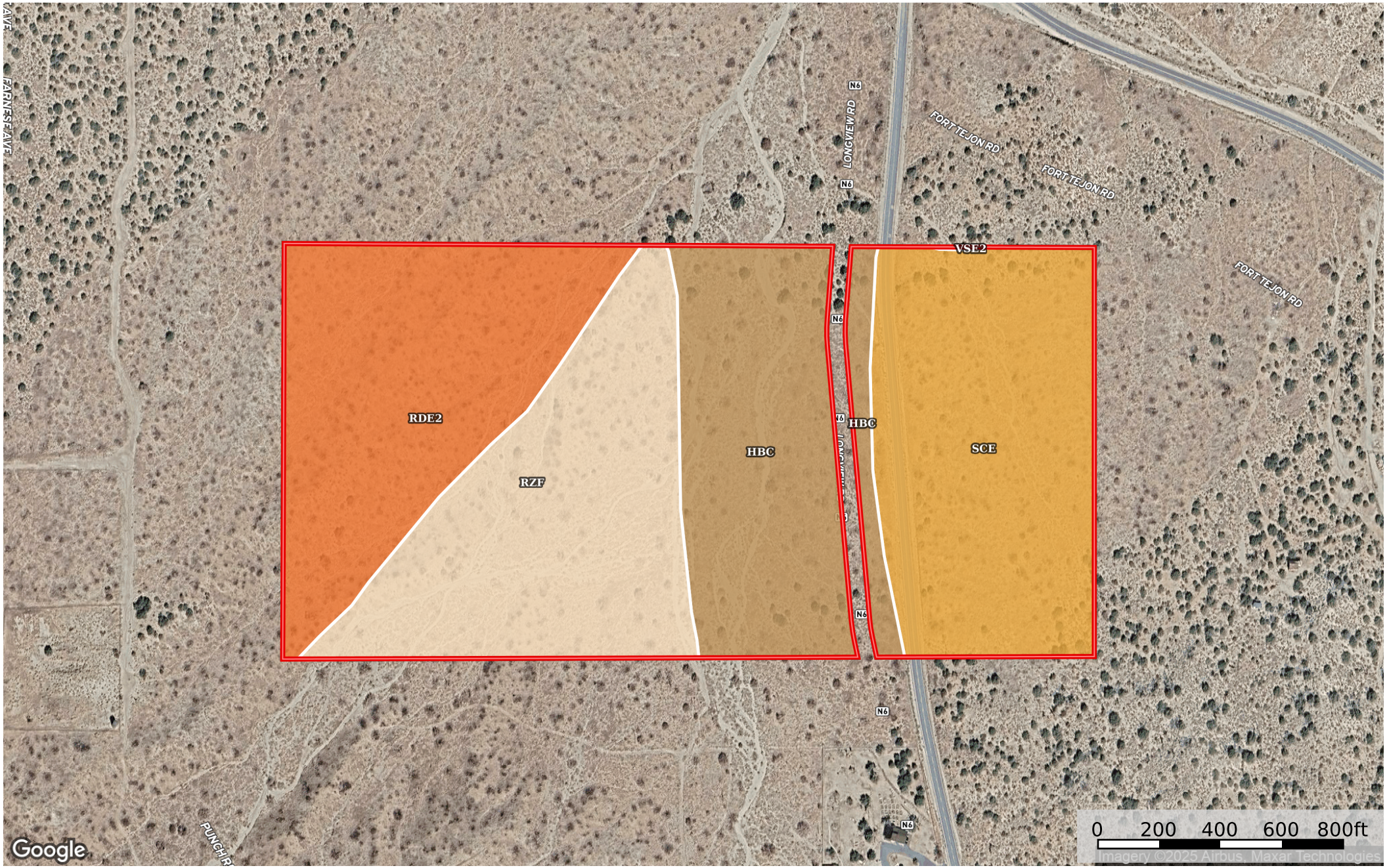
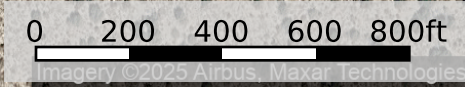


81.11 Acres Juniper Hills, Los Angeles County, CA 3060-

Los Angeles County, California, 81.11 AC +/-



 Boundary



|  All Polygons 79.39 ac

SOIL CODE	SOIL DESCRIPTION	ACRES	%	CPI	NCCPI	CAP
ScE	Saugus loam, 15 to 30 percent slopes	21.39	26.95	0	33	6e
RzF	Rough broken land	20.26	25.52	0	-	8
RdE2	Ramona sandy loam, 9 to 30 percent slopes, eroded	19.81	24.96	0	16	6e
HbC	Hanford coarse sandy loam, 2 to 9 percent slopes	17.9	22.55	0	18	4e
VsE2	Vista coarse sandy loam, 15 to 30 percent slopes, eroded	0.03	0.04	0	17	6e
TOTALS		79.39(*)	100%	-	16.95	6.06

(*) Total acres may differ in the second decimal compared to the sum of each acreage soil. This is due to a round error because we only show the acres of each soil with two decimal.

|  Boundary 55.72 ac

SOIL CODE	SOIL DESCRIPTION	ACRES	%	CPI	NCCPI	CAP
RzF	Rough broken land	20.26	36.36	0	-	8
RdE2	Ramona sandy loam, 9 to 30 percent slopes, eroded	19.81	35.55	0	16	6e
HbC	Hanford coarse sandy loam, 2 to 9 percent slopes	15.65	28.09	0	18	4e
TOTALS		55.72(*)	100%	-	10.74	6.17

(*) Total acres may differ in the second decimal compared to the sum of each acreage soil. This is due to a round error because we only show the acres of each soil with two decimal.

|  Boundary 23.67 ac

SOIL CODE	SOIL DESCRIPTION	ACRES	%	CPI	NCCPI	CAP
ScE	Saugus loam, 15 to 30 percent slopes	21.39	90.41	0	33	6e
HbC	Hanford coarse sandy loam, 2 to 9 percent slopes	2.25	9.51	0	18	4e
VsE2	Vista coarse sandy loam, 15 to 30 percent slopes, eroded	0.03	0.13	0	17	6e
TOTALS		23.67(*)	100%	-	31.57	5.81









(*) Total acres may differ in the second decimal compared to the sum of each acreage soil. This is due to a round error because we only show the acres of each soil with two decimal.

Capability Legend

Increased Limitations and Hazards

Decreased Adaptability and Freedom of Choice Users

Land, Capability

								
	1	2	3	4	5	6	7	8
'Wild Life'	•	•	•	•	•	•	•	•
Forestry	•	•	•	•	•	•	•	
Limited	•	•	•	•	•	•	•	
Moderate	•	•	•	•	•	•		
Intense	•	•	•	•	•			
Limited	•	•	•	•				
Moderate	•	•	•					
Intense	•	•						
Very Intense	•							

Grazing Cultivation

(c) climatic limitations (e) susceptibility to erosion

(s) soil limitations within the rooting zone (w) excess of water