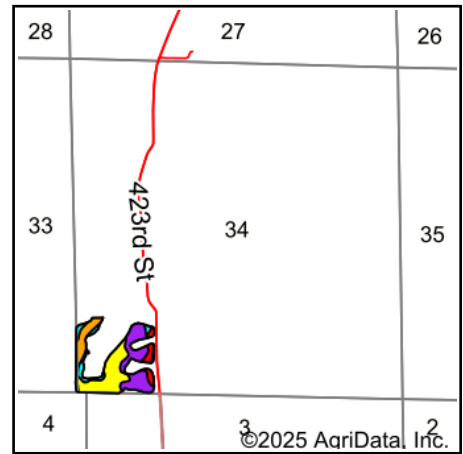
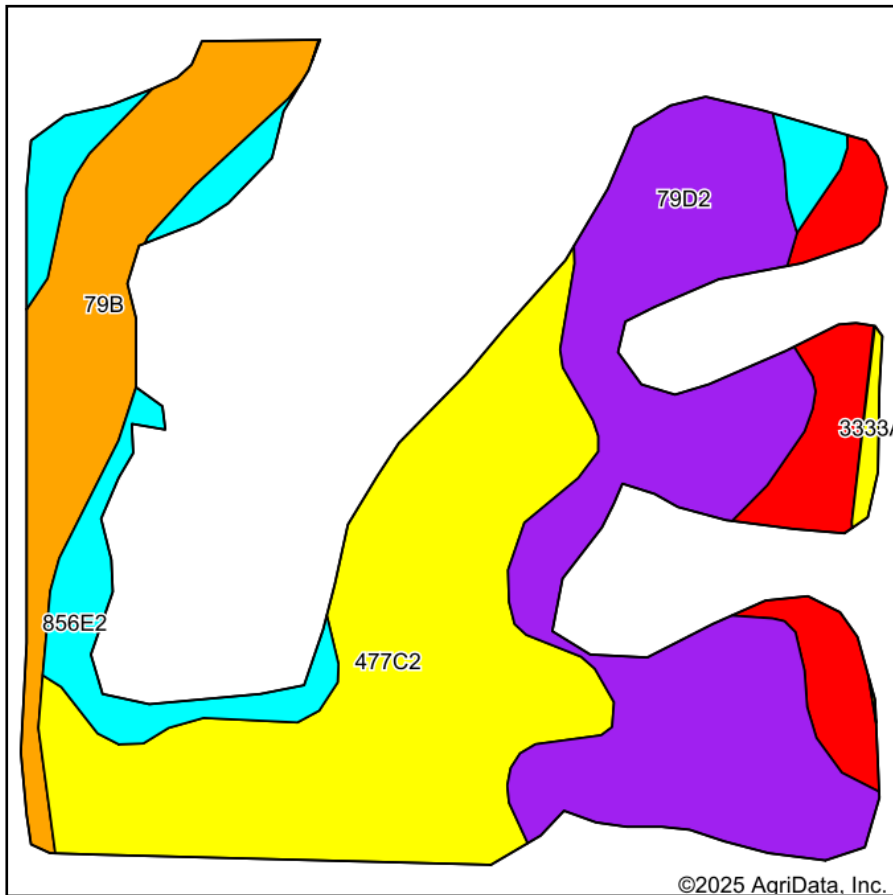


Soils Map



State: **Illinois**
 County: **Pike**
 Location: **34-7S-3W**
 Township: **Spring Creek**
 Acres: **20.46**
 Date: **1/23/2025**



Maps Provided By:



Soils data provided by USDA and NRCS.

Area Symbol: IL149, Soil Area Version: 19

Code	Soil Description	Acres	Percent of field	Il. State Productivity Index Legend	Subsoil rooting ^a	Corn Bu/A	Soybeans Bu/A	Wheat Bu/A	Oats Bu/A ^b	Sorghum ^c Bu/A	Grass-le gume ^e hay, T/A	Crop productivity index for optimum management	*n NCCPI Soybeans
**477C2	Winfield silt loam, 5 to 10 percent slopes, eroded	7.18	35.1%		FAV	**151	**47	**59	0	**114	**4.70	**111	70
**79D2	Menfro silt loam, 10 to 18 percent slopes, eroded	6.55	32.0%		FAV	**144	**44	**55	0	**106	**4.30	**104	61
**79B	Menfro silt loam, 2 to 5 percent slopes	3.00	14.7%		FAV	**163	**50	**62	0	**121	**4.90	**119	77
**856E2	Stookey and Timula soils, 18 to 25 percent slopes, eroded	1.93	9.4%		FAV	**120	**38	**45	**28	**45	**3.00	**87	45
**3475A	Elsah gravelly loam, 0 to 2 percent slopes, frequently flooded	1.65	8.1%		FAV	**130	**43	**50	**60	0	**3.60	**97	32

Soils data provided by USDA and NRCS. Soils data provided by University of Illinois at Champaign-Urbana.



Code	Soil Description	Acres	Percent of field	Il. State Productivity Index Legend	Subsoil rooting a	Corn Bu/A	Soybeans Bu/A	Wheat Bu/A	Oats Bu/A b	Sorghum c Bu/A	Grass-legume e hay, T/A	Crop productivity index for optimum management	*n NCCPI Soybeans
**3333A	Wakeland silt loam, 0 to 2 percent slopes, frequently flooded	0.15	0.7%		FAV	**157	**50	**61	**77	0	**4.60	**115	73
Weighted Average						145.9	45.3	56.1	8	95.9	4.4	106.6	*n 62.7

Table: Optimum Crop Productivity Ratings for Illinois Soil EFOTG are sourced from Bulletin 811 calculated Map Unit Base Yield Indices, and adjusted (Adj) for slope, erosion, flooding, and surface texture. Publication Date: 02-08-2023

Crop yields and productivity (B811 EFOTG) are maintained at the following USDA web site: 2023 Illinois Soil Productivity and Yield Indices: <https://efotg.sc.egov.usda.gov/#/state/IL/documents/section=2&folder=52809>

** Base indexes from Bulletin 811 adjusted for slope, erosion, flooding, and surface texture according to the Il. Soils EFOTG

b Soils in the southern region were not rated for oats and are shown with a zero "0".

c Soils in the northern region or in both regions were not rated for grain sorghum and are shown with a zero "0".

e Soils in the well drained group were not rated for grass-legume and are shown with a zero "0".

*n: The aggregation method is "Weighted Average using all components"