

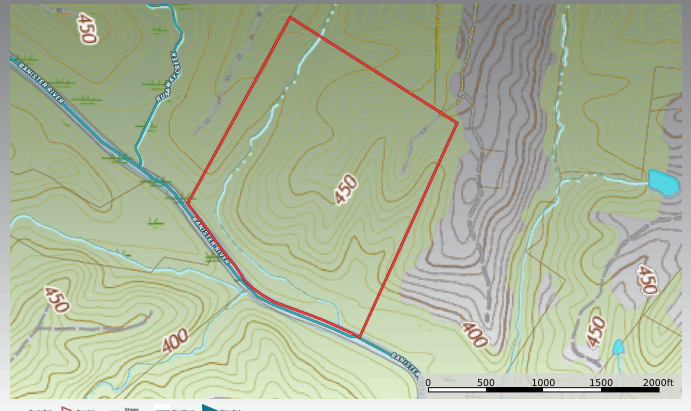
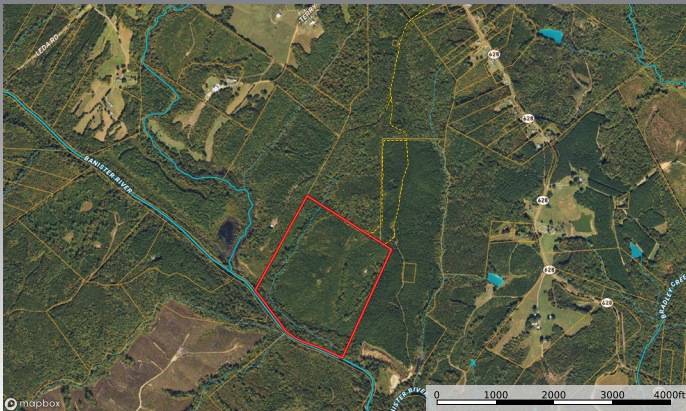
TRACT 2- OFF CHESTNUT RD

GPS- Entrance to right of way at 4185 Chestnut Rd, Nathalie, VA

94 Acre growing timber tract with long river frontage along the Bannister River.

Streams, lays well to varied topography. Mixture of planted pine and hardwoods.

Great potential for private estate on River or recreational development.



PROPERTY INFORMATION

ADDRESS: TRACT 2

GPS: 4185 CHESTNUT RD

COUNTY:

HALIFAX COUNTY

SITE SIZE:

94 ACRES

PARCELS:

20132

ZONING:

AG

CURRENT USE:

GROWING TIMBER

UTILITIES:

N/A

TOPOGRAPHY:

GENTLY SLOPED

FEATURES:

BACK FRONTAGE ALONG BANNISTER

TAX ASSESSMENT:

RIVER

\$112,800