

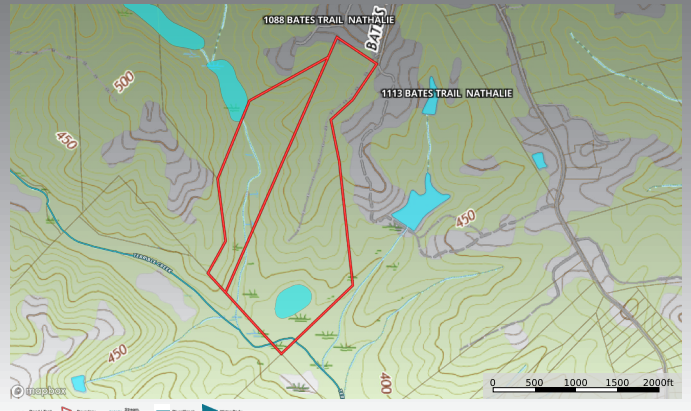
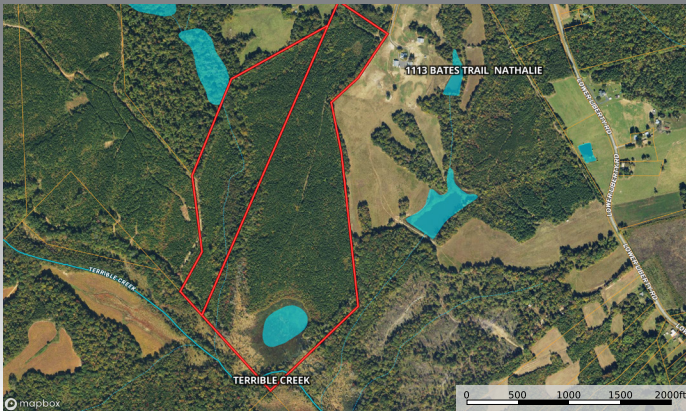
TRACT 3- OFF BATES TRAIL

GPS- Entrance to right of way next to 1088 Bates Trail, Nathalie, VA

92 Acres in two parcels.

Tract 3- 62.50 Acres (parcel 20139) and 29.63 Acres (parcel 20140)

Trails, creeks and Terrible Creek frontage on corner of property. Growing timber tract surrounded by beautiful farms off BatesTrail Rd.



PROPERTY INFORMATION

ADDRESS: TRACT 3

GPS: 1113 BATE'S TRAIL RD

COUNTY:

HALIFAX COUNTY

SITE SIZE:

92 ACRES

PARCELS:

20139 & 20140

ZONING:

AG

CURRENT USE:

GROWING TIMBER

UTILITIES:

N/A

TOPOGRAPHY:

GENTLY SLOPED

FEATURES:

FRONTAGE ALONG TERRIBLE CREEK

TAX ASSESSMENT:

\$131,182