



# 83 ACRES ON SNYDER ROAD SEBRING

Snyder Rd, Sebring, FL 33870

R. Todd Dantzler, CCIM  
863.287.3586  
todd@saundersrealestate.com



## PROPERTY OVERVIEW



**Sale Price**

**\$1,670,200**

### PROPERTY OVERVIEW

Escape the hustle and congestion of everyday life to your own 84-acre retreat in Sebring, Florida. Once a thriving citrus farm, this expansive property offers a peaceful getaway with endless possibilities. Whether you're looking for a homestead, an agricultural investment, or a recreational property, this land has the space and potential to bring your vision to life.

Located just minutes from the world-famous Sebring International Raceway, home of the legendary 12 Hours of Sebring endurance race, this property is an ideal retreat for motorsports enthusiasts and nature lovers alike. With its rich agricultural history and prime location, this land is perfect for farming, ranching, or simply relaxing in the tranquility of Florida's countryside. Don't miss this rare opportunity to own a piece of Old Florida charm—call today for more details or to schedule a private tour!

### OFFERING SUMMARY

<b>Acreage:</b>	83 Acres
<b>Price / Acre:</b>	\$20,123
<b>City:</b>	Sebring
<b>County:</b>	Highlands
<b>Property Type:</b>	Land

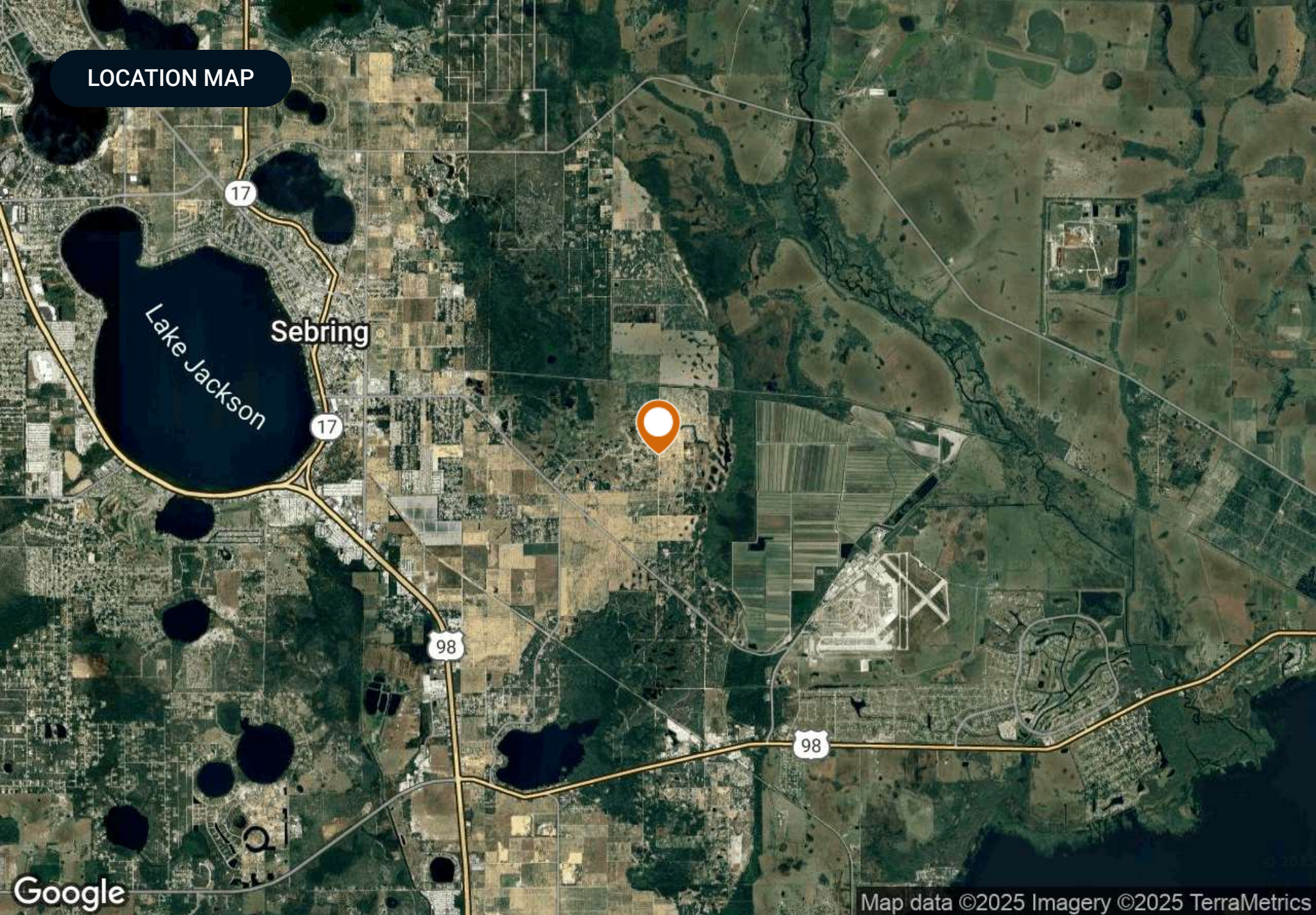
## SPECIFICATIONS & FEATURES



## SPECIFICATIONS & FEATURES

<b>Uplands / Wetlands:</b>	83 acres of uplands
<b>Soil Types:</b>	Tavares- Bollinger- Sanibel Complex Rolling
<b>Taxes &amp; Tax Year:</b>	\$1642 for 2024
<b>Zoning / FLU:</b>	AG
<b>Road Frontage:</b>	Snyder Road
<b>Nearest Point of Interest:</b>	Sebring International Raceway
<b>Current Use:</b>	Citrus

LOCATION MAP



Google

Map data ©2025 Imagery ©2025 TerraMetrics

## LOCATION

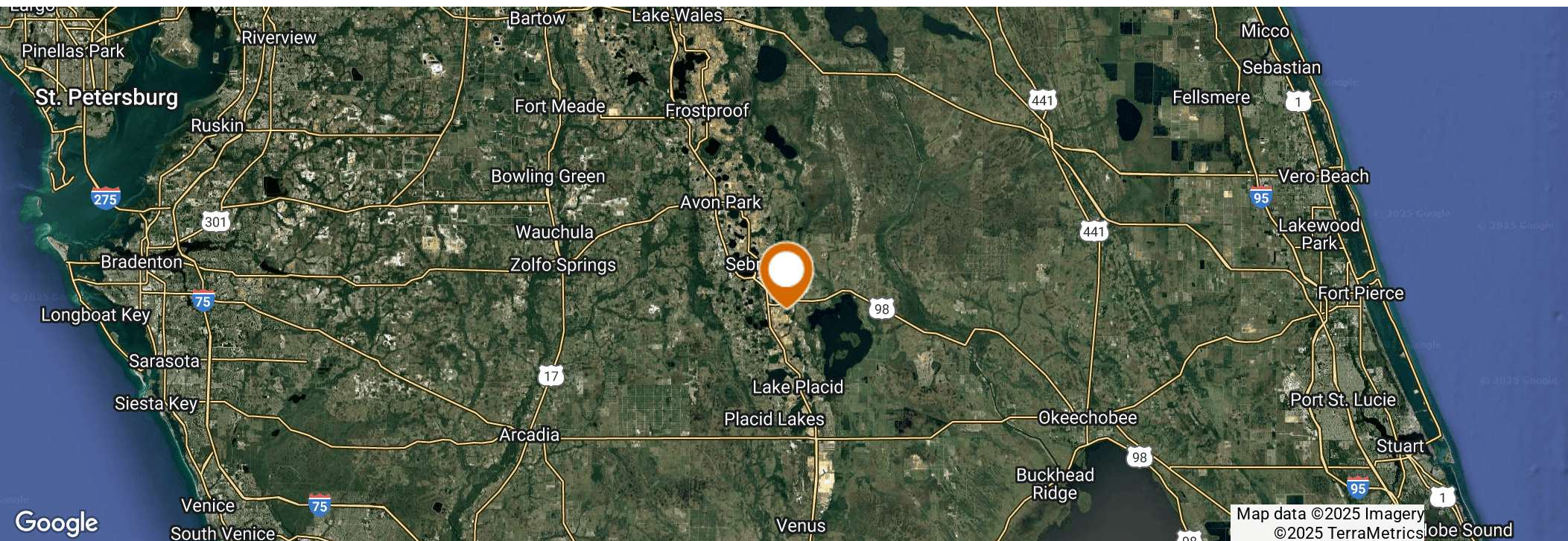


## LOCATION & DRIVING DIRECTIONS

**Parcel:** C-35-34-29-021-0491-0000 C-35-34-29-010-0130-0000 C-35-34-29-021-0492-0000

**GPS:** 27.476443, -81.3844899

- Go east out of downtown Sebring on Kenilworth Blvd to Moon Ranch Road
- Turn left on Moon





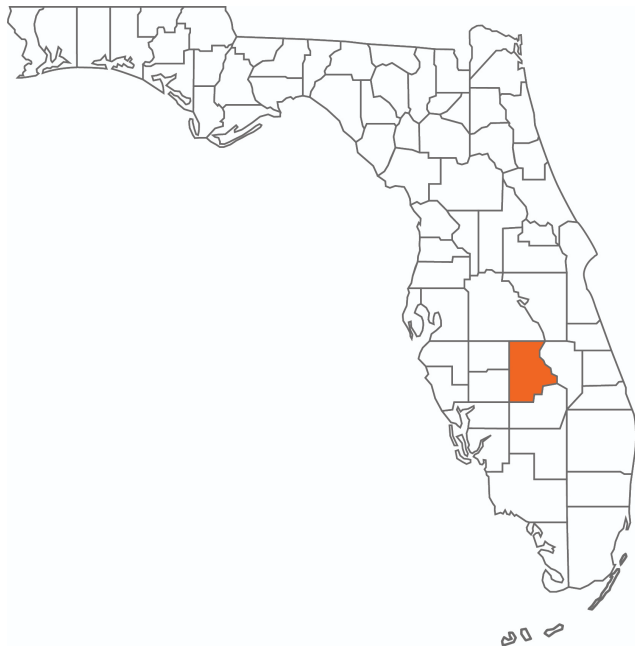
ADDITIONAL PHOTOS



# COUNTY



## HIGHLANDS COUNTY FLORIDA



<b>Founded</b>	1921	<b>Density</b>	103.3 (2019)
<b>County Seat</b>	Sebring	<b>Population</b>	103,502 (2023)
<b>Area</b>	1,028 sq mi	<b>Website</b>	<a href="http://highlandsfl.gov">highlandsfl.gov</a>

Highlands County comprises the Sebring-Avon Park Metropolitan Statistical Area, and its county seat is the city of Sebring. Equidistant to Tampa, Orlando, and South Florida, Highlands County is located within two hours of more than 86% of Florida's population. This location positions the county as a great bedroom community for workers who commute throughout the state. Highlands County is also near three interstates connecting to several commercial airports, an intermodal logistics center, and various deepwater ports. The county is about 1.5 hours from Orlando, Tampa, Fort Myers, and West Palm Beach.

According to DataUSA, the local county economy employs 34,300 people as of 2020. The largest industries are Health Care & Social Assistance (6,071 people), Retail Trade (5,595 people), and Construction (3,356 people). The highest-paying industries are Information (\$82,176), Wholesale Trade (\$53,542), and Public Administration (\$44,274).





For more information visit [www.saundersrealestate.com](http://www.saundersrealestate.com)

#### HEADQUARTERS

1723 Bartow Road  
Lakeland, FL 33801  
863.648.1528

#### ORLANDO

605 E Robinson Street  
Suite 410  
Orlando, FL 32801  
407.516.4300

#### NORTH FLORIDA

356 NW Lake City Avenue  
Lake City, FL 32055  
352.364.0070

#### GEORGIA

203 E Monroe Street  
Thomasville, GA 31792  
229.299.8600

#### ARKANSAS

112 W Center St, Suite 501  
Fayetteville, AR 72701  
479.582.4113

